



PERFORMANCE PARTS for
MILWAUKEE-EIGHT[®] MODELS

MAKING POWER has been our passion for over six decades. During that span bikes have changed, riders changed, and even the tools we use have changed, but our singular focus on making the best of the best has never waned. A flat torque curve still excites us, the rumble of a well-tuned exhaust gives us goosebumps and the satisfaction of buttoning up a freshly built engine continues to make our day. We hope you feel the same exhilaration each time you wick the throttle, enjoy a perfect cam lope at the stop light or power around your buddies' stockers on the highway. Whichever it is, this is why we do what we do and why **PROVEN PERFORMANCE**[®] has been and will always be our promise.



GNX SLIP-ON MUFFLERS

for 2017–2021 M8 touring models

Features & Benefits:

- 4.5" slip-on with premium fit, finish, sound, and power!
- Show quality chrome or OEM exact match black
- New, unique louvered baffle delivers a rowdier tone
- Clears up to 13.5" shock lengths
- Removable dB reducer
- Made in USA!

Finish	Part #	MSRP
Black	550-0990	\$524.95
Chrome	550-0991	\$589.95

*Qualified manufacturer declared U.S. 50-State legal emissions replacement part on all MY 2017–2021 FL Touring models

NOTE: Does not fit trike models

 WARNING: Cancer and Reproductive Harm – www.P65Warnings.ca.gov



Not recommended for Tri Glide® or other three wheel models including conversion due to ground clearance.

4.5"



Removable dB reducer



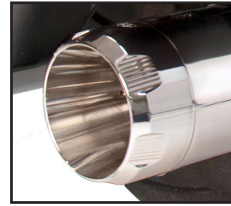
Mk45 TOURING MUFFLERS

Fitment:

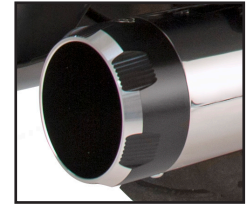
- 2017–2021 M8 touring models
Does not fit Tri Glide® or Freewheeler models

Features & Benefits:

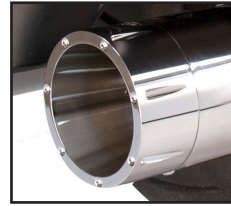
- 4.5" design—with stainless steel baffle and RaceTEX cartridge packing
- Available in show quality chrome or ceramic black finish
- Produces a deep bass rumble throughout the RPM range
- Choose from Thruster or Tracer endcap designs in chrome or black
- Removable dB reducer
- Made in USA!



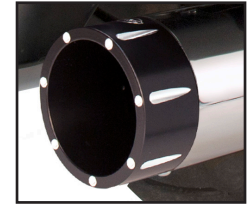
550-0665



550-0664



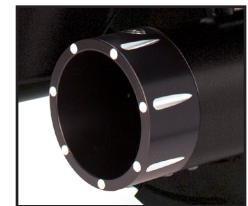
550-0669



550-0668



550-0666



550-0670

NOTES: Not recommended for Tri Glide® or other three wheel models including conversion due to ground clearance.

MK45 4.5" SLIP-ON MUFFLERS

Muffler Body Finish	End Cap Finish & Style	Part #	MSRP
Chrome	Chrome Thruster	550-0665	\$699.95
	Black Highlight Machined Thruster	550-0664	\$699.95
	Chrome Tracer	550-0669	\$699.95
	Black Highlight Machined Tracer	550-0668	\$699.95
Black	Black Highlight Machined Thruster	550-0666	\$739.95
	Black Highlight Machined Tracer	550-0670	\$739.95

*Qualified manufacturer declared U.S. 50-State legal emissions replacement part on all MY 2017-2021 FL Touring models

WARNING: Cancer and Reproductive Harm – www.P65Warnings.ca.gov



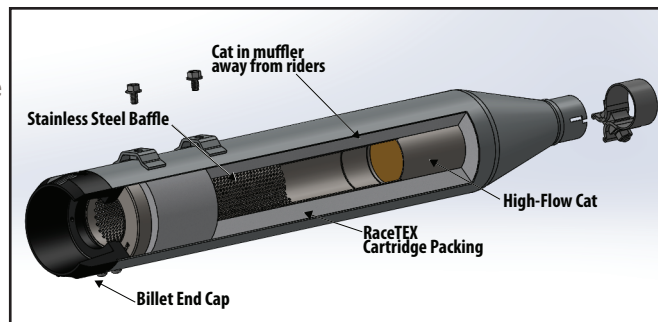
Removable dB reducer

EL DORADO TOURING EXHAUST SYSTEM

Mk45 MUFFLER/HEADER PACKAGE

Features & Benefits:

- Improved power & torque for greater rideability
- Produces a deep bass rumble throughout the RPM range
- Available in show quality chrome or ceramic
- 4.5" mufflers with billet end caps
- Black Highlight Machined Thruster and Tracer, as well as Chrome Tracer tip options
- Includes adapters that allow use of wide band or stock O2 sensors
- Stainless steel header construction
- High flow cats increase exhaust flow for optimum torque
- Relocation of cats to mufflers reduces rider heat
- Made in the USA!



EL DORADO TOURING EXHAUST SYSTEM FOR 2017-'19 TOURING MODELS — STREET LEGAL PERFORMANCE CAT

Finish	End Cap	Part #	MSRP
Chrome	Black Highlight Machined Thruster	550-0699B	\$1,349.95
Black	Black Highlight Machined Thruster	550-0700B	\$1,449.95
Chrome	Black Highlight Machined Tracer	550-0701B	\$1,349.95
Black	Black Highlight Machined Tracer	550-0702B	\$1,449.95
Chrome	Chrome Tracer	550-0851	\$1,349.95

*NOTE: Does not fit trike models

Exempt from emissions tampering regulations under CARB EO# K-010-10 for all 2017-2019 FL Touring Models

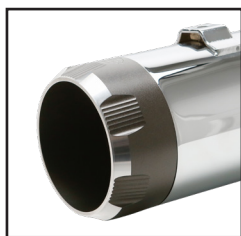
⚠️ WARNING: Cancer and Reproductive Harm – www.P65Warnings.ca.gov



Black w/Tracer



Black w/Thruster



Chrome w/Thruster



Chrome w/Tracer



Chrome w/
Chrome Tracer



Not recommended for Tri Glide® or other three wheel models including conversion due to ground clearance.



GRAND NATIONAL® 4" SLIP-ON MUFFLERS

Fitment:

- 2017–2021 FLH touring models
- 2009–2021 trike models

Features & Benefits:

- Show quality chrome or ceramic black finish
- Aggressive sound and excellent horsepower
- Race inspired Grand National end cap
- High flow baffle design
- Removable dB reducer
- Excellent choice for trike models (See chart)
- Made in USA!



GRAND NATIONAL® 4" MUFFLERS FOR 2017–2021 TOURING M8 ENGINES*

Finish	Part #	MSRP
Chrome	550-0693	\$499.95
Black	550-0694	\$539.95

GRAND NATIONAL® 4" MUFFLERS TOURING MUFFLERS FOR 2017–2021 TRIKE MODELS††

Chrome	550-0689	\$499.95
Black	550-0690	\$539.95

*Qualified manufacturer declared U.S. 50-State legal emissions replacement part on all MY 2017–2021 FL Touring models

††DISCLAIMER: NOT LEGAL FOR SALE OR USE IN CALIFORNIA ON ANY POLLUTION CONTROLLED MOTOR VEHICLES. Not legal for sale or use on EPA pollution controlled motorcycles originally equipped with mufflers containing catalyst.*Qualified Manufacturer Declared Emissions Replacement Part on 2017 to 2020 Touring Trike Models Only.

⚠ WARNING: Cancer and Reproductive Harm — www.P65Warnings.ca.gov



Removable dB reducer

SLASH CUT 4" SLIP-ON MUFFLERS

Fitment:

- 2017–2021 FLH touring models
- 2009–2021 trike models

Features & Benefits:

- Classic slash cut styling
- Aggressive sound
- Available in show chrome or ceramic black finish
- Stripped down styling
- Economical price
- Removable dB reducer included
- Excellent choice for trike models (See chart)
- Made in USA!



SLASH CUT 4" TOURING MUFFLERS FOR 2017–2021 TOURING M8 ENGINES*

Finish	Part #	MSRP
Chrome	550-0695	\$459.95
Black	550-0696	\$499.95

SLASH CUT 4" TOURING MUFFLERS FOR 2017–2021 TRIKE MODELS**

Chrome	550-0691	\$459.95
Black	550-0692	\$499.95

*Qualified manufacturer declared U.S. 50-State legal emissions replacement part on all MY 2017-2021 FL Touring models

**DISCLAIMER: NOT LEGAL FOR SALE OR USE IN CALIFORNIA ON ANY POLLUTION CONTROLLED MOTOR VEHICLES. Not legal for sale or use on EPA pollution controlled motorcycles originally equipped with mufflers containing catalyst.*Qualified Manufacturer Declared Emissions Replacement Part on 2017 to 2020 Touring Trike Models Only.

⚠️ WARNING: Cancer and Reproductive Harm – www.P65Warnings.ca.gov



Removable dB reducer



SIDEWINDER® 2:1 EXHAUST SYSTEM

CARB compliant
CARB EO K-010-14

Fitment

- 2017–2021 M8 FL models

Features & Benefits

- 2:1 styling for high-performance baggers
- Stainless steel stepped header
- Increased power and torque
- Available in show chrome or ceramic black finish
- Machined aluminum end cap
- Includes adapters that allow use of wide band or stock O2 sensors
- Deep 2:1 performance exhaust note
- Removable dB reducer
- Made in USA!



See next page for Left Side Shadow Pipe

Not recommended for Tri Glide® or other three wheel models including conversion due to ground clearance.

SIDEWINDER 2:1 EXHAUST SYSTEM FOR 2017–'20 M8 TOURING MODELS — STREET LEGAL[†] PERFORMANCE CAT

Finish	Part #	MSRP
Chrome	550-0758C	\$1,249.95
Black	550-0759C	\$1,099.95

SIDEWINDER 2:1 EXHAUST SYSTEM FOR 2017–2021 M8 TOURING MODELS — RACE ONLY^{**}

Chrome	550-0728	\$1,099.95
Black	550-0729	\$999.95

[†]Exempt from emissions tampering regulations under CARB EO# K-010-14 for all 2017-2020 FL Touring Models

^{**}DISCLAIMER: NOT LEGAL FOR SALE OR USE IN CALIFORNIA ON ANY POLLUTION CONTROLLED MOTOR VEHICLE. NOT LEGAL FOR SALE OR USE NATIONWIDE ON ANY FEDERAL POLLUTION CONTROLLED MOTOR VEHICLE UNDER THE CLEAN AIR ACT

 WARNING: Cancer and Reproductive Harm – www.P65Warnings.ca.gov



Removable dB reducer—race only version

SHADOW PIPE

for 2017–2021 touring models with S&S Sidewinder® 2:1 exhaust

Features & Benefits:

- Available in show chrome and ceramic black finish
- Shadow muffler fills left side cutout in extended bags when running Sidewinder 2:1
- Matching end cap for left side is a mirror image of right side Sidewinder 2:1 Cap (not available on any of our slip-on or El Dorado Products)
- 4.5" design
- All hardware included



Not recommended for Tri Glide® or other three wheel models including conversion due to ground clearance.

2017–2021 TOURING MODELS EQUIPPED WITH S&S® SIDEWINDER® 2:1 EXHAUST

MSRP

Chrome	550-0829	\$399.95
Black	550-0831	\$399.95

If you have...			...you'll need
BIKE	FINISH	SIDEWINDER PART #	SHADOW PIPE PART #
2017–2021 touring model	Chrome	550-0728	550-0829
		550-0758C	
	Black	550-0729	550-0831
		550-0759C	



SUPERSTREET 2:1 EXHAUST SYSTEM



Fitment:

- 2018–2021 HD® Street Bob®, Low Rider®, Softail Slim®, Fat Bob®, Deluxe, Sport Glide®, & Heritage® models
- 2018–2021 HD® Softail® Fat Boy®, Breakout®, & FXDR® models

Features & Benefits:

- Classic 2:1 styling with world famous S&S performance!
- Fits floorboard and forward controls and fits mid mounts with S&S brake pedal kit (560-0259A)
- Saddlebag support compatible! Works with OEM and similar size saddlebags (like Heritage® or Sport Glide® models)
- Full heat shields on both front and rear headers
- Stainless steel stepped header construction
- Available in show quality chrome or ceramic finish
- **>> and now Stainless Steel Muffler & Shields**
- Oxygen sensor ports allow use of wide band or stock O2 sensors
- Passenger peg bracket included (Fat Boy, FXDR, & Breakout version. All others use OE Heritage location)
- Made in the USA!



Mid mounts require brake pedal kit (part # 560-0259A/msrp \$162.95)

SUPERSTREET 2:1 EXHAUST SYSTEM — STREET LEGAL* PERFORMANCE CAT

Fitment	Finish	Part #	MSRP
2018–2020 HD® Street Bob®, Low Rider®, Softail Slim®, Fat Bob®, Deluxe, Sport Glide® & Heritage® models®	NEW >> Stainless Steel with Black end cap	550-0996B	\$1,349.95
	Black with Black end cap	550-0789B	\$999.95
	Chrome with Black end cap	550-0791B	\$1,349.95
2018–2020 HD® Softail® Fat Boy®, Breakout® & FXDR® models	Black with Black end cap	550-0846B	\$1,074.95
	Chrome with Black end cap	550-0847B	\$1,299.95

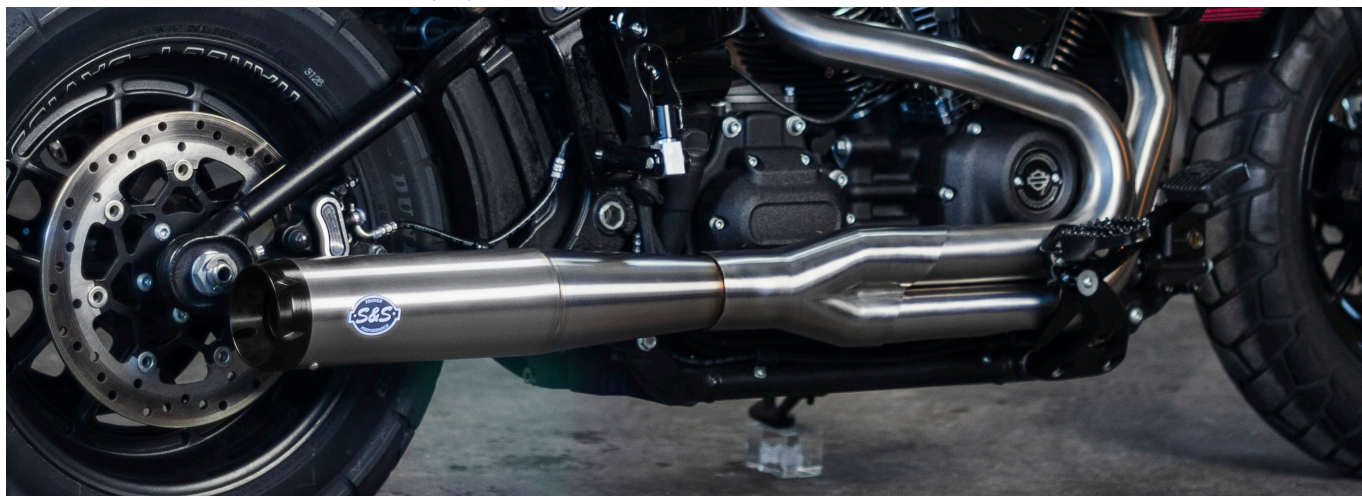
SUPERSTREET 2:1 EXHAUST SYSTEM — RACE ONLY†

2018–2021 HD Street Bob, Low Rider, Softail Slim, Fat Bob, Deluxe, Sport Glide & Heritage models	Black with Black end cap	550-0788	\$899.95
	Chrome with Black end cap	550-0790	\$999.95
2018–2021 HD Softail Fat Boy, Breakout & FXDR models	Black with Black end cap	550-0857	\$974.95
	Chrome with Black end cap	550-0858	\$1,074.95

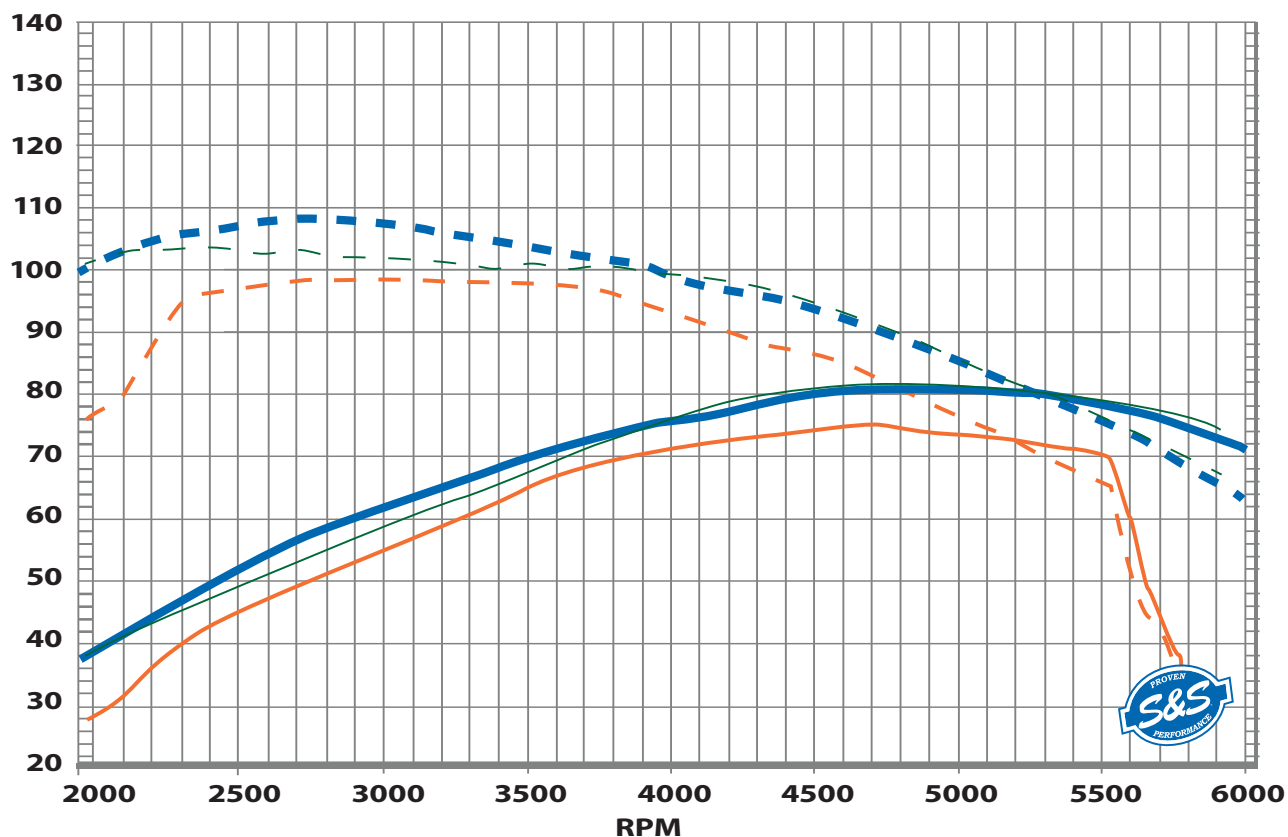
*Exempt from emissions tampering regulations under CARB EO# K-010-13 for all 2018–2020 Softail models

†DISCLAIMER: FOR CLOSED COURSE COMPETITION USE ONLY. NOT INTENDED FOR STREET USE. LEGAL IN CALIFORNIA ONLY FOR RACING VEHICLES WHICH MAY NEVER BE USED, OR REGISTERED OR LICENSED FOR USE, UPON A HIGHWAY. NOT LEGAL FOR SALE OR USE NATIONWIDE ON ANY FEDERAL POLLUTION CONTROLLED MOTOR VEHICLE UNDER THE CLEAN AIR ACT.

⚠ WARNING: Cancer and Reproductive Harm – www.P65Warnings.ca.gov



PROVEN PERFORMANCE



Performance exhaust and street legal used to be mutually exclusive features, forcing a rider to choose between making power and making sure factory warranties stayed intact. Not anymore! Welcome to the new world order of high performance that marries a real deal v-twin exhaust note with legit horsepower gains.

Orange is a stock 114" Softail (75 hp & 99 torque)

Green is the same bike with one of the stubby and empty systems on the market (82 hp & 104 torque)

Blue is the S&S SuperStreet (82 hp & 109 torque). This 2:1 system is not only Street Legal, but produces more torque in the RPM zone that you ride in!

Stock 114" Softail® Model

Max Power = 75.15

Max Torque = 99.61

Other guys short stainless steel 2:1 "Race Only," with Stealth Air Cleaner

Max Power = 82.86

Max Torque = 104.44

S&S SuperStreet 2:1 Street Legal with S&S high flow catalyst & Stealth Air Cleaner

Max Power = 82.36

Max Torque = 109.44



GRAND NATIONAL® 2:2 EXHAUST SYSTEM

for 2018–2021 HD® Street Bob®, Low Rider®, Slim®, Fat Bob®, & Deluxe models

Features & Benefits:

- 2:2 Free-flow design equals solid HP gains
- Hidden crossover provides performance benefits of 2:1
- Full heat shields on both front and rear headers
- Stainless steel stepped header construction
- Available in chrome or ceramic black finish
- Oxygen sensor ports allow use of wide band or stock O2 sensors.
- Removable dB reducer included (*Race only version*)
- Fits floorboard and forward controls and fits mid mounts with S&S brake pedal kit (*part #560-0259A for \$162.95*)
- Right side passenger peg relocation bracket (*part #550-0801 for \$69.95*)
- Made in USA!



GRAND NATIONAL® 2:2 EXHAUST SYSTEM FOR 2018–'19 HD® STREET BOB®, LOW RIDER, SLIM, FAT BOB, & DELUXE MODELS — STREET LEGAL* PERFORMANCE CAT


Chrome	550-0816A	\$999.95	
Black	550-0815A	\$999.95	

GRAND NATIONAL 2:2 EXHAUST SYSTEM FOR 2018–2021 HD STREET BOB, LOW RIDER, SLIM, FAT BOB, & DELUXE MODELS — RACE ONLY**

Chrome	550-0761	\$999.95
Black	550-0760	\$999.95

*Exempt from emissions tampering regulations under CARB EO# K-010-7 for all 2018–2019 Softtail Models

**DISCLAIMER: NOT LEGAL FOR SALE OR USE IN CALIFORNIA ON ANY POLLUTION CONTROLLED MOTOR VEHICLE. NOT LEGAL FOR SALE OR USE NATIONWIDE ON ANY FEDERAL POLLUTION CONTROLLED MOTOR VEHICLE UNDER THE CLEAN AIR ACT

 WARNING: Cancer and Reproductive Harm — www.P65Warnings.ca.gov



Passenger Peg
Relocation Bracket



Mid mounts require brake pedal kit
(part # 560-0259A/msrp \$162.95)



GRAND NATIONAL® SLIP-ON MUFFLERS

for 2018–2021 HD® Fat Bob® models

Features & Benefits:

- Up to 12% more horsepower and 6% more torque
(when used with Stealth Air Cleaner Kit)
- Race inspired design
- Ceramic black finish
- Deep performance rumble replaces stock whisper tone
- No mapping required
- Removable dB reducer
- Made in USA!



Exhaust

GRAND NATIONAL® SLIP-ON MUFFLERS FOR 2018–2021 HD® FAT BOB® MODELS

Finish	Part #	MSRP
Black	550-0734	\$449.95

*Qualified manufacturer declared U.S. 50-State legal emissions replacement part on all MY 2018–2021 Fat Bob models.

⚠️ WARNING: Cancer and Reproductive Harm – www.P65Warnings.ca.gov



Removable dB reducer



GRAND NATIONAL® SLIP-ON MUFFLERS

Fitment:

- Fits 2018–2021 HD® Softail® Street Bob®, Low Rider®, Slim®, Fat Boy®, Breakout®, Heritage®, & Classic® models (except Fat Bob®, Sport Glide®, & FXDR models)

Features & Benefits:

- Show chrome or ceramic black finish
- All hardware and gaskets included
- Deep performance rumble replaces stock whisper tone
- Removable dB reducer included (*Race only version*)
- Made in USA!



GRAND NATIONAL® MUFFLERS FOR 2018–2020 M8 HD® SOFTAIL® MODELS — STREET LEGAL[†] PERFORMANCE CAT

Fitment	Muffler Body Finish	Part #	MSRP
M8 HD Softail models: Street Bob®, Low Rider®, Slim®, Fat Boy® & Breakout® models	Black	550-0754B	\$634.95
M8 HD Softail models: Street Bob, Low Rider, Slim, Fat Boy & Breakout® models	Chrome	550-0755B	\$649.95
M8 HD Heritage Softail Classic & Softail Deluxe models	Chrome	550-0757B	\$649.95

GRAND NATIONAL MUFFLERS FOR 2018–2021 M8 HD® SOFTAIL® MODELS — RACE ONLY^{††}

M8 HD Softail models: Street Bob®, Low Rider®, Slim®, Fat Boy® & Breakout® models	Black	550-0737	\$449.95
M8 HD Softail models: Street Bob, Low Rider, Slim, Fat Boy & Breakout models	Chrome	550-0738	\$449.95
M8 HD Heritage Softail Classic & Softail Deluxe models	Chrome	550-0740	\$449.95

[†]Exempt from emissions tampering regulations under CARB EO# K-010-16 for all 2018-2020 Breakout, Fat Boy, Low Rider, Slim, Street Bob, Deluxe, and Heritage Classic Softail Models

^{††}DISCLAIMER: NOT LEGAL FOR SALE OR USE IN CALIFORNIA ON ANY POLLUTION CONTROLLED MOTOR VEHICLE. NOT LEGAL FOR SALE OR USE NATIONWIDE ON ANY FEDERAL POLLUTION CONTROLLED MOTOR VEHICLE UNDER THE CLEAN AIR ACT

 WARNING: Cancer and Reproductive Harm — www.P65Warnings.ca.gov



CARB
compliant
CARB EO K-010-16

SLASH CUT SLIP-ON MUFFLERS

Fitment:

- Fits 2018–2021 HD® Softail® Street Bob®, Low Rider®, Slim®, Fat Boy®, Breakout®, Heritage®, & Classic® models (except Fat Bob®, Sport Glide®, & FXDR models)

Features & Benefits:

- Classic Slash Cut styling
- Show chrome or ceramic black finish
- All hardware and gaskets included
- Deep performance rumble replaces stock whisper tone
- Removable dB reducer included (Race only version)
- Made in USA!



SLASH CUT MUFFLERS FOR 2018–2020 HD® SOFTAIL® MODELS — STREET LEGAL* PERFORMANCE CAT

Fitment	Muffler Body Finish	Part #	MSRP
M8 HD Softail models: Street Bob®, Low Rider®, Slim®, Fat Boy®, & Breakout® models	Black	550-0752B	\$634.95
M8 HD Softail models: Street Bob, Low Rider, Slim, Fat Boy, & Breakout models	Chrome	550-0753B	\$649.95
M8 HD Heritage Softail Classic & Softail Deluxe models	Chrome	550-0756B	\$649.95

SLASH CUT MUFFLERS FOR 2018–2021 M8 SOFTAIL® MODELS — RACE ONLY**

M8 HD Softail models: Street Bob®, Low Rider®, Slim®, Fat Boy®, & Breakout® models	Black	550-0735	\$374.95
M8 HD Softail models: Street Bob, Low Rider, Slim, Fat Boy, & Breakout models	Chrome	550-0736	\$374.95
M8 HD Heritage Softail Classic & Softail Deluxe models	Chrome	550-0739	\$374.95

*Exempt from emissions tampering regulations under CARB EO# K-010-16 for all 2018-2020 Breakout, Fat Boy, Low Rider, Slim, Street Bob, Deluxe, and Heritage Classic Softail Models

**DISCLAIMER: NOT LEGAL FOR SALE OR USE IN CALIFORNIA ON ANY POLLUTION CONTROLLED MOTOR VEHICLE. NOT LEGAL FOR SALE OR USE NATIONWIDE ON ANY FEDERAL POLLUTION CONTROLLED MOTOR VEHICLE UNDER THE CLEAN AIR ACT

⚠️ WARNING: Cancer and Reproductive Harm – www.P65Warnings.ca.gov



CARB
compliant
CARB EO K-010-16



EC SLIP-ON MUFFLERS

for 2018–2020 HD® Softail® models (for Europe)



Features & Benefits:

- EC approved with S&S performance and style
- Race-inspired Grand National® end cap design or the classic slash cut design complements any bike style
- Show chrome or ceramic black finish
- 82mm can with perforated stainless steel baffle and RaceTex cartridge packing
- All hardware and gaskets included
- Made in USA



GRAND NATIONAL® EC SLIP-ON MUFFLERS FOR 2018–2020 M8 HD® SOFTAIL® MODELS

M8 Softail® Street Bob®, Low Rider®, Slim®, Fat Boy® & Breakout® models	Black	550-0824	\$924.95
M8 Softail Street Bob, Low Rider, Slim, Fat Boy & Breakout models	Chrome	550-0825	\$924.95
M8 Softail® Heritage Classic & Deluxe® models	Chrome	550-0826	\$924.95

EU Type-Approval: e9*134/2014*2018/295H*11028*00

SLASH CUT EC SLIP-ON MUFFLERS FOR 2018–2020 M8 HD® SOFTAIL® MODELS

M8 Softail® Street Bob®, Low Rider®, Slim®, Fat Boy® & Breakout® models	Black	550-0821	\$874.95
M8 Softail® Street Bob, Low Rider, Slim, Fat Boy & Breakout models	Chrome	550-0822	\$874.95
M8 Softail® Heritage®/Deluxe® models	Chrome	550-0823	\$874.95

EU Type-Approval: e9*134/2014*2018/295H*11027*00



EC GRAND NATIONAL® SLIP-ON MUFFLERS

for 2018–2020 M8 HD® Fat Bob® Softail® models (for Europe)

Features & Benefits:

- EC approved with S&S performance & style
- Race-inspired Grand National® end cap design
- High temperature ceramic black finish
- 100mm can with perforated stainless steel baffle & RaceTex cartridge packing
- dB reducer included
- All hardware and gaskets included



GRAND NATIONAL® EC 100MM SLIP-ON FOR 2018–2020 HD® SOFTAIL® FAT BOB® MODELS

Finish	Part #	MSRP
Black	550-0827	\$534.95

EU Type-Approval: e9*134/2014*2018/295G*11029*00

EC Mk45 SLIP-ON MUFFLERS

for 2017–2020 M8 models (for Europe)

Features & Benefits:

- EC approved with S&S performance & style
- Bold 4.5" design— with stainless steel baffle & RaceTEX cartridge packing
- Choose from S&S Thruster or Tracer end cap designs in chrome or black
- Performance 2.5" stainless steel perforated baffle
- Made in USA!

Mk45 EC 4.5" SLIP-ON MUFFLERS FOR 2017–2020 TOURING MODELS

Muffler Body Finish	End cap Finish & Style	Part #	MSRP
Chrome	Chrome Thruster	550-0861	\$924.95
	Black Highlight Machined Thruster	550-0860	\$924.95
	Chrome Tracer	550-0864	\$924.95
	Black Highlight Machined Tracer	550-0863	\$924.95
Black	Black Highlight Machined Thruster	550-0862	\$924.95
	Black Highlight Machined Tracer	550-0865	\$924.95

EU Compliant per 11032 G

EC-Type Approval for non-original motorcycle noise abatement device



Black with
Machined Thruster



Black with
Machined Tracer



Chrome with
Chrome Thruster



Chrome with
Machined Thruster



Chrome with
Chrome Tracer



Chrome with
Machined Tracer



NOTES

Not recommended for Tri Glide® or other three wheel models including conversion due to ground clearance.





AIR CLEANER KITS & COVERS



Intake



AIR STINGER AIR CLEANER KITS

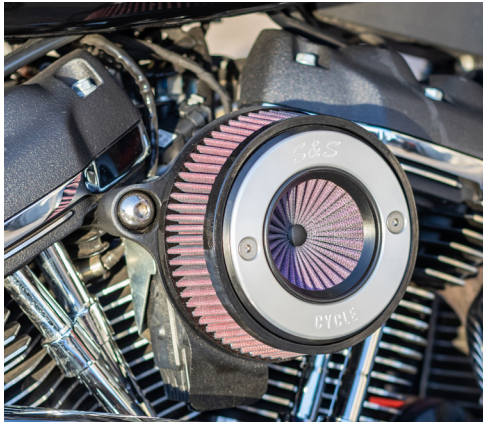
for 2017–2021 M8 models

**NEW
2021**

The Air Stinger takes the existing high flow Stealth air cleaner and replaces the air smoothing stinger with a similarly shaped filter element. More filter surface equals a 55% gain over a factory filter in an M8.



Also available with the classic Mini Teardrop cover in black or chrome or as a replacement cover plate to update your existing Stealth system. The Air Stinger filter element is washable just like the Stealth filters and designed to last for years.



TEARDROP FINISH	PART #	MSRP
Gloss Black	170-0718	\$369.95
Chrome	170-0717	\$369.95
WITH S&S RING		
Brushed Ring	170-0714	\$199.95
AIR STINGER FILTER ONLY	170-0723	\$59.95

DISCLAIMER: NOT LEGAL FOR SALE OR USE IN CALIFORNIA ON ANY POLLUTION CONTROLLED MOTOR VEHICLE

*Qualified Manufacturer Declared 49-State Federal Emissions Compliant Part

WARNING: Cancer and Reproductive Harm — www.P65Warnings.ca.gov



STEALTH AIR CLEANER KITS

See previous page for NEW Air Stinger Kits

Fitment:

- 2017–2021 HD® models with M8 engine
- Works with Screamin' Eagle® 64mm throttle body

Features & Benefits:

- Included actuator cover, hides TBW servo motor for a clean, attractive installation
- Backplate made from high-strength advanced synthetic polymer — *reduces heat transfer to intake air*
- Use with your stock HD M8 engine air cleaner cover (Adapter required — see below)
- High flow (1" taller) filter kit available (PIN 170-0127*)
- Cooler, denser air allows for more efficient cylinder fill & better performance



Air 1

STEALTH AIR CLEANER KITS (Kits include Stealth Kit 170-0354C— Exempt from emissions tampering regulations under CARB EO# D-355-30 for all fuel injected models)

Tribute		Teardrop		Carbon Fiber	Mini		Airstream	
Chrome	Gloss Black	Chrome	Gloss Black	Black	Chrome	Gloss Black	Chrome	Gloss Black
170-0595A	170-0598A	170-0524B	170-0525B	170-0498B	170-0435C	170-0436C	170-0390C	170-0397C
\$338.95	\$338.95	\$338.95	\$338.95	\$493.95	\$338.95	\$338.95	\$338.95	\$338.95

Tri-Spoke	Torker	Air 1
170-0392C	170-0393C	170-0394C
\$338.95	\$338.95	\$338.95

WARNING: Cancer and Reproductive Harm — www.P65Warnings.ca.gov

See ALL our cover options next page



Tribute in Chrome



Mini in Gloss Black

KIT ONLY — NO COVER		MSRP
Stealth Air Cleaner Kit for Stock M8 & 64mm Throttle Body	170-0354C	\$180.95
Adapter for Stock M8 Air Cleaner Cover	170-0352	\$57.95



The S&S Stealth air cleaner backplate is made from the same high-strength advanced synthetic polymers used in high performance automotive intake manifolds and high-end handgun bodies! It offers superior mechanical properties, thermal stability, and chemical resistance. Designed to reduce heat transfer to the intake air for more efficient induction.



STEALTH AIR CLEANER COVERS (ONLY)

STEALTH COVERS

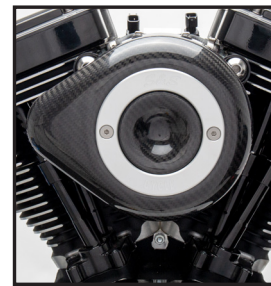
Tribute		Carbon Fiber	Teardrop		Teardrop—Slasher		Mini	
Chrome	Gloss Black	Black	Chrome	Gloss Black	Chrome	Gloss Black	Chrome	Gloss Black
170-0592	170-0593	170-0501	170-0530	170-0531	170-0532	170-0533	170-0367	170-0366
\$180.95	\$180.95	\$314.95	\$180.95	\$180.95	\$191.95	\$191.95	\$180.95	\$180.95

Tri-Spoke	Torker	Air 1	Airstream		Displacement
Gloss Black w/Highlights	Gloss Black w/Highlights	Gloss Black w/Highlights	Chrome	Gloss Black	124
170-0210	170-0206	170-0214	170-0118	170-0396	170-0321
\$170.95	\$170.95	\$170.95	\$170.95	\$170.95	\$184.95

⚠ WARNING: Cancer and Reproductive Harm – www.P65Warnings.ca.gov



Tribute



Carbon Fiber



Teardrop in Chrome



Teardrop in Gloss Black



Teardrop Slasher in Chrome



Teardrop Slasher in Gloss Black



Mini in Chrome



Mini in Gloss Black



Tri-Spoke



Torker



Air 1



Airstream in Gloss Black



Airstream in Chrome



124

HIGH FLOW AIR FILTER KITS

Fitment:

- S&S Stealth Air Cleaners

Features & Benefits:

- Low restriction filter element comes pre-oiled for true plug and play installation
- 1" wider filtration area provides up to 37% more airflow over standard S&S filters
- Resulting band of exposed filter material imparts a high performance look

Kit Contents

- Wide filter
- Filter spacers

HIGH FLOW AIR FILTERS

Description	Fitment	Part #	MSRP
High Flow Air Filter Kit <i>(includes spacers)</i>	Stealth, 1" Taller	170-0127*	\$77.95
1" Taller Filter Only	Stealth	170-0154	\$50.95
Spacer	Classic Teardrop & Stealth, 1" Taller	50-5009-S	\$15.95

*DISCLAIMER: NOT LEGAL FOR SALE OR USE IN CALIFORNIA ON ANY POLLUTION CONTROLLED MOTOR VEHICLE. NOT LEGAL FOR SALE OR USE NATIONWIDE ON ANY FEDERAL POLLUTION CONTROLLED MOTOR VEHICLE UNDER THE CLEAN AIR ACT



REPLACEMENT FILTERS

STANDARD REPLACEMENT AIR FILTERS

Fitment	Part #	MSRP
Stealth	170-0126	\$46.95

PRE-FILTERS

Fitment

- S&S® Stealth Air Filters

Features & Benefits:

- Water resistant
- Prevents large debris from prematurely clogging filter
- Washable Nylon
- Promotes longer filter life
- Reduces the risk of water entering air intake system



PRE-FILTERS

Application	Part #	MSRP
Standard	170-0193	\$45.95
1" Tall	170-0197	\$45.95

EC STEALTH AIR CLEANER KITS

(for Europe)

- 2018–2020 M8 Softail® models (e9 11026G)
- 2017–2020 M8 touring models

EC STEALTH AC KITS

2018–2020 M8 Softail models <i>cover sold separately</i>	170-0521	\$216.95
2017–2020 M8 touring models <i>cover sold separately</i>	170-0521	\$216.95

EU Type-Approval: e9*134/2014*2018/295G*11026*00





CYLINDER KITS, SETS & PISTONS

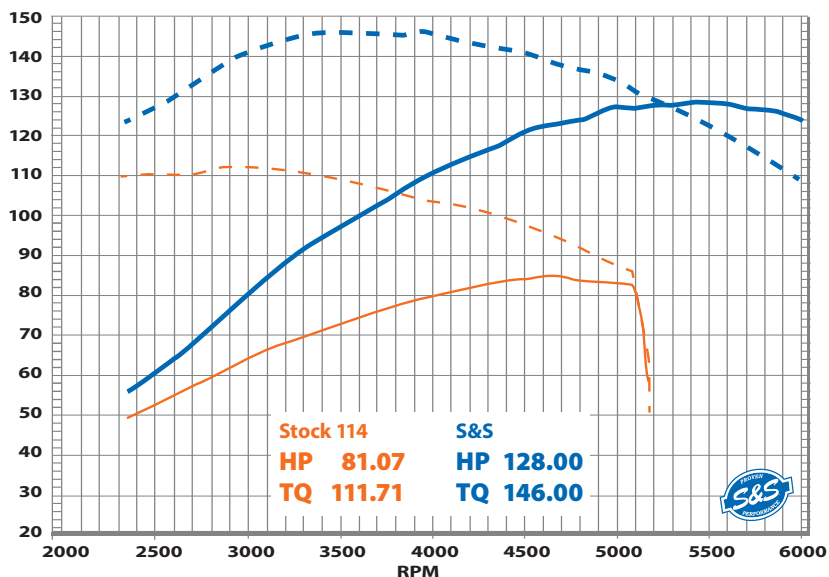
124" & 128" BIG BORE KITS

Fitment:

- 2017–2021 touring models
- 2018–2021 Softail® models

Features & Benefits:

- 107" to 124" Big Bore Kit
- 114" to 128" Big Bore Kit
- 114" & 117" CVO™ to 128" Big Bore Kit
- 4.250" Bore
- Forged Pistons
- 11:1 Compression Ratio
- Wrinkle Black or Black Granite Finish
- Available with or without Highlighted Fins
- Bolt-on Kit—No Machining Required
- Includes Head, Base, & Exhausts Gaskets & Hardware



STOCK vs S&S 128" KIT

on a 2018 HD® Street Glide®—with a stock throttle body, Stealth Air Cleaner, & 2:1 exhaust system

BIG BORE KITS FOR 2017–2021 TOURING MODELS & 2018–2021 SOFTAIL® MODELS

Displacement	Finish	Part #	MSRP
124"	Wrinkle Black with Non-Highlighted Fins	910-0681	\$1,178.95
	Wrinkle Black with Highlighted Fins	910-0625	\$1,178.95
128"	Wrinkle Black with Non-Highlighted Fins	910-0685	\$1,178.95
	Wrinkle Black with Highlighted Fins	910-0684	\$1,178.95
	Black Granite with Highlighted Fins	910-0733	\$1,178.95

DISCLAIMER: FOR CLOSED COURSE COMPETITION USE ONLY. NOT INTENDED FOR STREET USE. LEGAL IN CALIFORNIA ONLY FOR RACING VEHICLES WHICH MAY NEVER BE USED, OR REGISTERED OR LICENSED FOR USE, UPON A HIGHWAY. NOT LEGAL FOR SALE OR USE NATIONWIDE ON ANY FEDERAL POLLUTION CONTROLLED MOTOR VEHICLE UNDER THE CLEAN AIR ACT.



Not recommended for Tri Glide® or other three wheel models including conversion due to lugging nature of these bikes.



131" CYLINDER & PISTON KIT



- Huge displacement increase means huge power increase
- Works with stock crankcases
- Original engine serial numbers are retained
- Powder coat finish match factory finish, giving bike a “sleeper” advantage
- .045" MLS (*multi-layered steel*) head gaskets
- Retains stock engine height
- Includes 131" Cam Cover Badge

• Must be used with our stroker flywheels to achieve 131" displacement (see page 32)

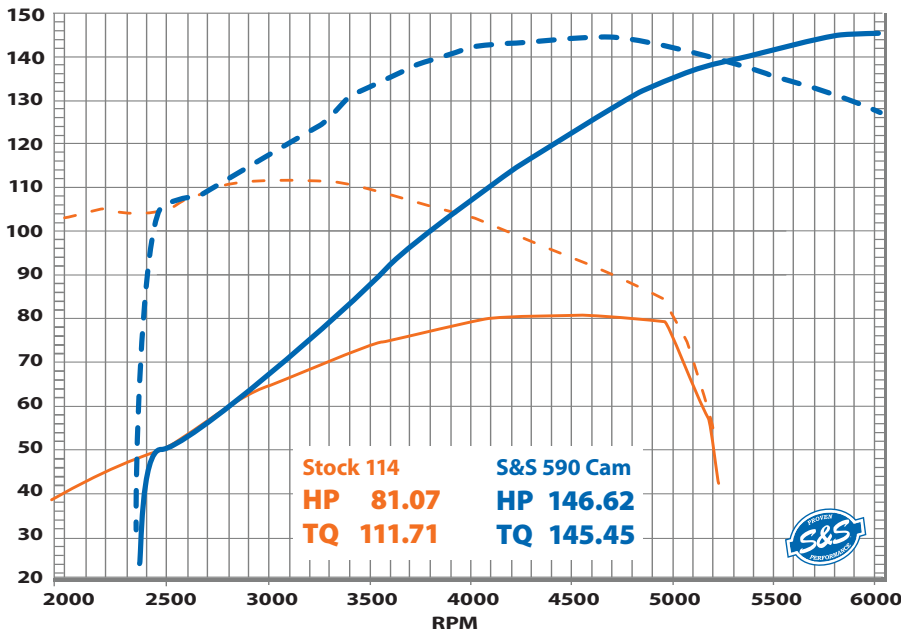
CYLINDER & PISTON KITS FOR 2017–2021 TOURING MODELS & 2018–2021 SOFTAIL® MODELS

Displacement	Finish	Part #	MSRP
131"	Wrinkle Black with Non-Highlighted Fins	910-0763	\$1,364.95
	Wrinkle Black with Highlighted Fins	910-0762	\$1,364.95
	Black Granite with Highlighted Fins	910-0764	\$1,364.95



See our 131" flywheels on page 32

DISCLAIMER: NOT LEGAL FOR SALE OR USE IN CALIFORNIA ON ANY POLLUTION CONTROLLED MOTOR VEHICLE. NOT LEGAL FOR SALE OR USE NATIONWIDE ON ANY FEDERAL POLLUTION CONTROLLED MOTOR VEHICLE UNDER THE CLEAN AIR ACT



STOCK vs S&S 131" KIT
on a 2018 HD® Street Glide®— with CNC Heads, Big Bore Throttle Body, and High-flow Stealth Air Cleaner



CYLINDER SETS

Fitment:

- 2017–2021 touring models
- 2018–2021 Softail® models

Features & Benefits:

- 4.250" Bore
- Wrinkle Black or Black Granite Finish
- Available with or without Highlighted Fins

CYLINDER SETS

Displacement	Finish	Part #	MSRP
124"	Wrinkle Black with Non-Highlighted Fins	910-0683	\$856.95
128"	Wrinkle Black with Highlighted Fins	910-0682	\$856.95
131"	Black Granite with Highlighted Fins	910-0739	\$856.95

DISCLAIMER: FOR CLOSED COURSE COMPETITION USE ONLY. NOT INTENDED FOR STREET USE. LEGAL IN CALIFORNIA ONLY FOR RACING VEHICLES WHICH MAY NEVER BE USED, OR REGISTERED OR LICENSED FOR USE, UPON A HIGHWAY. NOT LEGAL FOR SALE OR USE NATIONWIDE ON ANY FEDERAL POLLUTION CONTROLLED MOTOR VEHICLE UNDER THE CLEAN AIR ACT.



PISTON KITS

- Piston kits include set of pistons, rings, wristpins, and clips

4.250" BORE PISTON KIT FOR M8 MODELS

Displacement	Deck Height	Stroke	Standard	MSRP	+.010	MSRP
124" 4.3cc Dished	1.143"	4.375"	920-0135	\$535.95	920-0141	\$535.95
128" 7.3cc Dished	1.0805"	4.500"	920-0140	\$535.95	920-0142	\$535.95
131" 10.3cc Dished	1.0805"	4.625"	920-0149	\$535.95	920-0148	\$535.95



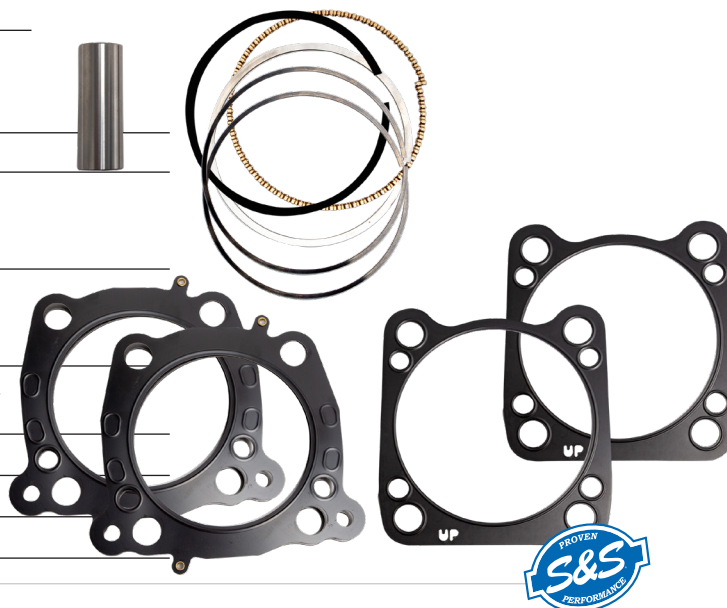
DISCLAIMER: FOR CLOSED COURSE COMPETITION USE ONLY. NOT INTENDED FOR STREET USE. LEGAL IN CALIFORNIA ONLY FOR RACING VEHICLES WHICH MAY NEVER BE USED, OR REGISTERED OR LICENSED FOR USE, UPON A HIGHWAY. NOT LEGAL FOR SALE OR USE NATIONWIDE ON ANY FEDERAL POLLUTION CONTROLLED MOTOR VEHICLE UNDER THE CLEAN AIR ACT.

REPLACEMENT PARTS FOR PISTONS

Piston Ring Set	2 Pack	940-0060	\$139.95
Piston +.010" Ring Set	2 Pack	940-0062	\$139.95
Wristpin Keeper		94-9278-S	\$7.95
Wristpin, .927" x 2.500"		940-0037	\$23.95

GASKET KIT

Description	Thickness	Qty	Part #	MSRP
Head gasket, 4.250" Bore, Stock bolt pattern	.030"	2 Pack	930-0140	\$86.95
Base gasket, Stock to 4.250" Bore, Stock bolt pattern	.014"	2 Pack	930-0139	\$53.95
Gasket Kit, includes Head, Base, & Exhaust, 4.25" Bore			900-0955	\$129.95
Plug			500-0835	\$11.95
Cylinder Dowel Pin		4 Pack	500-0849	\$11.95
HARDWARE KIT			910-0677	\$32.95



124" POWER PACKS

107" to 124" Big Bore Kit:

- Available with or without fin highlighting
- Bolt-on kit—*No case machining required*
- 4.250" bore
- Forged pistons
- 11:1 compression ratio

Oil Pump/Cam Plate:

- Precision machined from billet aluminum
- Independent scavenge sections for flywheel cavity & cam chest
- Debris screens in both scavenge pickups
- Magnet in cam chest to help to stop debris from entering oil pump
- 44% flow increase on supply side & 58% flow increase on scavenge side
- Pressure relief valve is adjustable with unit installed in engine
- Kits now include updated oil pump with groove for optional OEM oil seal

Pushrods:

- Quickee pushrods
- Chrome or gloss black pushrod tubes available

Tappets:

- Hand assembled to exacting tolerances
- Reduced valve train noise from start up to shut down
- Close tolerances for low leak down rates
- Fast pump up and superior high rpm performance

Tappet Cuffs:

- Hard anodized black coating
- Billet aluminum construction
- Improve tappet stability in high lift & high rpm situations

Cam:

- S&S 550 cam—*Designed for big bore applications*
- Available in both gear drive & chain drive variations
- Gear drive kits provide improved cam timing accuracy
- Gear drive kits include outer drive gears

Valve Springs:

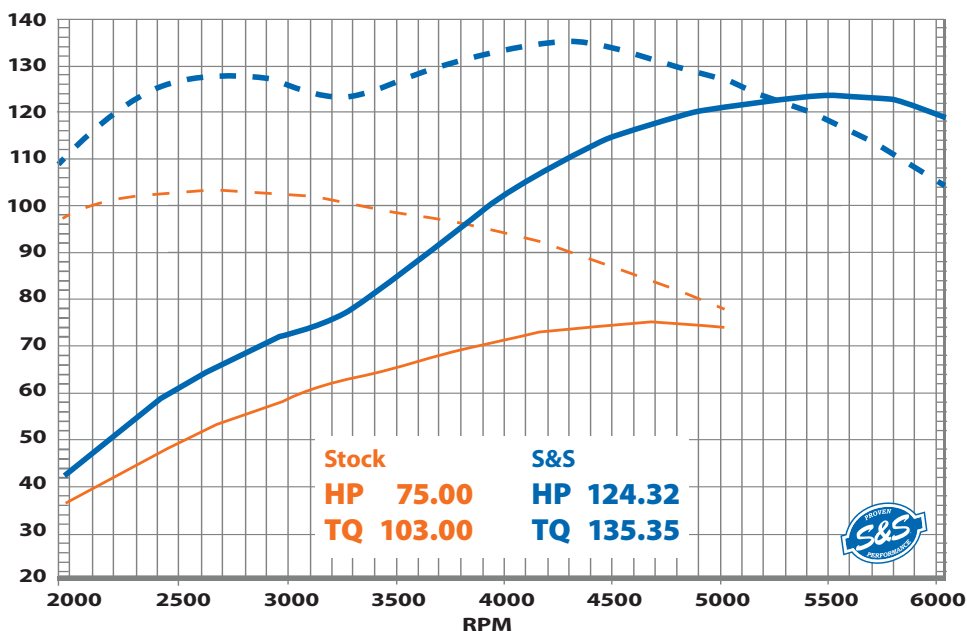
- High performance conical single wire spring
- Includes top collars, keepers, & valve seals/bottom collars

Cam Chain Tensioner

- Comes with Chain Drive Kits
- Precision Machined from Billet Aluminum
- Thicker shoe for longer wear
- Direct chain oiling
- Larger piston for more consistent pressure
- Tighter tolerances improves stability



Not recommended for Tri Glide® or other three wheel models including conversion due to lugging nature of these bikes.



STOCK vs S&S

on a 2017 HD® Limited— with S&S 124" Power Pack, Power Tune® Dual Headers, Mk45 Exhaust, and Stealth Air Cleaner Kit


124" POWER PACKAGE KIT FOR 2017 TOURING MODELS & ALL 2018–2021 HD® MODELS WITH 107" ENGINE

Cooling System	Finish	Drive	Pushrod Tubes	Part #	MSRP
Oil	Wrinkle Black with Highlighted Fins	Chain	Chrome	310-1052B	\$2,874.95
Oil	Wrinkle Black with Highlighted Fins	Gear	Chrome	310-1053A	\$3,040.95
Oil	Wrinkle Black with Highlighted Fins	Chain	Black	310-1056B	\$2,874.95
Oil	Wrinkle Black with Highlighted Fins	Gear	Black	310-1058A	\$3,040.95
Oil	Wrinkle Black with Non-Highlighted Fins	Chain	Black	310-1057B	\$2,874.95
Oil	Wrinkle Black with Non-Highlighted Fins	Gear	Black	310-1059A	\$3,040.95
Water	Wrinkle Black with Highlighted Fins	Chain	Chrome	310-1050B	\$2,874.95
Water	Wrinkle Black with Highlighted Fins	Gear	Chrome	310-1051A	\$3,040.95
Water	Wrinkle Black with Highlighted Fins	Chain	Black	310-1054B	\$2,874.95
Water	Wrinkle Black with Highlighted Fins	Gear	Black	310-1055A	\$3,040.95

DISCLAIMER: NOT LEGAL FOR SALE OR USE IN CALIFORNIA ON ANY POLLUTION CONTROLLED MOTOR VEHICLE. NOT LEGAL FOR SALE OR USE NATIONWIDE ON ANY FEDERAL POLLUTION CONTROLLED MOTOR VEHICLE UNDER THE CLEAN AIR ACT



128" POWER PACKS

for 2017–2021 M8 models with 4.500" stroke

114" to 128" Big Bore Kit &

114" & 117" CVO to 128" Big Bore Kit:

- Wrinkle black or black granite finish
- Available with or without fin highlighting
- Bolt-on kit—*No case machining required*
- 4.250" Bore
- Forged pistons
- 11.1:1 Compression ratio

Oil Pump/Cam Plate:

- Precision machined from billet aluminum
- Independent scavenge sections for flywheel cavity & cam chest
- Debris screens in both scavenge pickups
- Magnet in cam chest to help to stop debris from entering oil pump
- Increased flow capacity on both feed & scavenge side
- Pressure relief valve is adjustable with unit installed in engine
- Kits now include updated oil pump with groove for optional OEM oil seal

Pushrods:

- Quickee pushrods with chrome covers

Tappets:

- Hand assembled to exacting tolerances
- Reduced valve train noise from start up to shut down
- Close tolerances for low leak down rates
- Fast pump up and superior high rpm performance

Tappet Cuffs:

- Hard anodized black coating
- Billet aluminum construction
- Improve tappet stability in high lift & high rpm situations

Cam:

- S&S 550 cam—Designed for big bore applications
- Available in both gear drive & chain drive variations
- Gear drive kits provide improved cam timing accuracy
- Gear drive kits include outer drive gears

Valve Springs:

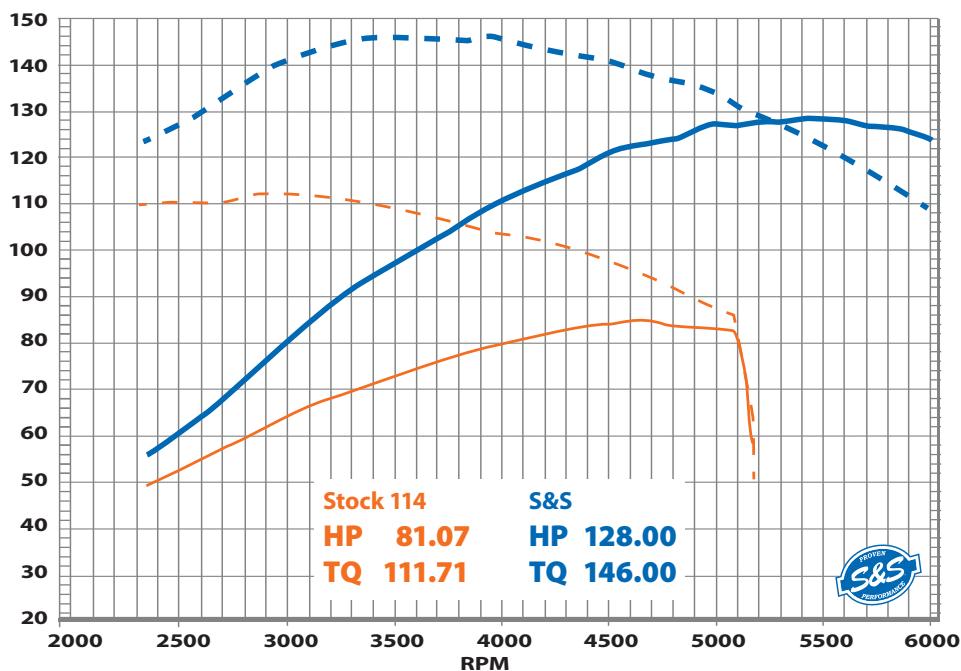
- High performance conical single wire spring
- Includes top collars, keepers, & valve seals/bottom collars

Cam Chain Tensioner

- Comes with Chain Drive Kits
- Precision Machined from Billet Aluminum
- Thicker shoe for longer wear
- Direct chain oiling
- Larger piston for more consistent pressure
- Tighter tolerances improves stability

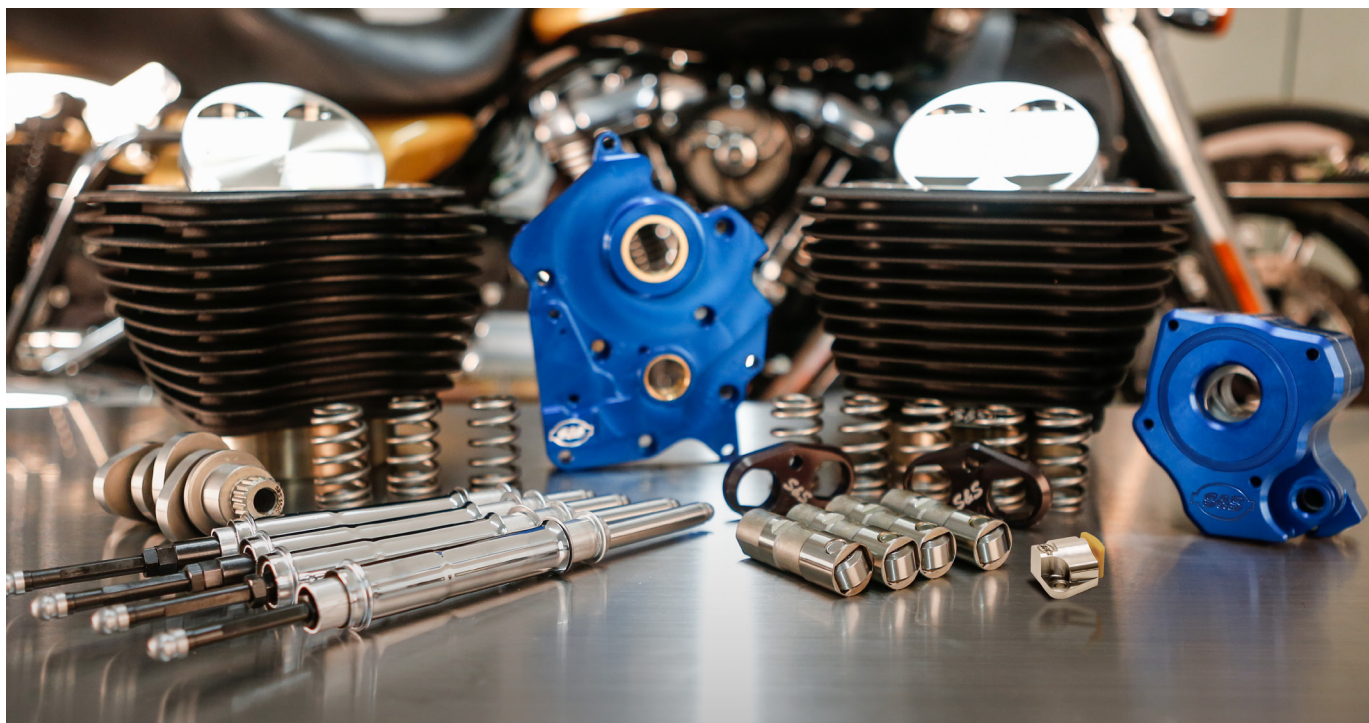


Not recommended for Tri Glide® or other three wheel models including conversion due to lugging nature of these bikes.



STOCK vs S&S

on a 2018 HD® Street Glide®—with S&S 128" Power Pack, stock throttle body, Stealth Air Cleaner and 2:1 Exhaust System

**128" POWER PACKAGE KIT FOR 2017–2021 M8 MODELS WITH 114" ENGINE**

Cooling System	Finish	Drive	Part #	MSRP
Water	Wrinkle Black with Highlighted Fins	Chain	310-1101B	\$2,874.95
Water	Wrinkle Black with Highlighted Fins	Gear	310-1102A	\$3,040.95
Oil	Wrinkle Black with Highlighted Fins	Chain	310-1103B	\$2,874.95
Oil	Wrinkle Black with Highlighted Fins	Gear	310-1104A	\$3,040.95
Oil	Wrinkle Black with Non-Highlighted Fins	Chain	310-1105B	\$2,874.95
Oil	Wrinkle Black with Non-Highlighted Fins	Gear	310-1106A	\$3,040.95
Water	Black Granite with Highlighted Fins	Chain	310-1107B	\$2,874.95
Water	Black Granite with Highlighted Fins	Gear	310-1108A	\$3,040.95
Oil	Black Granite with Highlighted Fins	Chain	310-1109B	\$2,874.95
Oil	Black Granite with Highlighted Fins	Gear	310-1110A	\$3,040.95

DISCLAIMER: FOR CLOSED COURSE COMPETITION USE ONLY. NOT INTENDED FOR STREET USE. LEGAL IN CALIFORNIA ONLY FOR RACING VEHICLES WHICH MAY NEVER BE USED, OR REGISTERED OR LICENSED FOR USE, UPON A HIGHWAY. NOT LEGAL FOR SALE OR USE NATIONWIDE ON ANY FEDERAL POLLUTION CONTROLLED MOTOR VEHICLE UNDER THE CLEAN AIR ACT.

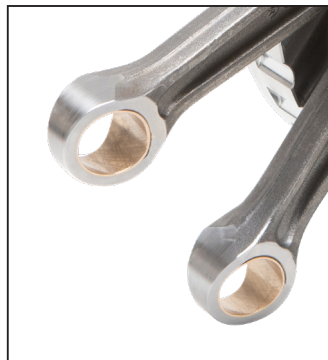


3 PIECE FLYWHEEL ASSEMBLIES

The crankshaft is the heart of any performance engine and S&S Cycle has been perfecting the art for over six decades. Stronger, more durable, and tried to a spec others can only dream of, our new crankshaft assemblies for the M8 platform are the best of the best to build your high performance engine around.

Features & Benefits:

- Available in 4 $\frac{3}{8}$ ", 4 $\frac{1}{2}$ " & 4 $\frac{7}{8}$ " Stroke
- Available with or without Balancer Gear
- Heat Treated 4140 Material is harder & more than twice as strong as stock
- Stronger assembly eliminates need to weld crankpin
- S&S High Strength Connecting Rods are designed with Finite Element Analysis to eliminate weak spots and handle more power!
- Available with either full width or tapered wristpin connecting rods
- Perfect for Gear Drive Cams
- Consistent balance & precision machining
- Capable of higher RPM



Tapered connecting rods



Full Width connecting rods



117" & 131" Not recommended for Tri Glide® or other three wheel models including conversion due to lugging nature of these bikes.



FLYWHEEL ASSEMBLIES FOR 2017–2021 M8 MODELS

Displacement	Stroke	Compression Ratio	Balanced to Total Piston Weight (gms)	Rod Wristpin End Style	Balancer Gear	Part #	MSRP
107" <i>(with stock pistons)</i>	4 3/8"	9.9	1060	Tapered	Yes	320-0601 [†]	\$1,699.95
					No	320-0616 [†]	\$1,599.95
124" <i>(with S&S® cylinders & pistons)</i>	4 3/8"	10.8	1060	Tapered	Yes	320-0601 [†]	\$1,699.95
					No	320-0616 [†]	\$1,599.95
124" <i>(with S&S cylinders & pistons)</i>	4 3/8"	10.8	1213	Full	Yes	320-0604 ^{††}	\$1,699.95
					No	320-0619 ^{††}	\$1,599.95
114" <i>(with stock pistons)</i>	4 1/2"	10.3	1060	Tapered	Yes	320-0598 [†]	\$1,699.95
					No	320-0615 [†]	\$1,599.95
128" <i>(with S&S cylinders & pistons)</i>	4 1/2"	10.8	1060	Tapered	Yes	320-0598 [†]	\$1,699.95
					No	320-0615 [†]	\$1,599.95
128" <i>(with S&S cylinders & pistons)</i>	4 1/2"	10.8	1213	Full	Yes	320-0603 ^{††}	\$1,699.95
					No	320-0618 ^{††}	\$1,599.95
117" <i>(with stock 114" pistons)</i>	4 5/8"	10.6	1060	Tapered	Yes	320-0602 ^{††}	\$1,699.95
					No	320-0617 ^{††}	\$1,599.95
131" <i>(with S&S cylinders & pistons)</i>	4 5/8"	10.8	1060	Tapered	Yes	320-0602 ^{††}	\$1,699.95
					No	320-0617 ^{††}	\$1,599.95
131" <i>(with S&S cylinders & pistons)</i>	4 5/8"	10.8	1213	Full	Yes	320-0605 ^{††}	\$1,699.95
					No	320-0620 ^{††}	\$1,599.95

[†]50-State Replacement Part

^{††}DISCLAIMER: NOT LEGAL FOR SALE OR USE IN CALIFORNIA ON ANY POLLUTION CONTROLLED MOTOR VEHICLE. NOT LEGAL FOR SALE OR USE NATIONWIDE ON ANY FEDERAL POLLUTION CONTROLLED MOTOR VEHICLE UNDER THE CLEAN AIR ACT



TOP END GUARDIAN KIT

**NEW
2021**



The M8 engine platform is capable of serious power, but it also has a few weak spots. The new S&S Cycle Guardian Kit is designed to update the top end to better support big bore and cam mods. If you're doing a 124/128/131 conversion this kit is a must have!

- **Everything you need** to update top end in one convenient kit!
- **Rocker arm shafts** are 66% stronger than stock
- **Rocker arm stud kit** extends the life of your cylinder heads by preventing damage to the rocker arm towers
- **Head bolt kit** is made of 8640 heat treated steel with 200,000 psi Ultimate Tensile strength cold rolled threads & formed washer make these head bolts durable & reusable
- **Roller rocker arms** help relieve additional stress caused by high lift camshafts running at high rpm!

TOP END GUARDIAN KIT

900-1092

\$829.95

DISCLAIMER: NOT LEGAL FOR SALE OR USE IN CALIFORNIA ON ANY POLLUTION CONTROLLED MOTOR VEHICLE. NOT LEGAL FOR SALE OR USE NATIONWIDE ON ANY FEDERAL POLLUTION CONTROLLED MOTOR VEHICLE UNDER THE CLEAN AIR ACT



475 PERFORMANCE CAM KIT WITH TUNER

First of its kind, emissions legal performance cam for M8 touring models. True 100+ HP at the wheel. Kit includes 475 cam and Dynojet PV-3 tuner in gear or chain drive.

Features and benefits:

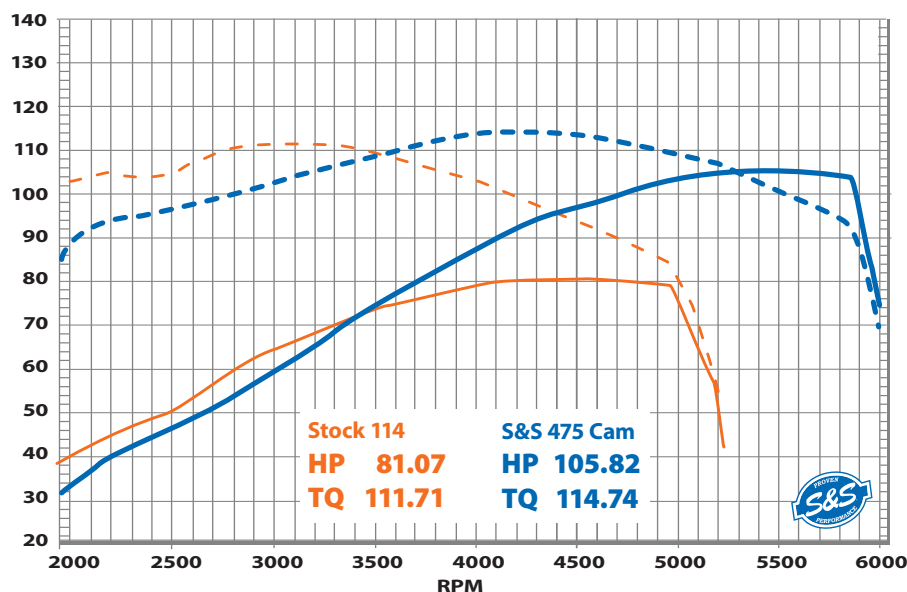
- Bolt-in, legal performance
- Choose between chain or gear driven cam kits
- No need for expensive dyno tuning
- Display vehicle data channels in real-time
- Weather-resistant for use in all conditions
- High contrast display, viewable in direct sunlight



475 PERFORMANCE CAM KIT FOR M8 MODELS

475 Chain Drive	330-0725	\$549.95
475 Gear Drive	330-0726	\$724.95

Exempt from emissions tampering regulations under CARB EO# D-355-32



CAMSHAFT SPECS

350: Stock specs, but eliminates cam drive chain & tensioner

465: Bolt-in cam designed to make best power from 1500–4500 RPM. Excellent low and mid-range torque make this a great choice for two-up riding and touring where low end grunt is the priority. Works great with stock bore, heads and throttle body and with compression ratios up to around 10:1.

475: Bolt-in cam providing best power from 2200–5200 RPM in engines with displacements from 107–135 cubic inches. Compatible with compression ratios up to 11:1. Works great with stock heads and throttle body for mid range power but with the ability to stretch the power higher into the RPM band with more mods.

540: Designed to add even more stump pulling torque to your big bore M8, for those that keep the revs below 6000 RPM when combined with 124 & larger big bore kits.

550: High lift cams for maximizing peak torque and horsepower. Designed to make top end power in combination with our big bore cylinder and piston kits. Excellent power from 3000 RPM to redline. Requires performance valve springs and adjustable pushrods. Suitable for compression ratios between 10:1 and 12:1.

590: Designed as an all out Horsepower Cam for 124 and larger engines. Big lift lets your big mill breathe high into the RPM range!



S&S® CAMSHAFT SPECIFICATIONS

Cam Name	Cylinder	Valve Timing		Valve Duration		Valve Lift		Lobe Center Line		Valve Lift @TDC	
		Intake	Exhaust	Intake	Exhaust	Intake	Exhaust	Intake	Exhaust	Intake	Exhaust
		Open BTDC/ Close ABDC	Open BBDC/ Close ATDC								
350G Stock Grind Gear Drive	Both	-7.0/1.0	33.0/-14.0	174.0	199.0	.350	.374	94.0	113.5	.057	.048
465 Performance	Front	2.6/14.6	30.1/8.8	197.2	218.9	.462	.462	96.0	100.6	.087	.109
	Rear	2.8/14.4	33.1/5.8	197.2	218.9	.462	.462	95.8	103.6	.088	.098
475 HP	Front	6.2/27.2	55.5/28.5	213.5	263.9	.475	.475	100.5	103.5	.107	.208
	Rear	2.2/31.2	52.5/20.2	213.5	252.5	.475	.475	104.5	106.0	.093	.170
540 Big Bore Torque	Front	17.7/30.6	21.2/33.9	228.3	235.1	0.540	0.540	96.4	83.6	0.175	0.262
	Rear	14.9/28.7	37.7/26.9	223.6	244.6	0.540	0.540	96.9	95.4	0.161	0.216
550 Big Bore	Front	9.4/29.4	62.5/30.5	218.9	273.1	.550	.550	100.0	106.0	.127	.232
	Rear	3.1/31.1	59.4/38.4	214.2	277.8	.550	.550	104.0	100.5	.099	.264
590 Big Bore Max HP	Front	15.6/43.7	64.8/21.2	239.4	266.1	0.59	0.59	104.1	111.7	0.165	0.186
	Rear	20.2/53.6	62.7/15.7	253.9	258.4	0.59	0.59	106.7	113.5	0.186	0.158

DISCLAIMER: NOT LEGAL FOR SALE OR USE IN CALIFORNIA ON ANY POLLUTION CONTROLLED MOTOR VEHICLE. NOT LEGAL FOR SALE OR USE NATIONWIDE ON ANY FEDERAL POLLUTION CONTROLLED MOTOR VEHICLE UNDER THE CLEAN AIR ACT

CAM KITS

Fitment:

- 2017–2021 touring and 2018–2021 Softail® models

Features & Benefits:

- **350G** gear drive cam has stock specs, but eliminates cam drive chain & tensioner
- **465** Cam is designed for touring applications, focusing power in lower RPM range and substantial increase in torque
- **475** Cam bumps HP to over a 100 and makes bigger power towards top end of RPM range
- **540** Cam was designed to add even more stump pulling torque to your big bore M8
- **550** Cam was designed for maximizing peak torque and horsepower
- **590** Cam is designed as an all out Horsepower Cam for 124 & larger engines
 - Big lift lets your big mill breathe high into the RPM range!
- Cam kits include all required bearings, o-rings, and hardware
- Gear drive cams provide improved valve timing accuracy
- Made in the USA
- S&S Camshaft installation kits* for M8 models include the essentials for performance cam installations: a high quality inner needle bearing, cam cover gasket, o-rings and gear drive specific hardware on gear drive kits are bundled with step by step instructions to smooth out your bumpstick install

CHAIN DRIVE CAMSHAFTS FOR 2017–2021 HD® MODELS WITH M8 ENGINE

Description	Part #	MSRP
465C	330-0620	\$203.95
475C	330-0641	\$203.95
540C	330-0713	\$203.95
550C	330-0643	\$203.95
590C	330-0730	\$203.95

DISCLAIMER: NOT LEGAL FOR SALE OR USE IN CALIFORNIA ON ANY POLLUTION CONTROLLED MOTOR VEHICLE. NOT LEGAL FOR SALE OR USE NATIONWIDE ON ANY FEDERAL POLLUTION CONTROLLED MOTOR VEHICLE UNDER THE CLEAN AIR ACT

REPLACEMENT PARTS

Description	Part #	MSRP
Cam Cover Gasket	310-0911	\$17.95
Pinion Gear	330-0622	\$105.95
Undersized Pinion Gear	330-0626	\$117.95
Oversized Pinion Gear	330-0627	\$117.95
Cam Gear Drive	330-0621	\$202.95

GEAR DRIVE CAMSHAFTS FOR 2017–2021 HD® MODELS WITH M8 ENGINE

Description	Part #	MSRP
350G – Stock	330-0625	\$407.95
465G	330-0624	\$407.95
475G	330-0645	\$407.95
540G	330-0715	\$407.95
550G	330-0647	\$407.95
590G	330-0732	\$407.95

DISCLAIMER: NOT LEGAL FOR SALE OR USE IN CALIFORNIA ON ANY POLLUTION CONTROLLED MOTOR VEHICLE. NOT LEGAL FOR SALE OR USE NATIONWIDE ON ANY FEDERAL POLLUTION CONTROLLED MOTOR VEHICLE UNDER THE CLEAN AIR ACT

*CAMSHAFT INSTALLATION KITS FOR ALL 2017–2021 M8 MODELS

Description	Part #	MSRP
Chain Drive Installation Kit	330-0619	\$39.95
Gear Drive Installation Kit	330-0623	\$45.95



CAM PLATE & OIL PUMP KITS

Fitment:

- 2017–2021 touring M8 models

Oil Pumps

- Precision machined from billet aluminum
- Independent scavenge sections for flywheel cavity and cam chest
- Debris screens in both scavenge pickups
- Magnet in cam chest to help prevent debris from entering pump
- Pressure relief valve can be adjusted with unit in engine

Cam Plate

- Precision machined from billet aluminum
- Passage plugs removable for servicing
- Bronze bushings for better lubrication & improved wear characteristics

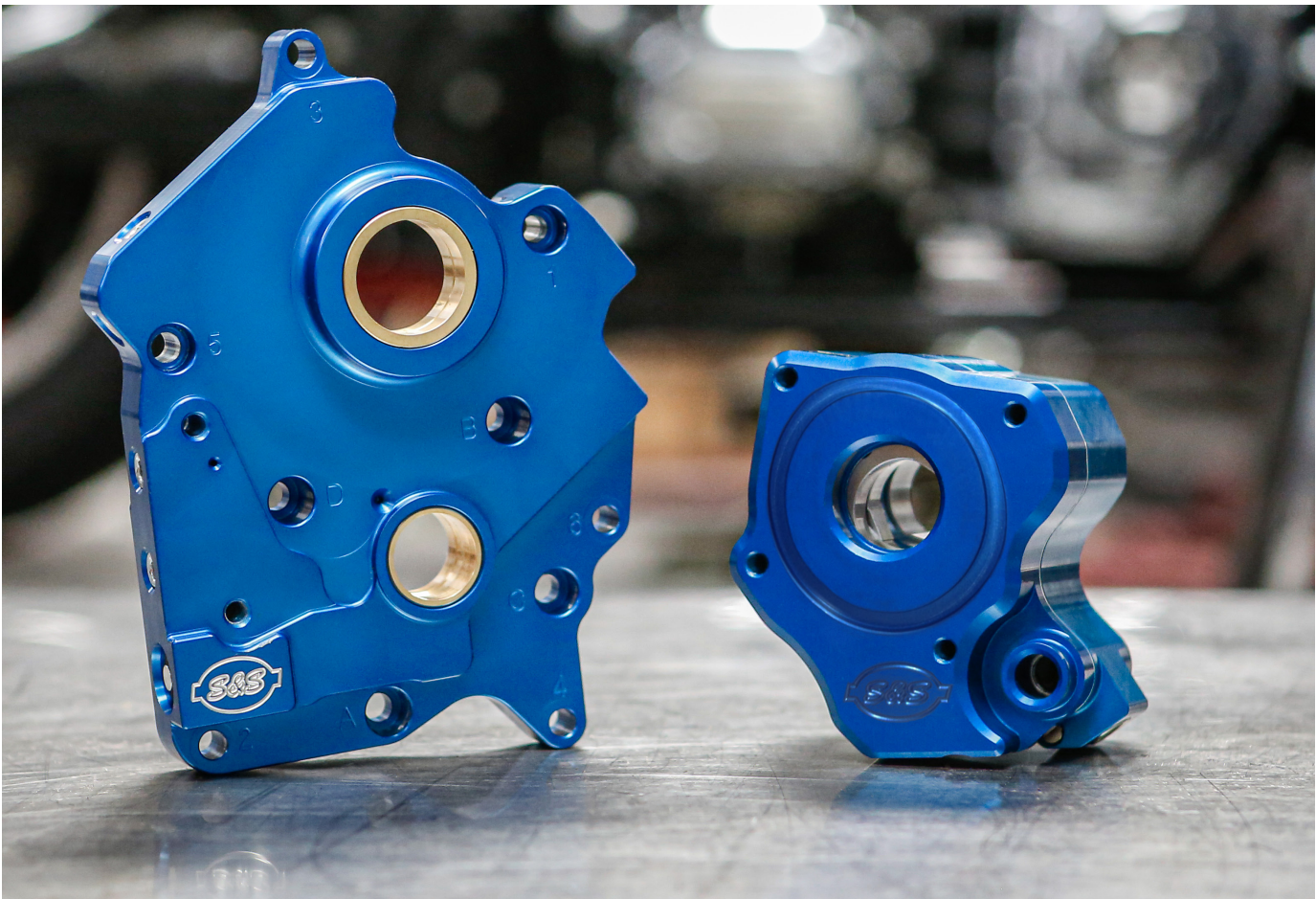
Kits

- Buy together and save \$\$

CAM PLATE & OIL PUMP KITS FOR M8 MODELS

Description	Part #	MSRP
Cam Plate & Oil Pump/Oil-Cooled	310-0998B	\$749.95
Cam Plate & Oil Pump/Water-Cooled	310-0997B	\$749.95
CAM PLATE ONLY	310-0939A	\$334.95
OIL PUMP ONLY		
Description	Part #	
Oil-Cooled	310-0959A	\$499.95
Water-Cooled	310-0947A	\$499.95

- **44% flow increase on supply side and 58% flow increase on scavenge**



CAM CHAIN TENSIONER

**NEW
2021**



Fitment

- 2017–2021 M8 models

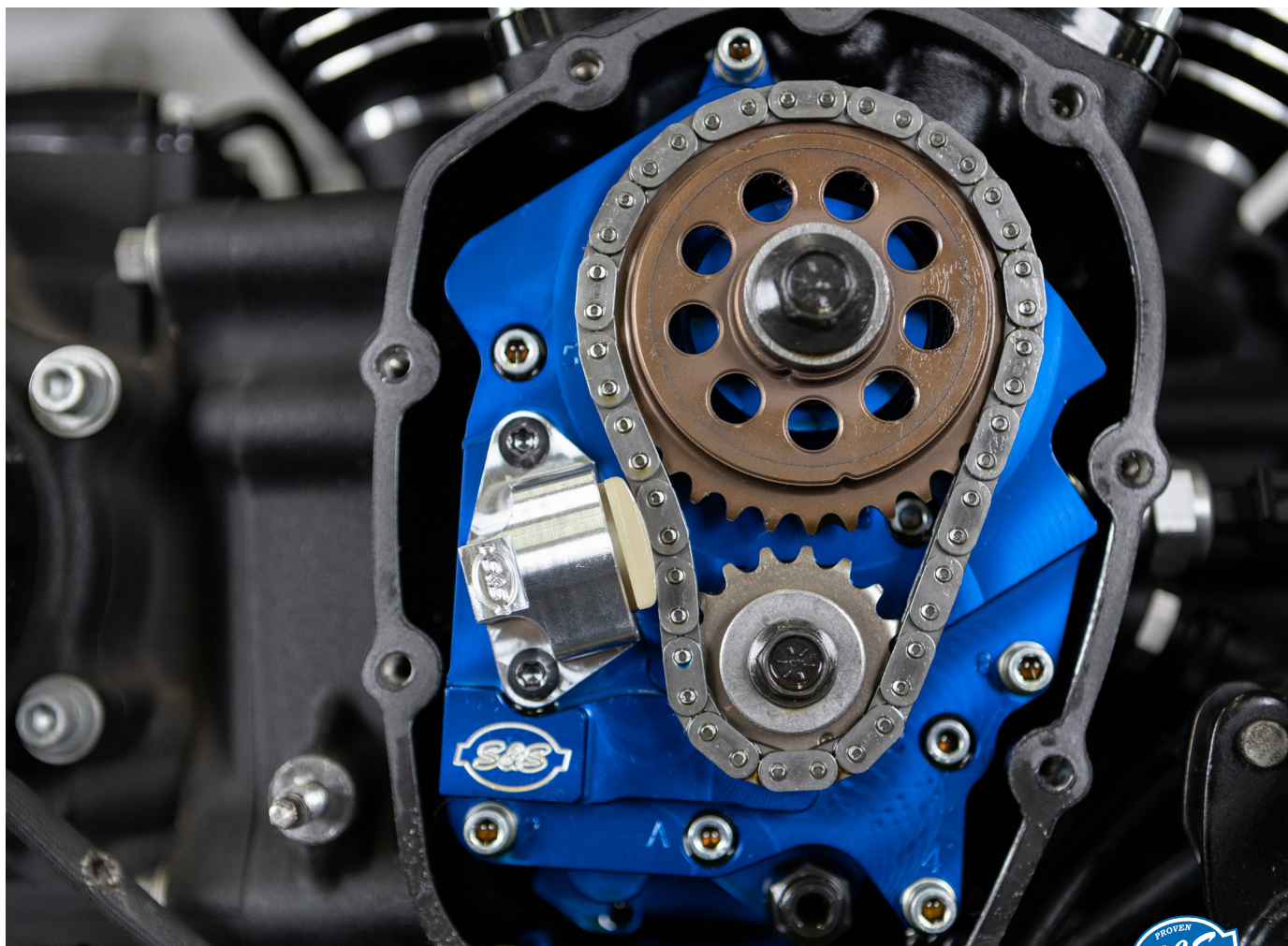
Features & Benefits:

- Precision Machined from Billet Aluminum
- Thicker shoe for longer wear
- Direct chain oiling
- Larger piston for more consistent pressure
- Tighter tolerances improves stability



CAM CHAIN TENSIONER FOR M8 MODELS

330-0737 \$84.95



CAM CHEST KITS

Fitment:

- 2017–2021 HD® touring models
- 2018–2021 HD Softail® models

Oil Pump/Cam Plate:

- Precision machined from billet aluminum
- Passage plugs removable for servicing
- Independent scavenge sections for flywheel cavity and cam chest
- Debris screens in both scavenge pickups
- Magnet in cam chest to help to stop debris from entering oil pump
- 44% flow increase on supply side and 58% flow increase on scavenge
- Pressure relief valve is adjustable with unit installed in engine
- Kits now include updated oil pump with groove for optional OEM oil seal

Pushrods:

- Quickee Pushrods
- Chrome or Gloss Black pushrod tubes available

Tappets:

- Hand assembled to exacting tolerances
- Reduced valve train noise from start up to shut down
- Close tolerances for low leak down rates
- Fast pump up and superior high rpm performance

Tappet Cuffs:

- Hard anodized black coating
- Billet aluminum construction
- Improve tappet stability in high lift & high rpm situations

Cam:

- S&S 465, 475, 540, or 550 cam
- 465 is a torque cam—*perfect for touring applications*
- 475 is a bolt-in 100hp cam!
- 540 is designed to add even more stump pulling torque to your big bore M8, for those that keep the revs below 6000 rpm. Requires the addition of valve springs (*included in kit*)
- 550 is designed for use with large displacement engines. Requires the addition of valve springs (*included in kit*)
- Available in both gear drive and chain drive variations
- Gear drive kits provide improved cam timing accuracy & eliminate the stock cam chain tensioner

Valve Springs:

- Comes with the high lift kits, 540 & 550
- Works with cams up to .605 lift
- High Performance Conical Single Wire Spring *includes: Springs, Top Collars, Keepers, Valve Seal/Bottom Collar*

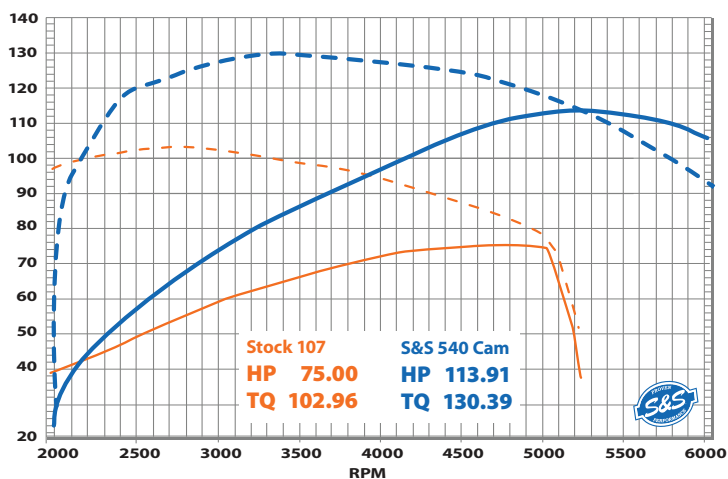
Cam Chain Tensioner

- Comes with Chain Drive Kits
- Precision Machined from Billet Aluminum
- Thicker shoe for longer wear
- Direct chain oiling
- Larger piston for more consistent pressure
- Tighter tolerances improves stability



INCLUDES ALL GASKETS, BEARINGS, & HARDWARE REQUIRED FOR INSTALLATION
MADE IN USA



**STOCK CAM vs 540 CAM**

on a 2017 HD® Limited — 124 Big Bore kit, 5.5 g/s injectors,
2:1 Sidewinder, Stealth +1 Air Cleaner

STOCK CAM	Max Power = 75.00
	Max Torque = 102.96
540 CAM	Max Power = 113.91
	Max Torque = 130.39

CAM CHEST KITS FOR 2017–2021 TOURING MODELS & 2018–2021 SOFTAIL® MODELS

Oil Cooled	Pushrods	Part #	MSRP
Chain Drive 550C	Chrome	310-1082B	\$1,753.95
Chain Drive 540C	Chrome	310-1118A	\$1,671.95
Chain Drive 475C	Chrome	310-1004B	\$1,432.95
Chain Drive 465C	Chrome	310-1003B	\$1,432.95
Gear Drive 550G	Chrome	310-1083A	\$1,927.95
Gear Drive 540G	Chrome	310-1119	\$1,927.95
Gear Drive 475G	Chrome	310-1006A	\$1,606.95
Gear Drive 465G	Chrome	310-1005A	\$1,606.95
Chain Drive 475C	Black	310-1012B	\$1,464.95
Chain Drive 465C	Black	310-1011B	\$1,464.95
Gear Drive 475G	Black	310-1014A	\$1,638.95
Gear Drive 465G	Black	310-1013A	\$1,638.95
Water Cooled	Pushrods	Part #	MSRP
Chain Drive 550C	Chrome	310-1080B	\$1,753.95
Chain Drive 540C	Chrome	310-1116A	\$1,671.95
Chain Drive 475C	Chrome	310-1000B	\$1,432.95
Chain Drive 465C	Chrome	310-0999B	\$1,432.95
Gear Drive 550G	Chrome	310-1081A	\$1,927.95
Gear Drive 540G	Chrome	310-1117	\$1,927.95
Gear Drive 475G	Chrome	310-1002A	\$1,606.95
Gear Drive 465G	Chrome	310-1001A	\$1,606.95
Chain Drive 475C	Black	310-1008B	\$1,464.95
Chain Drive 465C	Black	310-1007B	\$1,464.95
Gear Drive 475G	Black	310-1010A	\$1,638.95
Gear Drive 465G	Black	310-1009A	\$1,638.95

DISCLAIMER: NOT LEGAL FOR SALE OR USE IN CALIFORNIA ON ANY POLLUTION CONTROLLED MOTOR VEHICLE. NOT LEGAL FOR SALE OR USE NATIONWIDE ON ANY FEDERAL POLLUTION CONTROLLED MOTOR VEHICLE UNDER THE CLEAN AIR ACT



TAPPET CUFFS

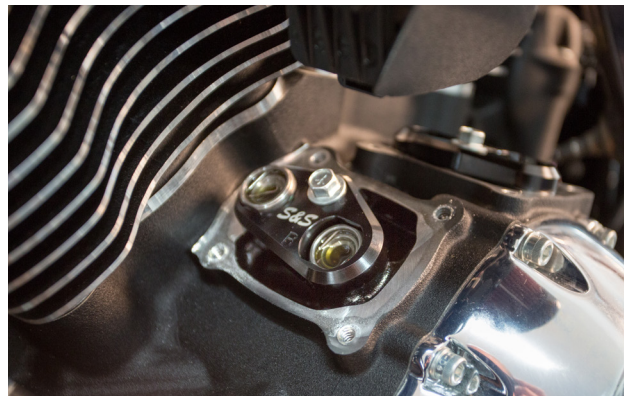
Factory tappet guides are constructed of plastic and are at risk for allowing the tappets to twist under heavy stress. S&S Tappet Cuffs capture the tappets without impacting vertical motion and keep them perfectly aligned, even in high stress, high RPM situations

Fitment:

- 2017–2021 touring models
- 2018–2021 HD® Softail® models

Features & Benefits:

- Hard anodized black coating
- Billet aluminum construction
- Stronger material eliminates distortion
- Improve tappet stability in high lift and high rpm situations
- An easy upgrade when changing tappets or doing a cam change



TAPPET CUFFS

Fitment	Part #	MSRP
2017–2021 HD® touring models 2018–2021 HD Softail® models	330-0655	\$65.95



PRECISION TAPPETS

High performance tappets are a cornerstone of the S&S line up and we are always looking to improve our products. After months of research and countless hours of testing we are excited to reveal the latest in performance tappets. The S&S Cycle Precision Tappets replace both our standard as well as premium aatappets. Each Precision Tappet is hand assembled to exacting tolerances and designed for quiet operation and rapid pump up and all are made in the USA.

Fitment:

- 2017–2021 big twins with M8 engine

Features & Benefits:

- Reduced valve train noise from start up to shut down
- Close tolerances for low leak down rates
- Fast pump up and superior high rpm performance

PRECISION TAPPETS

Set of 4 tappets	330-0718	\$236.95
------------------	-----------------	----------



QUICKEE ADJUSTABLE PUSHRODS

Fitment:

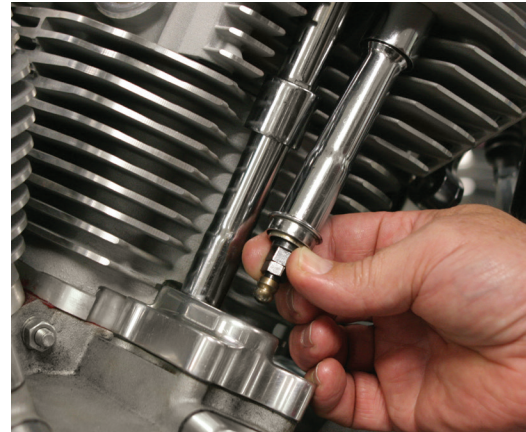
- 2017–2021 big twins with M8 engine

Features & Benefits:

- Adjustable to accommodate all tappets and cam base circle diameters and engine heights
- Easy to install—removal of rocker box not needed
- No threads on wrench flats
- Also available in gloss black

Kit Contents

- Pushrods, gloss black or chrome pushrod covers, o-rings, and cover keepers



QUICKEE ADJUSTABLE PUSHRODS

Description	Part #	MSRP
Gloss Black Pushrod Kit <i>(includes black pushrod covers, o-rings & cover keepers)</i>	930-0137	\$279.95
Chrome Pushrod Kit <i>(includes chrome pushrod covers, o-rings, & cover keepers)</i>	930-0123[±]	\$254.95
Pushrods Only	93-5122	\$180.95

PUSHROD REPLACEMENT PARTS FOR 2017–2021 BIG TWINS WITH THE M8 ENGINE

Description		Part #	MSRP
Pushrod Cover Kit <i>(includes top & bottom covers, cover cap, cover spring, spring washer, & o-rings for four pushrods)</i>	Gloss Black	930-0124	\$180.95
	Chrome	106-1340	\$166.95
Top Cover		93-4016	\$15.95
Bottom Cover		93-4015	\$16.95
Cover Cap		93-4017	\$11.95
Cover Spring		93-4018	\$4.95
Cover Cap Washer		50-7131	\$4.95
Pushrod O-ring Kit <i>(includes top, middle, & bottom o-rings for four pushrods)</i>		93-4022	\$9.95
Top O-ring		50-8039	\$4.95
Middle O-ring		50-8038	\$4.95
Bottom O-ring		50-8037	\$4.95



PUSHROD COVER KEEPER SETS

Pushrod Cover Keeper Kit (2.200")	Gloss Black	930-0138	\$65.95
	Chrome	930-0129	\$32.95

 **WARNING:** Cancer and Reproductive Harm – www.P65Warnings.ca.gov

NOTES S&S quickee pushrods require S&S aftermarket tubes.

ROCKER ARM SHAFT SET



- M8 Rocker Arm Shafts are a direct replacement for OEM (HD® part #17300059B)
- Improved durability
- Made from bearing quality steel, precision centerless ground for perfect fit!
- S&S Shafts are 66% stronger, preventing damage from radical cam profiles



ROCKER ARM SHAFT SET | 900-1090 | \$149.95

NOTES S&S recommends installing Rocker Stud kit 900-1013. See next page.



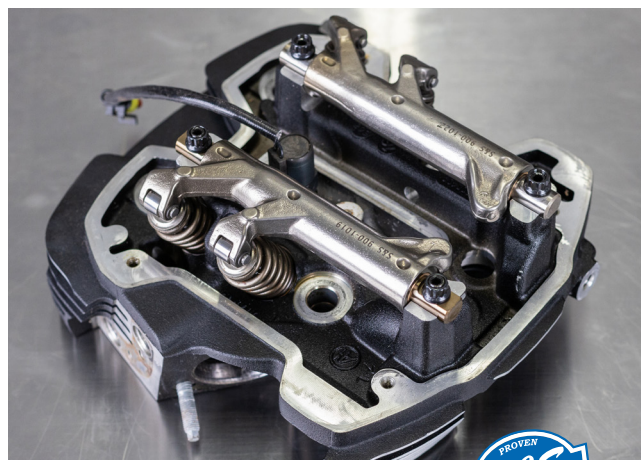
FORGED ROLLER ROCKER ARMS

Big lift cams can open up the high rpm potential of the M8 powerplant, but they can also cause their own issues due to the extra stresses and stock valve train geometry. Excessive valve thrust and valve train wear inspired S&S engineers to design stronger, more durable components that will help you get the most out of your M8.

S&S Forged Roller Rocker arms for M8 models are stronger, more durable and easier on the rest of your valve train, and are essential for increasing the longevity of your valve train components on cams with .540" or greater lift!

Features & Benefits:

- Forged from 8620 steel for greater strength
- Designed using Finite Element Analysis (FEA)
- Rollers eliminate thrusting on valves for decreased wear on the valve train
- Rocker geometry is better suited to high lift cams
- Larger surface area on the thrust surfaces reduces wear on the heads
- Oil is sprayed directly on the valve springs, reducing potential for breaking a valve due to over-heating
(stock rockers tend to oil the rocker boxes, not the valves)
- Compatible with stock or S&S CNC heads
- 1.640 Ratio
- Capable of .650" max Valve Lift
- Serviceable and rebuildable for long term durability
- A must have for cams with .540" or greater lift!



FORGED ROLLER ROCKER ARMS

S&S Forged Roller Rocker Arms for M8 Models	900-1084	\$551.95
Rebuild Kit	900-1087	\$131.95



ROCKER ARM STUD KIT

Features & Benefits:

- Aircraft grade C4037 steel stud and 12 point nut
- Allows for removal of rocker arm assemblies without damage to the head
- A must have for performance builds

ROCKER ARM STUD KIT

Rocker Arm Stud Kit for M8 2017–2021 Models	900-1013	\$107.95
---	-----------------	----------



VALVE SPRINGS

Features & Benefits:

- Works well with cams up to .605" lift
- High Performance conical single wire spring
- Kit includes: Springs, Top Collars, Keepers, & Valve seal/bottom collar



Lift	Installed Height	Seat Force	Force @ Max Lift
.605"	1.535"	68 lb.	264 lb.

VALVE SPRING KIT

Description	Part #	MSRP
Valve Spring Kit for M8 2017–2021 Models	900-0958	\$321.95

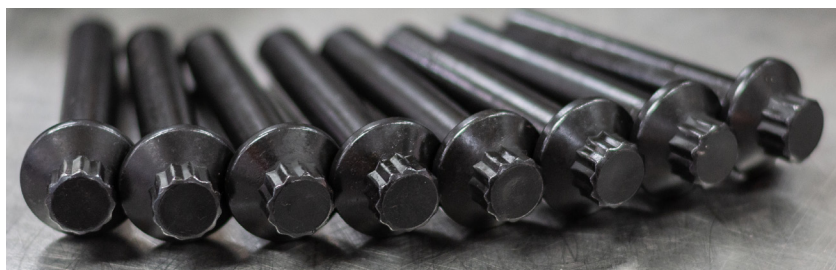
REPLACEMENT PARTS FOR VALVE SPRING KITS

Description	Part #	MSRP
Valve Keeper	900-0956	\$4.95
Top Collar	900-0952	\$14.95
Valve Stem Oil Seal, Hat Style, 6mm, M8 models	8 pack 900-0959	\$34.95

HEAD BOLTS

Features & Benefits:

- 14% increase in strength over stock
- Heat treated 8640 steel
- 200,000 psi ultimate tensile strength
- Durable black oxide coating
- 9/16" 12 point head with integral washer
- Formed threads
- Cold formed head
- Compatible with both MLS & graphite head gaskets
- Reusable



HEAD BOLTS

Description	Part #	MSRP
Sold as set of 8	900-1006	\$129.95



Recommended for use with S&S Power Packs and Big Bore Kits for M8

INNER PRIMARY BEARING RACE

Fits:

- 2017–2021 M8 models

Features & Benefits:

- Will not “walk” on transmission mainshaft
- Prevents costly damage to mainshaft seal, output gear & output gear bearing
- Simple to install



INNER PRIMARY BEARING RACE	560-0241	\$67.95
----------------------------	-----------------	---------

S&S® LUBRICANTS

Features & Benefits:

- Ultimate protection
- Superior lubrication for reduced engine wear and lower oil temperatures
- Provides consistent viscosity, and resists thermal breakdown and oxidation at elevated temperatures
- Includes a oil drain plug o-ring



S&S® OIL CHANGE KIT

Description	Part #	MSRP
2017–2021 HD® Models with M8 engine 5 quarts of SAE 20W-50 Synthetic Engine Oil with chrome oil filter	3601-0492	\$92.95

S&S® OIL

Description	Part #	MSRP
20W50 Synthetic, 1 quart	3601-0407	\$15.95
20W50 Synthetic, 2.5 Gallon	3601-0408	\$146.95
Primary, Synthetic, 1 quart	3603-0044	\$15.95
80W140 Gear, Synthetic, 1 quart	3604-0007	\$15.95



OIL FILTERS

Features & Benefits:

- Captures smaller particles than stock filters
- Low restriction to oil flow
- Direct bypass—bypass oil does not pass over dirty filter media
- Smaller diameter for easier installation
- Black or chrome finish



S&S® OIL FILTERS

Year Application	Micron Rating	QTY	Chrome	MSRP	Black	MSRP
M8 engines	10µ	each	31-4104A 63798-99A	\$19.95	31-4103A 63731-99A	\$16.95
		12 pack	310-0242	\$213.95	310-0241	\$160.95

*Contains an anti-drain back valve

GASKETS

GASKETS

Cam Cover		310-0911	\$17.95
Exhaust Gaskets	each	106-5029	\$4.95
	10 pack	93-1072	\$51.95
Valve Stem Oil Seal, Hat Style, 6mm,	8 pack	900-0959	\$34.95
Head gasket, 4.25" Bore, .030" Stock bolt pattern	2 pack	930-0140	\$86.95

Base gasket, Stock to 4.250" Bore, .014" Stock bolt pattern	2 pack	930-0139	\$53.95
Gasket Kit, includes Head, Base, & Exhaust, 4.25" Bore		900-0955	\$129.95
O-ring kit, Oil Pump		500-0850	\$6.95





Made in USA

**S&S® Cycle, Inc. • 14025 CTY HWY G • Viola, WI 54664
608-627-1497 • sscust@sscycle.com • sscycle.com
510-0728 • March 2021**

S&S Cycle, Inc. reserves the right to change prices, terms, availability, and specifications without prior notice.