



**PERFORMANCE
EXHAUST**

by S&S® Cycle



POWER

EL DORADO TOURING EXHAUST SYSTEM

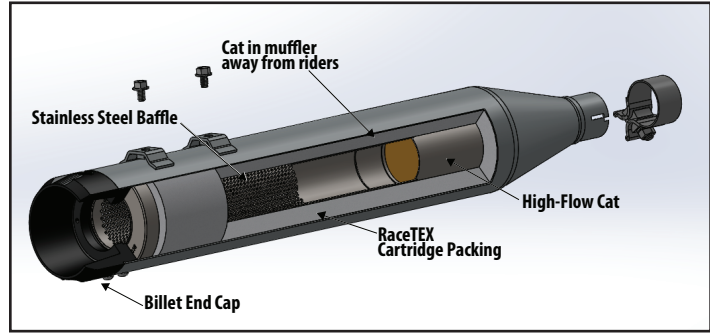
Mk45 Muffler/Header Package

Fits:

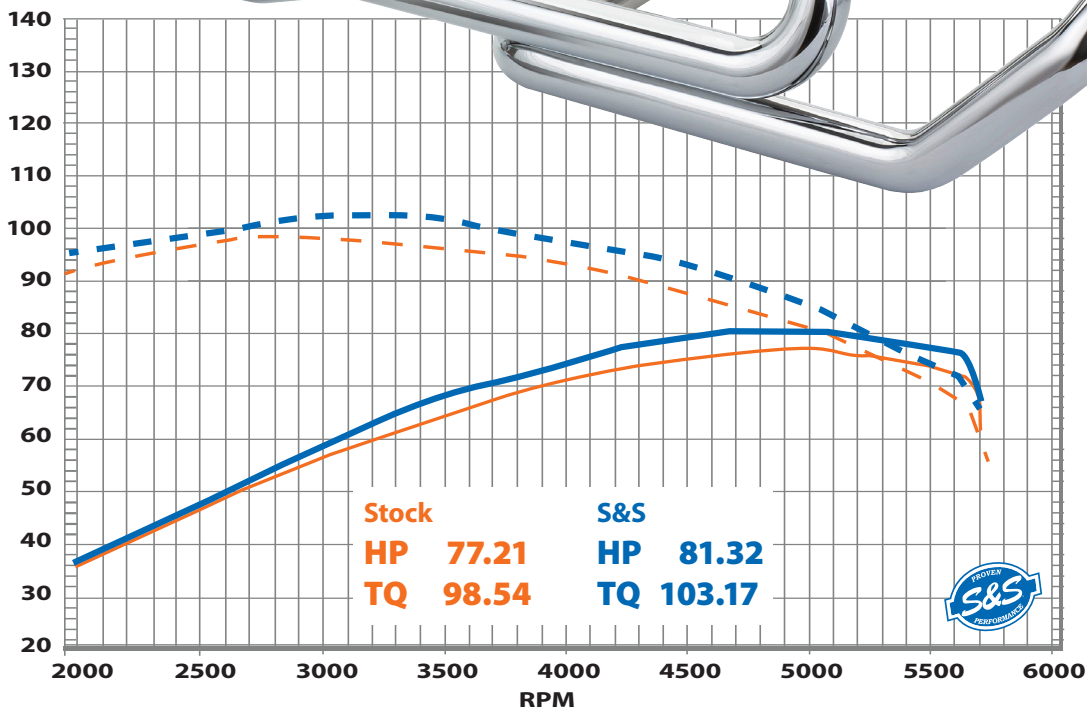
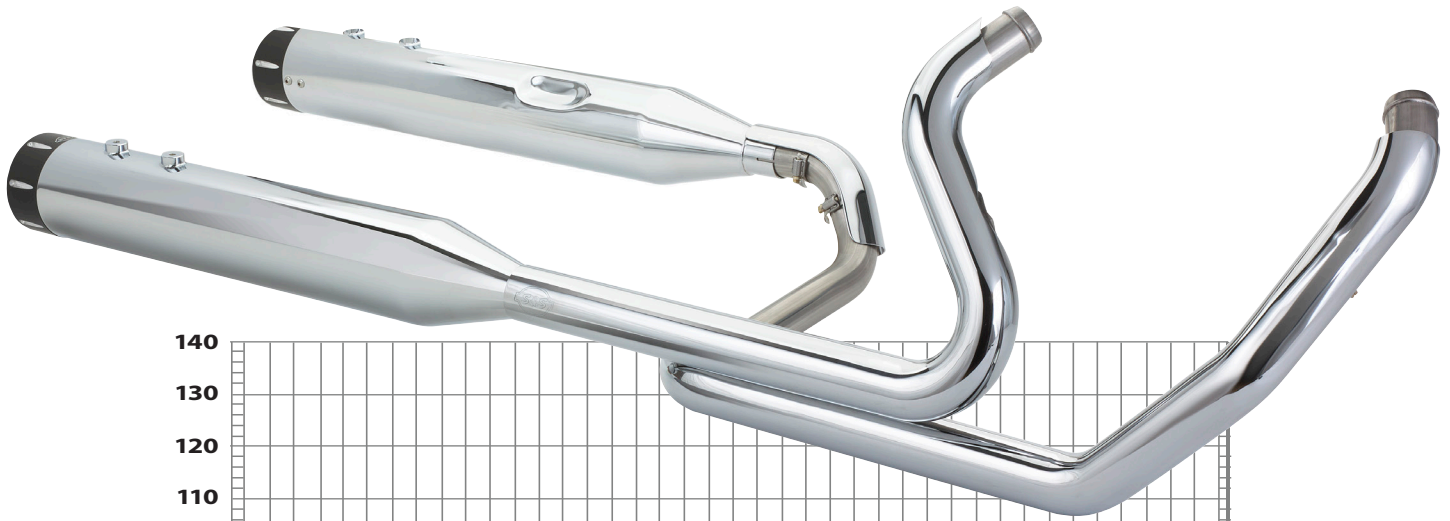
- 2017–2019 Harley-Davidson® touring models
- 2009–2016 Harley-Davidson touring models

Features & Benefits:

- Improved power and torque
- Deep bass rumble throughout the RPM range
- Stainless steel header construction
- Includes adapters for OE or wide band O2 sensors
- O2 sensor location same as stock
- High Flow Cats increase exhaust flow for optimum torque
- Catalysts located in mufflers moves heat away from rider
- Show chrome or ceramic black finish
- Black Highlight Machined Thruster and Tracer, as well as Chrome Tracer tip options
- Made in USA!



NOTES Not recommended for Tri Glide® or other three wheel models including conversion due to ground clearance.





Chrome w/Thruster



Chrome w/Tracer



Black w/Thruster



Black w/Tracer



Chrome w/Chrome Tracer

EL DORADO EXHAUST SYSTEM FOR 2017–2019 TOURING MODELS — STREET LEGAL *PERFORMANCE CATS*

FINISH	END CAP	S&S PART#	DRAG PART #	MSRP
Chrome	Black Highlight Machined Thruster	550-0699B	1800-2457	\$1,349.95
Chrome	Black Highlight Machined Tracer	550-0701B	1800-2459	\$1,349.95
Black	Black Highlight Machined Thruster	550-0700B	1800-2458	\$1,449.95
Black	Black Highlight Machined Tracer	550-0702B	1800-2460	\$1,449.95
Chrome	Chrome Tracer	550-0851	1800-2461	\$1,349.95

EL DORADO EXHAUST SYSTEM FOR 2009–2016 TOURING MODELS — STREET LEGAL *PERFORMANCE CATS*

FINISH	END CAP	S&S PART #	DRAG PART #	MSRP
Chrome	Black Highlight Machined Thruster	550-0677A	1800-2188	\$1,349.95
Chrome	Black Highlight Machined Tracer	550-0678A	1800-2189	\$1,349.95
Black	Black Highlight Machined Thruster	550-0679A	1800-2190	\$1,449.95
Black	Black Highlight Machined Tracer	550-0680A	1800-2191	\$1,449.95

Exempt from emissions tampering regulations under CARB EO# K-010-10 for all 2017-2019 FL Touring Models

Exempt from emissions tampering regulations under CARB EO# K-010 for all 2007-2016 FL touring models

⚠ WARNING: Cancer and Reproductive Harm — www.P65Warnings.ca.gov



SIDEWINDER 2:1

CARB compliant

touring exhaust system

Fits:

- 2017–2021 HD® touring models
- 2007–2016 HD touring models

Features & Benefits:

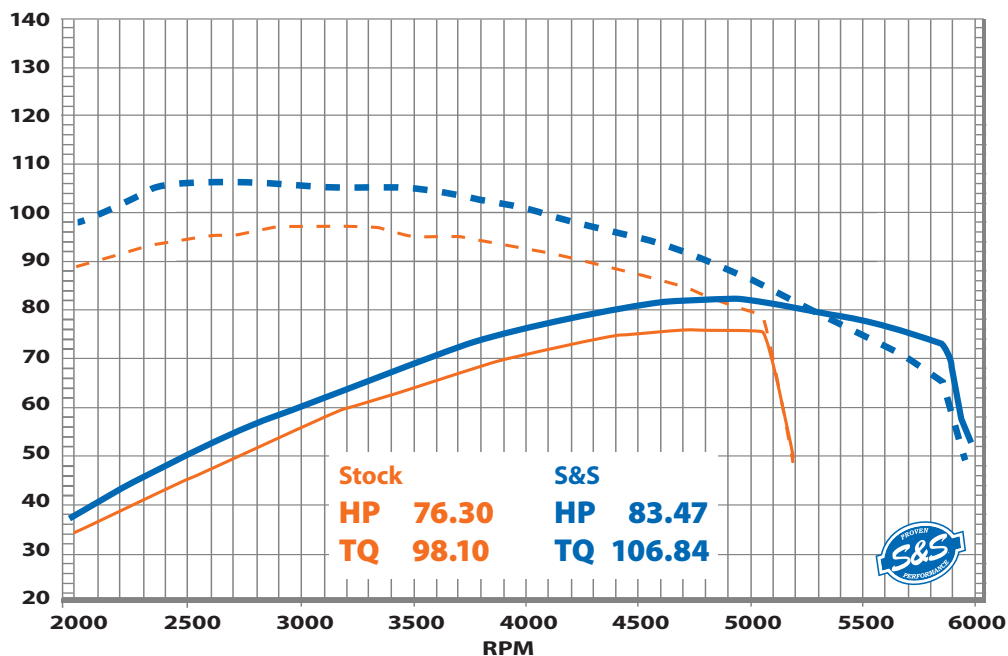
- 2:1 styling for high-performance baggers
- Stainless steel stepped header
- High-flow cat
- Increased power and torque
- Available in show chrome or ceramic black finish
- Machined aluminum end cap
- Includes adapters that allow use of wide band or stock O2 sensors
- Deep 2:1 performance exhaust note
- Removable dB reducer
- Made in USA!



Removable dB reducer



Not recommended for Tri Glide® or other three wheel models including conversion due to ground clearance.





See page 6 for Left Side Shadow Pipe

SIDEWINDER 2:1 EXHAUST SYSTEM FOR 2017–2020 TOURING MODELS — STREET LEGAL[†] PERFORMANCE CAT

FINISH	S&S PART #	DRAG PART #	MSRP
Chrome	550-0758C	1800-2488	\$1,249.95
Black	550-0759C	1800-2487	\$1,099.95

SIDEWINDER 2:1 EXHAUST SYSTEM FOR 2017–2021 TOURING MODELS — RACE ONLY^{††}

Chrome	550-0728	1800-2270	\$1,099.95
Black	550-0729	1800-2271	\$999.95

SIDEWINDER 2:1 EXHAUST SYSTEM FOR 2007–2016 TOURING MODELS — STREET LEGAL[†] PERFORMANCE CAT

FINISH	S&S PART #	DRAG PART #	MSRP
Chrome	550-0771A	1800-2387	\$999.95
Black	550-0772A	1800-2388	\$974.95

SIDEWINDER 2:1 EXHAUST SYSTEM FOR 1995–2016 TOURING MODELS — RACE ONLY^{††}

Chrome	550-0776	1800-2389	\$1,099.95
Black	550-0777	1800-2390	\$999.95

[†]Exempt from emissions tampering regulations under CARB EO# K-010-14 for all 2017-2020 FL Touring Models

^{††}DISCLAIMER: NOT LEGAL FOR SALE OR USE IN CALIFORNIA ON ANY POLLUTION CONTROLLED MOTOR VEHICLE. NOT LEGAL FOR SALE OR USE NATIONWIDE ON ANY FEDERAL POLLUTION CONTROLLED MOTOR VEHICLE UNDER THE CLEAN AIR ACT

[†]Exempt from emissions tampering regulations under CARB EO# K-010-3 for all 2007-2016 FL touring models

^{††}DISCLAIMER: NOT LEGAL FOR SALE OR USE IN CALIFORNIA ON ANY POLLUTION CONTROLLED MOTOR VEHICLE. Not legal for sale or use on EPA pollution controlled vehicles originally equipped with catalyst. *Qualified manufacturer declared emissions replacement part on FL touring models listed below:

California Models: Fuel Injected Non-CVO FL Touring Model Years: 1995-2003 and 2007. CVO FL Touring Model Years: 2000-2003
49 State Models: Fuel Injected Non-CVO FL Touring Model Years: 1995-2005 and 2007-2009. CVO FL Touring Model Years: 2000-2005

 WARNING: Cancer and Reproductive Harm — www.P65Warnings.ca.gov



SHADOW PIPE

for 1995–2021 touring models with S&S Sidewinder® 2:1 Exhaust

Features & Benefits:

- Show chrome and ceramic black finish
- Shadow muffler fills left side cutout in extended bags when running Sidewinder 2:1
- Matching end cap for left side is a mirror image of right side Sidewinder 2:1 Cap (not available on any of our slip-on or El Dorado products)
- 4.5" design
- All hardware included
- Made in USA!



2009–2021 TOURING MODELS EQUIPPED WITH S&S® SIDEWINDER 2:1 EXHAUST

FINISH	S&S PART #	DRAG PART #	MSRP
Chrome	550-0829	1861-1390	\$399.95
Black	550-0831	1861-1391	\$399.95

1995–2008 TOURING MODELS EQUIPPED WITH S&S® SIDEWINDER 2:1 EXHAUST

Chrome	550-0828	1861-1392	\$429.95
Black	550-0830	1861-1393	\$429.95

if you have...

BIKE	FINISH	SIDEWINDER PART #		...you'll need	
		S&S / DRAG		SHADOW PIPE PART #	S&S / DRAG
2017–2021 touring	Chrome	550-0728 / 1800-2270		550-0829 / 1861-1390	
2017–2021 touring	Chrome	550-0758C / 1800-2362		550-0829 / 1861-1390	
2017–2021 touring	Black	550-0729 / 1800-2271		550-0831 / 1861-1391	
2017–2021 touring	Black	550-0759C / 1800-2363		550-0831 / 1861-1391	
2009–2016 touring	Chrome	550-0776 / 1800-2389		550-0829 / 1861-1390	
2009–2016 touring	Chrome	550-0771A / 1800-2387		550-0829 / 1861-1390	
2009–2016 touring	Black	550-0777 / 1800-2390		550-0831 / 1861-1391	
2009–2016 touring	Black	550-0772A / 1800-2388		550-0831 / 1861-1391	
1995–2008 touring	Chrome	550-0776 / 1800-2389		550-0828 / 1861-1392	
1995–2008 touring	Chrome	550-0771A / 1800-2387		550-0828 / 1861-1392	
1995–2008 touring	Black	550-0777 / 1800-2390		550-0830 / 1861-1393	
1995–2008 touring	Black	550-0772A / 1800-2388		550-0830 / 1861-1393	



GNX SLIP-ON MUFFLERS

for 2017–2021 M8 touring models

Features & Benefits:

- 4.5" slip-on with premium fit, finish, sound, and power!
- Show quality chrome or OEM exact match black
- New, unique louvered baffle delivers a rowdier tone
- Removable dB reducer
- Clears up to 13.5" shock lengths
- Made in USA!



GNX SLIP-ON MUFFLERS FOR 2017–2021 TOURING MODELS

FINISH	S&S PART #	DRAG PART #	MSRP
Black.....	550-0990.....	1801-1462.....	\$524.95
Chrome.....	550-0991.....	1801-1461.....	\$589.95



Not recommended for Tri Glide® or other three wheel models including conversion due to ground clearance.



*Qualified manufacturer declared U.S. 50-State legal emissions replacement part on all MY 2017–2021 FL Touring models

⚠ WARNING: Cancer and Reproductive Harm – www.P65Warnings.ca.gov



POWER TUNE® DUAL HEADERS

Fits:

- Replacement for the El Dorado M8 high performance exhaust system for touring models
- 1995–2016 Non-catalyst equipped Harley-Davidson® touring models

Features & Benefits:

- Adds up to 8 horsepower over stock header pipes
- Independent dual look with hidden crossover
- Exclusive design moves the rear cylinder header away from the passenger to reduce radiated heat
- Full chrome or ceramic black heat shielding with 220° coverage
- Oxygen sensor bungs**
- Durable 16 gauge stainless steel construction
- Spherical inlet design for improved sealing and exhaust gasket durability
- Compatible with all equal size inlet slip-on mufflers
- Exhaust port gaskets included
- All hardware included
- Made in USA!



DISCLAIMER: NOT LEGAL FOR SALE OR USE IN CALIFORNIA ON ANY POLLUTION CONTROLLED MOTOR VEHICLE. NOT LEGAL FOR SALE OR USE NATIONWIDE ON ANY FEDERAL POLLUTION CONTROLLED MOTOR VEHICLE UNDER THE CLEAN AIR ACT

**DISCLAIMER: NOT LEGAL FOR SALE OR USE IN CALIFORNIA ON ANY POLLUTION CONTROLLED MOTOR VEHICLE. Not legal for sale or use on EPA pollution controlled vehicles originally equipped with catalyst. *Qualified manufacturer declared emissions 1995-2005 and 2007-2008. CVO FL Touring MY 2000-2005

***DISCLAIMER: NOT LEGAL FOR SALE OR USE IN CALIFORNIA ON ANY POLLUTION CONTROLLED MOTOR VEHICLE. Not legal for sale or use on EPA pollution controlled motorcycles originally equipped with a catalyst exhaust *Qualified Manufacturer



POWER TUNE® DUAL HEADERS FOR 2017–2021 TOURING MODELS

FINISH	S&S PART #	DRAG PART #	MSRP
Chrome	550-0704	1802-0390	\$559.95
Black	550-0705	1802-0391	\$669.95

POWER TUNE® DUAL HEADERS FOR 1995–2016 TOURING MODELS

FITS	FINISH	S&S PART #	DRAG PART #	MSRP
1995–2008** touring	Chrome	550-0003A††	1802-0382	\$559.95
	Black	550-0142A††	1802-0389	\$669.95
2009–2016 touring and 2009–2019 Tri Glide®i models..	Chrome	550-0004B†††	1802-0372	\$559.95
	Black	550-0143B†††	1802-0373	\$669.95

**Has 18mm sensor fittings in the stock locations for 2007–2008 bikes. If not equipped with oxygen sensors, the ports can be used for tuning. Plugs are included if ports are not used.
†Requires the Pipe Extension Adaptor Kit, part # 550-0799 / 1802-0395



550-0799 / 1802-0395
 trike adaptor
 MSRP / \$74.95

This part is emissions compliant only when used as part of a complete El Dorado exhaust package.

ions replacement part on FL touring models listed below. California Models: FL Touring Fuel Injected MY 1995–2003, and 2007. CVO FL Touring MY 2000–2003. 49 State Models: FL Touring Carbureted MY 1995–2005. FL Touring Fuel Injected MY

Declared Emissions Compliant Part for 2009 Harley-Davidson 49-State Non-CVO FL Touring Models Only

 **WARNING:** Cancer and Reproductive Harm – www.P65Warnings.ca.gov



Mk45 SLIP-ON MUFFLERS

Fits:

- 2017–2021 Harley-Davidson® touring models (*Does not fit trike models*)
- 1995–2016 Harley-Davidson touring models

Features &

- Choose from S&S® Thruster or Tracer end cap designs in chrome or black
- Performance 2.5" stainless steel perforated baffle
- RaceTEX cartridge packing
- 50-state legal on most models
- Removable dB reducer
- Made in USA!



Removable dB reducer



Not recommended for Tri Glide® or other three wheel models including conversion due to ground clearance.



Mk45 4.5" SLIP-ON MUFFLERS FOR 2017-2021 TOURING MODELS

MUFFLER FINISH	END CAP FINISH & STYLE	S&S PART #	DRAG PART #	MSRP
Chrome	Chrome Thruster	550-0665	1801-1074	\$699.95
Chrome	Black Highlight Machined Thruster	550-0664	1801-1075	\$699.95
Chrome	Chrome Tracer	550-0669	1801-1078	\$699.95
Chrome	Black Highlight Machined Tracer	550-0668	1801-1079	\$699.95
Black	Black Highlight Machined Thruster	550-0666	1801-1077	\$739.95
Black	Black Highlight Machined Tracer	550-0670	1801-1081	\$739.95

Mk45 4.5" TOURING MUFFLERS FOR 1995-2016 TOURING MODELS

MUFFLER FINISH	END CAP FINISH & STYLE	S&S PART #	DRAG PART #	MSRP
Chrome	Chrome Thruster	550-0620	1801-0846	\$699.95
Chrome	Black Highlight Machined Thruster	550-0619	1801-0847	\$699.95
Chrome	Chrome Tracer	550-0624	1801-0850	\$699.95
Chrome	Black Highlight Machined Tracer	550-0623	1801-0851	\$699.95
Black	Chrome Thruster	550-0622	1801-0848	\$769.95
Black	Black Highlight Machined Thruster	550-0621	1801-0849	\$739.95
Black	Chrome Tracer	550-0626	1801-0852	\$769.95
Black	Black Highlight Machined Tracer	550-0625	1801-0853	\$739.95



Chrome w/Chrome Thruster



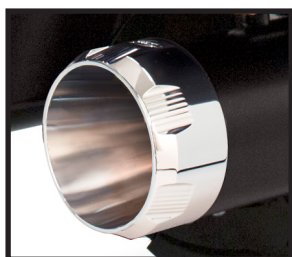
Chrome w/Machined Thruster



Chrome w/Chrome Tracer



Chrome w/Machined Tracer



Black w/Chrome Thruster



Black w/Machined Thruster



Black w/Chrome Tracer



Black w/Machined Tracer

*Qualified manufacturer declared U.S. 50-State legal emissions replacement part on all MY 2017-2021 FL Touring models

DISCLAIMER: NOT LEGAL FOR SALE OR USE IN CALIFORNIA ON ANY POLLUTION CONTROLLED MOTOR VEHICLES. Not legal for sale or use on EPA pollution controlled motorcycles originally equipped with mufflers containing catalyst. *Qualified Manufacturer Declared Emissions Replacement Part on the FL Touring Models Listed Below. California FL Touring Models: Fuel Injected MY 1995-2003, 2007, and 2009-2016; CVO MY 2000-2003, and 2009-2016. 49 State FL touring Models: Carbureted MY 1995-2005; Fuel Injected MY 1995-2005, and 2007-2016; CVO MY 2000-2005, and 2009-2016.

⚠ WARNING: Cancer and Reproductive Harm – www.P65Warnings.ca.gov



GRAND NATIONAL®

slip-on mufflers

Fits:

- 2017–2021 FLH touring models
- 1995–2016 Harley-Davidson® touring models with non-catalyst mufflers
- 2009–2021 trike models

Features & Benefits:

- Show quality chrome or ceramic black finish
- Race inspired Grand National end cap
- High flow louvered tube baffle
- Aggressive sound & excellent HP
- Removable dB reducer
- Made in USA!



Removable dB reducer

GRAND NATIONAL® 4" MUFFLERS FOR 2017–2021 TOURING MODELS EXCEPT TRIKE MODELS (SEE CHART BELOW)

FINISH	S&S PART #	DRAG PART #	MSRP
Chrome	550-0693	1801-1203	\$499.95
Black	550-0694	1801-1204	\$539.95

GRAND NATIONAL® 4" MUFFLERS FOR 1995–2016 TOURING MODELS & 2009–2021 TRIKE MODELS

FINISH	S&S PART #	DRAG PART	MSRP
Chrome	550-0689	1801-1205	\$499.95
Black	550-0690	1801-1206	\$539.95



*Qualified manufacturer declared U.S. 50-State legal emissions replacement part on all MY 2017-2021 FL Touring models

DISCLAIMER: NOT LEGAL FOR SALE OR USE IN CALIFORNIA ON ANY POLLUTION CONTROLLED MOTOR VEHICLES. Not legal for sale or use on EPA pollution controlled motorcycles originally equipped with mufflers containing catalyst. *Qualified manufacturer declared emissions replacement part on the FL touring models listed below.
 California FL Touring Models: Fuel Injected MY 1995-2003, 2007, and 2009-2016; CVO MY 2000-2003, and 2009-2016;
 49 State FL touring Models: Carbureted MY 1995-2005; Fuel Injected MY 1995-2005, and 2007-2016; CVO MY 2000-2005, and 2009-2016

WARNING: Cancer and Reproductive Harm – www.P65Warnings.ca.gov

SLASH CUT

slip-on mufflers

Fits:

- 2017–2021 FLH touring models
- 1995–2016 Harley-Davidson® touring models with non-catalyst mufflers
- 2009–2021 trike models

Features & Benefits:

- Show quality chrome or ceramic black finish
- Economical price
- High flow louvered tube baffle
- Aggressive sound & excellent HP
- Excellent clearance on trike models
- Removable dB reducer
- Made in USA!



Removable dB reducer



SLASH CUT 4" TOURING MUFFLERS FOR 2017–2021 TOURING MODELS EXCEPT TRIKE MODELS (SEE CHART BELOW)

FINISH	S&S PART #	DRAG PART #	MSRP
Chrome	550-0695	1801-1207	\$459.95
Black	550-0696	1801-1208	\$499.95

SLASH CUT 4" TOURING MUFFLERS FOR 1995–2016 BIG TWINS AND 2009–2021 TRIKE MODELS

FINISH	S&S PART #	DRAG PART #	MSRP
Chrome	550-0691	1801-1209	\$459.95
Black	550-0692	1801-1210	\$499.95



*Qualified manufacturer declared U.S. 50-State legal emissions replacement part on all MY 2017–2021 FL Touring models

DISCLAIMER: NOT LEGAL FOR SALE OR USE IN CALIFORNIA ON ANY POLLUTION CONTROLLED MOTOR VEHICLES. Not legal for sale or use on EPA pollution controlled motorcycles originally equipped with mufflers containing catalyst.

*Qualified manufacturer declared emissions replacement part on the FL touring models listed below.

- California FL Touring Models:
- Fuel Injected MY 1995–2003, 2007, and 2009–2016
- CVO MY 2000–2003, and 2009–2016
- 49 State FL touring Models:
- Carbureted MY 1995–2005
- Fuel Injected MY 1995–2005, 2007–2016
- CVO MY 2000–2005, and 2009–2016

⚠ WARNING: Cancer and Reproductive Harm – www.P65Warnings.ca.gov



SUPERSTREET 2:1 EXHAUST SYSTEM

for 2018–2021 HD® Softail® models

Fits:

- 2018–2021 HD® Street Bob®, Low Rider®, Softail Slim®, Fat Bob®, Deluxe, Sport Glide® & Heritage® models
- 2018–2021 HD® Softail® Fat Boy®, Breakout® & FXDR® models

Features & Benefits:

- Classic 2:1 styling
- Fits floorboard and forward controls and fits mid mounts with S&S brake pedal kit (part #560-0259A / 1861-1493 for \$162.95)
- Saddlebag support compatible! Works with OEM and similar size saddlebags (like Heritage® or Sport Glide® models)
- Stainless steel stepped header construction
- Available in show quality chrome or ceramic black finish
 >> and now Stainless Steel Muffler & Shields
- Passenger peg bracket included (Fat Boy, FXDR & Breakout version. All others use OE Heritage location)
- Removable dB reducer included (Race only version)
- Made in the USA!



Brake pedal kit

>> Stainless Steel >>



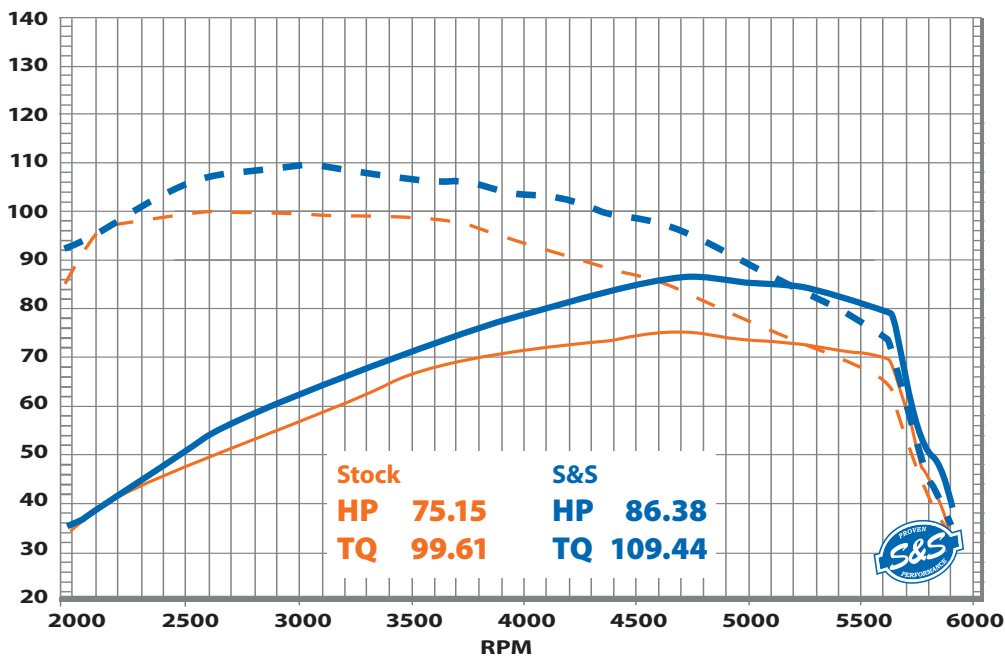
SUPERSTREET 2:1 EXHAUST SYSTEM — STREET LEGAL* PERFORMANCE CAT

FITS.....	FINISH	S&S PART #	DRAG PART #	MSRP
2018–'20 HD® Street Bob®, Low Rider®, Softail Slim®, Fat Bob®, Deluxe, Sport Glide® & Heritage® models®	Stainless Steel.....	550-0996B	1800-2520	\$1,349.95
	Black.....	550-0789B.....	1800-2483	\$999.95
	Chrome.....	550-0791B.....	1800-2484	\$1,349.95
2018–'20 HD® Softail® Fat Boy®, Breakout® & FXDR® models.....	Black.....	550-0846B	1800-2485	\$1,074.95
	Chrome.....	550-0847B.....	1800-2486	\$1,299.95

SUPERSTREET 2:1 EXHAUST SYSTEM — RACE ONLY†

FITS.....	FINISH	S&S PART #	DRAG PART #	MSRP
2018–'21 HD Street Bob, Low Rider, Softail Slim, Fat Bob, Deluxe, Sport Glide & Heritage models.....	Black.....	550-0788	1800-2401	\$899.95
	Chrome.....	550-0790	1800-2400	\$999.95
2018–'21 HD Softail Fat Boy, Breakout & FXDR models	Black.....	550-0857	1800-2467	\$974.95
	Chrome.....	550-0858	1800-2468	\$1,074.95

BRAKE PEDAL KIT..... 560-0259A..... 1861-1493 \$162.95



*Exempt from emissions tampering regulations under CARB EO# K-010-13 for all 2018-2020 Softail models

†DISCLAIMER: FOR CLOSED COURSE COMPETITION USE ONLY. NOT INTENDED FOR STREET USE. LEGAL IN CALIFORNIA ONLY FOR RACING VEHICLES WHICH MAY NEVER BE USED, OR REGISTERED OR LICENSED FOR USE, UPON A HIGHWAY. NOT LEGAL FOR SALE OR USE NATIONWIDE ON ANY FEDERAL POLLUTION CONTROLLED MOTOR VEHICLE UNDER THE CLEAN AIR ACT.

⚠ WARNING: Cancer and Reproductive Harm – www.P65Warnings.ca.gov



GRAND NATIONAL® 2:2 EXHAUST SYSTEM

for 2018–2021 HD® Street Bob®, Low Rider®, Slim®, Fat Bob®, & Deluxe Models



Features & Benefits:

- 2:2 Free-flow design equals solid HP gains
- Fits floorboard and forward controls and fits mid mounts with brake pedal kit
- Hidden crossover provides performance benefits of 2:1
- Stainless steel header construction
- Available in chrome or ceramic black finish
- Removable dB reducer included (*Race only version*)
- Right side passenger peg relocation bracket
- Made in USA!



GRAND NATIONAL® 2:2 EXHAUST SYSTEM FOR 2018–2019 MODELS — STREET LEGAL[†] PERFORMANCE CAT

FINISH	S&S PART #.....	DRAG PART # ..	MSRP
Chrome	550-0816A.....	1800-2442.....	\$999.95
Black.....	550-0815A.....	1800-2443.....	\$999.95

GRAND NATIONAL® 2:2 EXHAUST SYSTEM FOR 2018–2021 MODELS — RACE ONLY^{††}

FINISH	S&S PART #.....	DRAG PART # ..	MSRP
Chrome	550-0761.....	1800-2367.....	\$999.95
Black.....	550-0760.....	1800-2366.....	\$999.95

BRAKE PEDAL KIT.....	560-0259A	1861-1493	\$162.95
PASSENGER PEG.....	550-0801	1861-1272	\$69.95



Brake pedal kit



Passenger Peg Relocation Bracket

[†]Exempt from emissions tampering regulations under CARB EO# K-010-7 for all 2018–2019 Softail Models

^{††}DISCLAIMER: NOT LEGAL FOR SALE OR USE IN CALIFORNIA ON ANY POLLUTION CONTROLLED MOTOR VEHICLE. NOT LEGAL FOR SALE OR USE NATIONWIDE ON ANY FEDERAL POLLUTION CONTROLLED MOTOR VEHICLE UNDER THE CLEAN AIR ACT

WARNING: Cancer and Reproductive Harm — www.P65Warnings.ca.gov

GRAND NATIONAL® MUFFLERS

for 2018–2021 HD® Fat Bob® models

Features & Benefits:

- Up to 12% more horsepower and 6% more torque (when used with Stealth Air Cleaner Kit)
- Race inspired design
- Ceramic black finish
- Deep performance rumble
- No mapping required
- Removable dB reducer
- Made in USA!



Removable dB reducer



GRAND NATIONAL® SLIP-ON MUFFLERS

Black550-0734 1801-1234\$449.95

*Qualified manufacturer declared U.S. 50-State legal emissions replacement part on all MY 2018-2021 Fat Bob models.

⚠ WARNING: Cancer and Reproductive Harm – www.P65Warnings.ca.gov



GRAND NATIONAL® MUFFLERS

for 2018–2021 Softail® models except Fat Bob®, Sport Glide®, & FXDR® models



Features & Benefits:

- Race inspired Grand National end cap design
- Show chrome or black ceramic finish
- All hardware and gaskets included
- Deep performance rumble replaces stock whisper tone
- Made in USA!



GRAND NATIONAL MUFFLERS FOR 2018–2020 M8 SOFTAIL® MODELS — STREET LEGAL[†] PERFORMANCE CAT

FITSFINISHS&S PART #.....DRAG PART #MSRP

M8 HD Softail models: Street Bob®, Low Rider®, Slim®, Fat Boy®, & Breakout® models	Black	550-0754B	1801-1476	\$634.95
	Chrome	550-0755B	1801-1477	\$649.95
M8 HD Heritage Softail Classic & Softail Deluxe models...	Chrome	550-0757B	1801-1479	\$649.95

GRAND NATIONAL MUFFLERS FOR 2018–2021 M8 SOFTAIL® MODELS — RACE ONLY^{††}

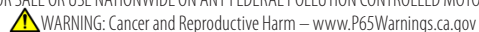
FITSFINISHS&S PART #.....DRAG PART #MSRP

M8 HD Softail models: Street Bob®, Low Rider®, Slim®, Fat Boy®, & Breakout® models	Black.....	550-0737	1801-1360	\$449.95
	Chrome.....	550-0738.....	1801-1361	\$449.95
M8 HD Heritage Softail Classic & Softail Deluxe models...	Chrome.....	550-0740.....	1801-1362	\$449.95



[†]Exempt from emissions tampering regulations under CARB EO# K-010-16 for all 2018-2020 Breakout, Fat Boy, Low Rider, Slim, Street Bob, Deluxe, and Heritage Classic Softail Models

^{††}DISCLAIMER: NOT LEGAL FOR SALE OR USE IN CALIFORNIA ON ANY POLLUTION CONTROLLED MOTOR VEHICLE. NOT LEGAL FOR SALE OR USE NATIONWIDE ON ANY FEDERAL POLLUTION CONTROLLED MOTOR VEHICLE UNDER THE CLEAN AIR ACT



SLASH CUT MUFFLERS

for 2018–2021 Softail® models except Fat Bob®, Sport Glide®, & FXDR® models



Features & Benefits:

- Classic Slash Cut styling
- Show chrome or black ceramic finish
- All hardware and gaskets included
- Deep performance rumble replaces stock whisper tone
- Made in USA!



SLASH CUT MUFFLERS FOR 2018–2019 M8 SOFTAIL® MODELS — STREET LEGAL[†] PERFORMANCE CAT

FITS.....FINISH S&S PART #.....DRAG PART # MSRP

M8 HD Softail models: Street Bob®, Low Rider®, Slim®, Fat Boy®, & Breakout® models.....	Black.....	550-0752B	1801-2425	\$634.95
	Chrome.....	550-0753B	1801-1475	\$649.95
M8 HD Heritage Softail Classic & Softail Deluxe models...Chrome		550-0756B	1801-1478	\$649.95

SLASH CUT MUFFLERS FOR 2018–2021 M8 SOFTAIL® MODELS — RACE ONLY^{††}

FITS.....FINISH S&S PART #.....DRAG PART # MSRP

M8 HD Softail models: Street Bob®, Low Rider®, Slim®, Fat Boy®, & Breakout® models.....	Black.....	550-0735	1801-1354	\$374.95
	Chrome.....	550-0736	1801-1355	\$374.95
M8 HD Heritage Softail Classic & Softail Deluxe models...Chrome.....		550-0739	1801-1356	\$374.95



[†]Exempt from emissions tampering regulations under CARB EO# K-010-16 for all 2018–2020 Breakout, Fat Boy, Low Rider, Slim, Street Bob, Deluxe, and Heritage Classic Softail Models

^{††}DISCLAIMER: NOT LEGAL FOR SALE OR USE IN CALIFORNIA ON ANY POLLUTION CONTROLLED MOTOR VEHICLE. NOT LEGAL FOR SALE OR USE NATIONWIDE ON ANY FEDERAL POLLUTION CONTROLLED MOTOR VEHICLE UNDER THE CLEAN AIR ACT

⚠ WARNING: Cancer and Reproductive Harm – www.P65Warnings.ca.gov



SUPERSTREET 2:1 EXHAUST SYSTEM

for 2007–2020 xl models

Fits:

- 2014–2020 xl models with forward or mid controls
- 2007–2013 xl models with forward or mid controls *(does not fit XR models)*

Features & Benefits:

- Classic 2:1 styling
- Fits forward and mid controls
- Durable high temperature black finish
- Stainless steel stepped header construction
- Oxygen sensor ports allow use of wide band or stock O2 sensors
- Made in USA!

SUPERSTREET 2:1 EXHAUST SYSTEM

FITS	S&S PART #	DRAG PART #	MSRP
2014–'20 Sportster® models ..	550-0952A	1800-2478.....	\$849.95
2007–'13 Sportster models	550-0951*	1800-2477	\$699.95
<i>(does not fit XR models)</i>			



Removable dB reducer



†Exempt from emissions tampering regulations on all 2014–2020 Sportster models under CARB EO# K-010-12

*Qualified manufacturer declared U.S. 50-State legal emissions replacement part on all MY 2007–2013 Sportster models

 WARNING: Cancer and Reproductive Harm – www.P65Warnings.ca.gov

GRAND NATIONAL® 4" SLIP-ON MUFFLERS

for 2014–2021 HD® Street® XG750, XG500, & Street Rod™

Features & Benefits:

- 10% increase in HP & torque
(when used with Stealth Air Cleaner Kit)
- Race inspired sound & stainless steel baffle
- Ceramic black finish matches stock header pipe
- Removable dB reducer
- Made in USA!



GRAND NATIONAL® 4" SLIP-ON 2014–2021 HD® STREET® XG750, XG500 & STREET ROD™

FINISH S&S PART # DRAG PART # MSRP

Black550-0703 1801-1169.....\$299.95



Removable dB reducer



*Qualified Manufacturer Declared Emissions Replacement Part on all 2014–2021 Street Models

⚠ WARNING: Cancer and Reproductive Harm – www.P65Warnings.ca.gov



GRAND NATIONAL® 2:2 EXHAUST SYSTEM

for Dyna® models

Fits:

- 2006–2017 Dyna models

Features & Benefits:

- 2:2 Free-flow design equals solid HP gains
- Hidden crossover provides performance benefits of 2:1
- Stainless steel header construction
- Available in chrome or ceramic black finish
- Right side passenger peg relocation bracket available
- Removable dB reducers
- Made in USA!



GRAND NATIONAL® 2:2 EXHAUST SYSTEM FOR 2006–2007 DYNA® MODELS* NON-CATALYZED

FINISH	S&S PART #.....	DRAG PART #	MSRP
Chrome	550-0743	1800-2282	\$999.95
Black	550-0742	1800-2283	\$999.95

GRAND NATIONAL® 2:2 EXHAUST SYSTEM FOR 2008–2017 DYNA® MODELS — RACE ONLY

Chrome	550-0743	1800-2282	\$999.95
Black	550-0742	1800-2283	\$999.95

PASSENGER PEG..... 550-08011861-1272



Passenger Peg Relocation Bracket



Removable dB reducer

DISCLAIMER: NOT LEGAL FOR SALE OR USE IN CALIFORNIA ON ANY POLLUTION CONTROLLED MOTOR VEHICLES. NOT LEGAL FOR SALE OR USE ON EPA POLLUTION CONTROLLED MOTORCYCLES ORIGINALLY EQUIPPED WITH MUFFLERS CONTAINING CATALYST.

*Qualified Manufacturer Declared Emissions Replacement Part on the Dyna® Models Listed Below. California Models: MY 2006-2007, Except CVO® models. 49 State Models: MY 2006-2009, Except CVO models

⚠ WARNING: Cancer and Reproductive Harm — www.P65Warnings.ca.gov

GRAND NATIONAL® SLIP-ON MUFFLERS

for Dyna® models

Fits:

- 1995–2009 Dyna models with staggered exhaust
- 2008–2017 Dyna models with 2-1-2 exhaust
(2008–2017 Fat Bob®, 2010–2017 Wide Glide®, & 2017 Low Rider® S models)

Features & Benefits:

- Up to 17% more horsepower and 9% more torque
(when used with Stealth Air Cleaner Kit)
- Show chrome or ceramic black finish
- Deep performance rumble
- Made in USA!



GRAND NATIONAL® MUFFLERS FOR 1995–2009 DYNA® MODELS WITH STAGGERED EXHAUST†

FINISH	S&S PART #	DRAG PART #	MSRP
Chrome	550-0719	1801-1275	\$419.95
Black	550-0721	1801-1276	\$449.95

GRAND NATIONAL MUFFLERS FOR 2008–2017 DYNA® MODELS WITH 2-1-2 EXHAUST††

FINISH	S&S PART #	DRAG PART #	MSRP
Chrome	550-0723	1801-1277	\$419.95
Black	550-0725	1801-1278	\$449.95



Removable dB reducer

SLASH CUT SLIP-ON MUFFLERS for Dyna® models

Fits:

- 1995–2009 Dyna models with staggered exhaust
- 2008–2017 Dyna models with 2-1-2 exhaust

Features & Benefits:

- Up to 16% more horsepower and 10% more torque
(when used with Stealth Air Cleaner Kit)
- Wake up your bike without breaking your budget
- Classic slash cut styling
- Show chrome or ceramic black finish
- Made in USA!



SLASH CUT MUFFLERS FOR 1995–2009 DYNA® MODELS WITH STAGGERED EXHAUST†

FINISH	S&S PART #	DRAG PART #	MSRP
Chrome	550-0718	1801-1271	\$324.95

SLASH CUT MUFFLERS FOR 2008–2017 DYNA® MODELS WITH 2-1-2 EXHAUST††

FINISH	S&S PART #	DRAG PART #	MSRP
Black	550-0724	1801-1274	\$349.95



Removable dB reducer

†DISCLAIMER: NOT LEGAL FOR SALE OR USE IN CALIFORNIA ON ANY POLLUTION CONTROLLED MOTOR VEHICLES. Not legal for sale or use on EPA pollution controlled motorcycles originally equipped with mufflers containing catalyst. *Qualified Manufacturer Declared Emissions Replacement Part on the Dyna Models Listed Below. California Models: MY 2006–2007, Except CVO models. 49 State Models: MY 1995–2009, Except CVO models

††DISCLAIMER: NOT LEGAL FOR SALE OR USE IN CALIFORNIA ON ANY POLLUTION CONTROLLED MOTOR VEHICLES. Not legal for sale or use on EPA pollution controlled motorcycles originally equipped with mufflers containing catalyst. *Qualified Manufacturer Declared Emissions Replacement Part on the Dyna Models Listed Below. California Models: Fat Bob MY 2008, 2010–2017; Wide Glide MY 2010–2017; Low Rider S MY 2017. 49 State Models: Fat Bob MY 2008–2017; Wide Glide MY 2010–2017; Low Rider S MY 2017



WARNING: Cancer and Reproductive Harm — www.P65Warnings.ca.gov



GRAND NATIONAL® 2:2 HIGH

for Indian® FTR 1200®



Features & Benefits:

- S&S domination of American Flat Track series championship now available for FTR 1200
- True race replica system has same 3.5" can and Grand National end cap design styling as mighty FTR 750 racers
- Features S&S engineered high flow catalytic converters that bring legal performance to the street!
- Header and muffler heat shields protect rider from excessive heat
- Made in the USA!

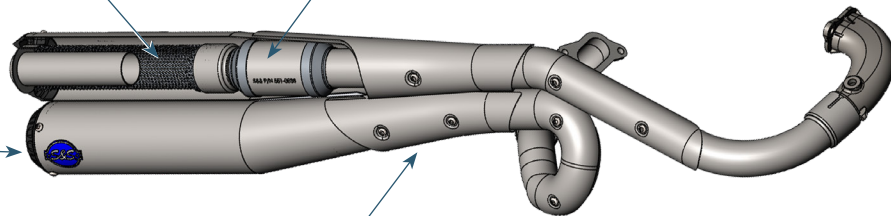


Stainless Steel perforated core baffle wrapped in fiberglass for a stealthy exhaust note

High Flow Cats Bring Legal Performance to the Street

Race style Grand National end cap design

Multi Layer Heat Shields including 6mm Ceramic Thermal Barrier to Protect Rider from exhaust heat



GRAND NATIONAL® 2:2 HIGH FOR 2019–2020 INDIAN® FTR 1200® — STREET LEGAL PERFORMANCE CAT

FINISH S&S PART # DRAG PART MSRP

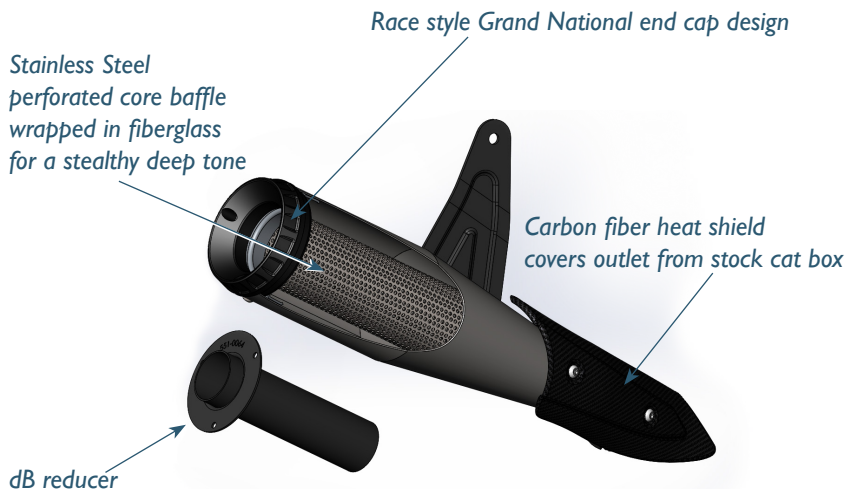
Stainless Steel550-0950B 1810-2853 \$1,874.95

GRAND NATIONAL® SLIP-ON MUFFLER

for 2019–2021 Indian® FTR 1200®

Features & Benefits

- Stainless steel can with exposed tig welds for factory race styling
- Carbon fiber heat shield
- Race inspired Grand National end cap
- Removable dB reducer
- Made in USA!



GRAND NATIONAL® SLIP-ON FOR 2019–2021 INDIAN® FTR 1200®

FINISH S&S PART # DRAG PART # MSRP

Stainless Steel550-0854 1811-3798 \$449.95

*Qualified manufacturer declared U.S. 50-State legal emissions replacement part on all MY 2019-2021 FTR1200 models

⚠ WARNING: Cancer and Reproductive Harm – www.P65Warnings.ca.gov



**NEW
2021**



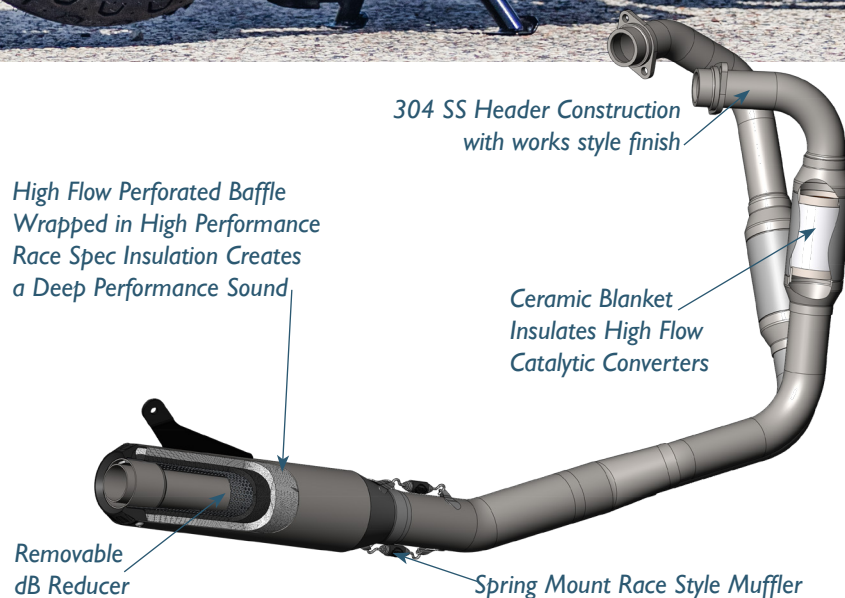
QUALIFIER 2:1 EXHAUST SYSTEM

for Royal Enfield® 650 Twins

The Qualifier is an aggressively styled 2:1 race replica exhaust system built for 2019–2021 RE 650. Crafted from tig welded brushed stainless steel, it's as durable as it is good looking and sheds a full 28 lbs over the stock system. More importantly it bumps horsepower 12% and torque 7% while emitting a deep race note that's just as happy on the track as it is on the street.

Features & Benefits:

- Aggressive 2:1 race styling
- Shed 28 pounds while improving performance and sound
- 12% increase in peak hp and 7% increase in torque (when combined with S&S high flow air filter)
- Low mount 2:1 is easy to install
- Durable all stainless steel construction





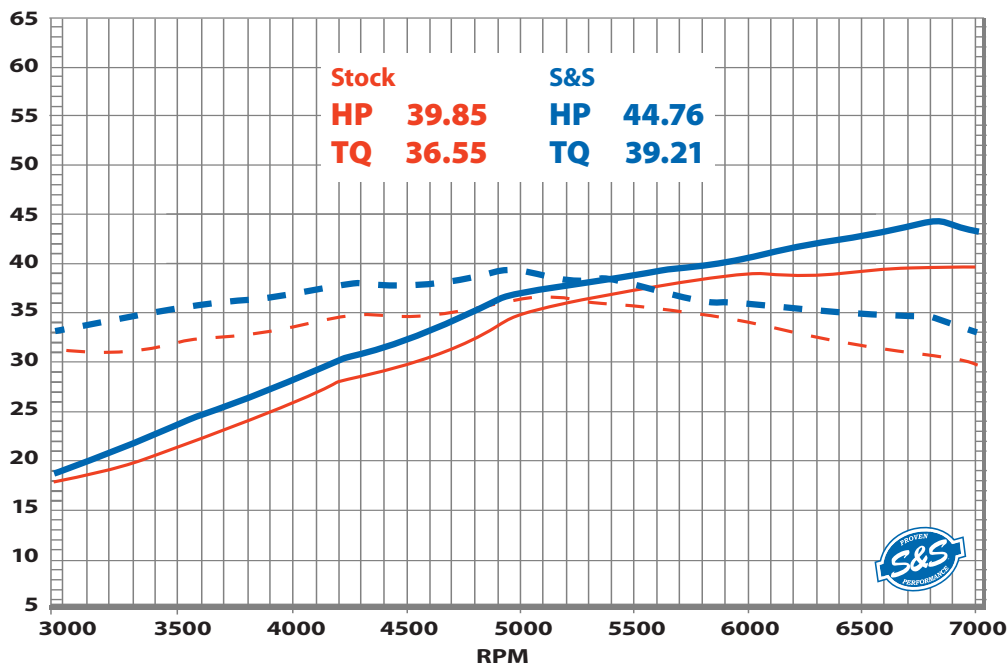
QUALIFIER 2:1 PERFORMANCE EXHAUST SYSTEM—49 STATE

FINISH S&S PART # DRAG PART # MSRP

Stainless Steel 550-1029 1810-2850 \$849.95

QUALIFIER 2:1 PERFORMANCE EXHAUST SYSTEM—RACE ONLY

Stainless Steel 550-1031 1810-2851 \$849.95



DISCLAIMER: NOT LEGAL FOR SALE OR USE IN CALIFORNIA ON ANY POLLUTION CONTROLLED MOTOR VEHICLE *Qualified Manufacturer Declared 49-State Federal Emissions Compliant Catalyst Exhaust System
 DISCLAIMER: FOR CLOSED COURSE COMPETITION USE ONLY. NOT INTENDED FOR STREET USE. LEGAL IN CALIFORNIA ONLY FOR RACING VEHICLES WHICH MAY NEVER BE USED, OR REGISTERED OR LICENSED FOR USE, UPON A HIGHWAY. NOT LEGAL FOR SALE OR USE NATIONWIDE ON ANY FEDERAL POLLUTION CONTROLLED MOTOR VEHICLE UNDER THE CLEAN AIR ACT.

WARNING: Cancer and Reproductive Harm – www.P65Warnings.ca.go

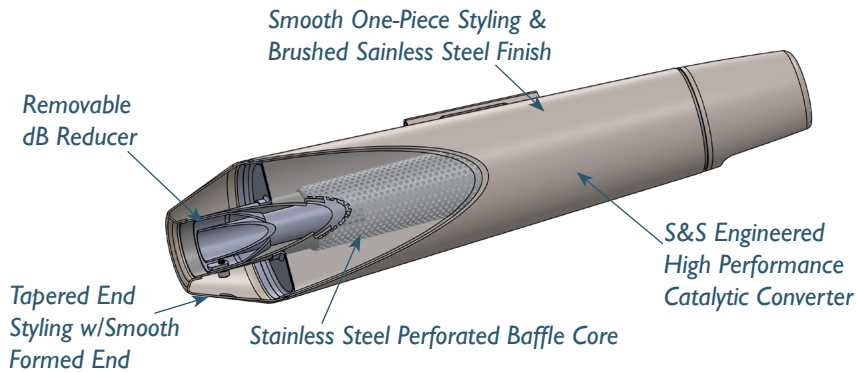


TAPERED CONE SLIP-ON MUFFLERS

for Royal Enfield® 650 Twins

Features & Benefits:

- Improved horsepower & torque
- Brushed stainless steel finish
- Removable dB reducer
- Deep performance exhaust note
- Durable, all stainless steel construction
- Stock 22.4 lbs (10.1 kg)
Street 10.8 lbs (4.9 kg)
- Available exclusively through Royal Enfield dealers in North America



TAPERED CONE SLIP-ON MUFFLER — STREET LEGAL *PERFORMANCE CAT*

FINISH S&S PART # DRAG PART # MSRP

Stainless Steel (*RE Exclusive*) Available exclusively through Royal Enfield dealers in North America.... \$674.95



EC GRAND NATIONAL® SLIP-ON MUFFLERS

for Indian® FTR 1200® models in Europe

- EC approved with S&S performance and style
- Race-inspired Grand National end cap design
- All hardware and gaskets included
- Made in USA



GRAND NATIONAL® EC SLIP-ON FOR 2019–2020 INDIAN® FTR 1200®

FINISH S&S PART # DRAG PART # MSRP

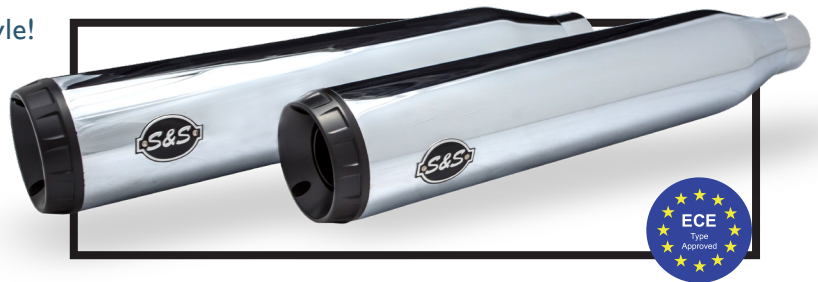
Stainless Steel550-0962 1801-1433 \$499.95

EU Type-Approval: e9*134/2014*2018/295G*11033*00

ECE GRAND NATIONAL® SLIP-ON MUFFLERS

2014–2020 Sportster® models with forward or mid controls

- ECE approved with S&S performance & style!
- Race inspired Grand National end cap design
- Available in show chrome or new, more durable Guardian Black finish
- New gaskets included for trouble free installation
- Made in USA!



GRAND NATIONAL® ECE SLIP-ON MUFFLERS FOR 2014–2020 XL MODELS WITH FORWARD OR MID CONTROLS

FINISH S&S PART # DRAG PART # MSRP

Black550-1001 1801-1463 \$839.95

Chrome550-1002 1801-1464 \$899.95

Approval E9*92R01/02*1003 for 2014– 2020 XI 883 and 1200



EC Mk45 SLIP-ON MUFFLERS

for 2017–2020 M8 models in Europe

- EC approved with S&S performance and style
- Bold 4.5" design — with stainless steel baffle and RaceTEX cartridge packing
- Choose from Thruster or Tracer end cap designs in chrome or black
- Performance 2.5" stainless steel perforated baffle
- Made in USA!



Chrome w/Chrome Thruster

Mk45 EC 4.5" SLIP-ON MUFFLERS FOR 2017–2020 TOURING MODELS

MUFFLER FINISH	END CAP FINISH & STYLE	S&S PART #	DRAG PART #	MSRP
Chrome	Chrome Thruster	550-0861	1801-1411	\$924.95
Chrome	Black Highlight Machined Thruster	550-0860	1801-1410	\$924.95
Chrome	Chrome Tracer	550-0864	1801-1414	\$924.95
Chrome	Black Highlight Machined Tracer	550-0863	1801-1413	\$924.95
Black	Black Highlight Machined Thruster	550-0862	1801-1412	\$924.95
Black	Black Highlight Machined Tracer	550-0865	1801-1415	\$924.95

EU Compliant per 11032 G

EC-Type Approval for non-original motorcycle noise abatement device



Chrome w/Machined Thruster



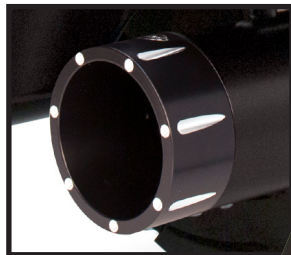
Chrome w/Chrome Tracer



Chrome w/Machined Tracer



Black w/Machined Thruster



Black w/Machined Tracer



EC GRAND NATIONAL® SLIP-ON MUFFLERS

for 2018–2020 M8 HD® Fat Bob® Softail® models in Europe

- EC approved with S&S performance & style
- Race-inspired Grand National® end cap design
- High temperature ceramic black finish
- 100mm can with perforated stainless steel baffle & RaceTex cartridge packing
- All hardware and gaskets included



GRAND NATIONAL® EC 100MM SLIP-ON FOR 2018–2020 HD® SOFTAIL® FAT BOB® MODELS

FINISH S&S PART # DRAG PART # MSRP

Black 550-0827 1801-1379 \$534.95

EU Type-Approval: e9*134/2014*2018/295G*11029*00

EC SLIP-ON MUFFLERS

for M8 Softail® models in Europe

- EC approved with S&S performance & style
- Race-inspired Grand National® end cap design or the classic slash cut design complements any bike style
- Show chrome or ceramic black finish
- 82mm can with perforated stainless steel baffle & RaceTex cartridge packing
- Equipped with S&S engineered high-flow catalytic converter
- All hardware and gaskets included



GRAND NATIONAL® EC SLIP-ON MUFFLERS FOR 2018–2020 M8 SOFTAIL® MODELS

FITS FINISH S&S PART # ... DRAG PART # MSRP

M8 Softail® Street Bob®, Low Rider®, Slim®, Fat Boy® & Breakout® models Black 550-0824 1801-1383 \$924.95

Chrome 550-0825 1801-1382 \$924.95

M8 Softail® Heritage Classic & Deluxe® models... Chrome 550-0826 1801-1380 \$924.95

EU Type-Approval: e9*134/2014*2018/295H*11028*00

SLASH CUT EC SLIP-ON MUFFLERS FOR 2018–2020 M8 SOFTAIL® MODELS

FITS FINISH S&S PART # ... DRAG PART # MSRP

M8 Softail® Street Bob®, Low Rider®, Slim®, Fat Boy® & Breakout® models Black 550-0821 1801-1385 \$874.95

Chrome 550-0822 1801-1384 \$874.95

M8 Softail® Heritage®/Deluxe® models Chrome 550-0823 1801-1381 \$874.95

EU Type-Approval: e9*134/2014*2018/295H*11027*00





S&S® Cycle, Inc. 14025 CTY HWY G Viola, WI 54664
608-627-1497 sscust@sscycle.com sscycle.com
510-0630 March 2021

S&S Cycle, Inc. reserves the right to change prices, terms, availability, and specifications without prior notice.

