





MISSION STATEMENT.

The Birth of Custom Chrome

In 1970, four friends with a shared passion started a shop to customize motorcycles. They soon recognized a shared desire from other riders who wanted to customize their bikes with tested, reliable and uniquely designed accessories. Custom Chrome was born from this vision and began selling quality after-market parts for Harley-Davidsons.

Return to Our Roots

Over 45 years of growth and evolution in the parts industry has brought Custom Chrome back to its roots as a parts manufacturer. Our renewed mission is to manufacture the most innovative products of the highest quality in the industry. We will provide superior lines of parts and accessories throughout our exclusive brands of RevTech, MotorFactory, Santee and Jammer products.

Commitment to Shared Values and Vision

Custom Chrome is committed to fulfilling our mission with a passion that will drive our business to the next level and beyond. An integral part of this commitment is the continued partnership, shared values and vision of our dealers, suppliers and employees. Together we will bring both the latest in equipment innovation and the best "Old School Cool" accessories to a new generation of bike enthusiasts.

OUR BRANDS.

Trusted products with over 45 years of experience

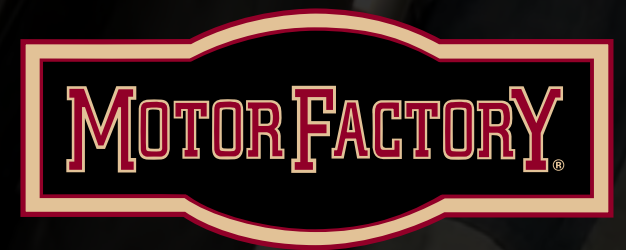
It doesn't matter if you're looking for Old School Cool, Performance Upgrades, OEM replacement or maintenance items, you simply can't go wrong with the complete line of Custom Chrome branded products.

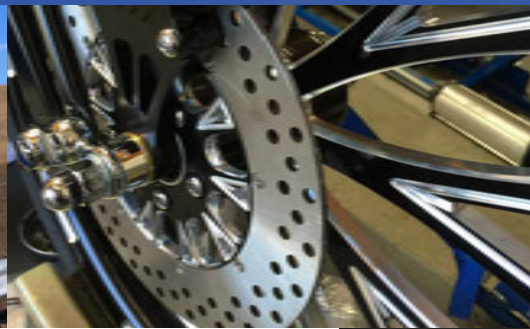
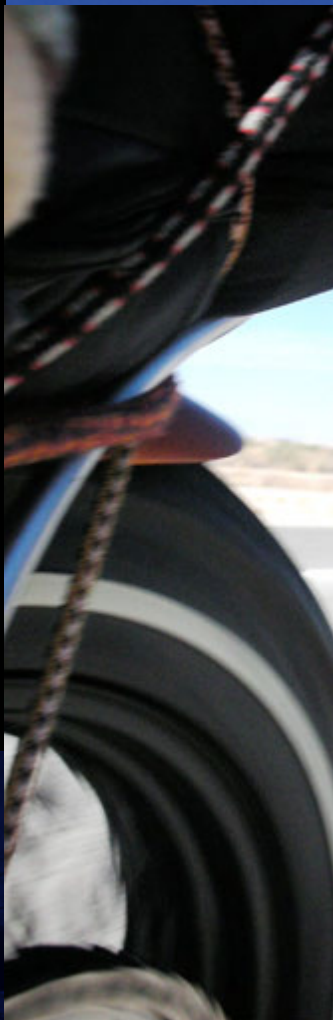
Here at Custom Chrome, we are focused on bringing you premium items for your Harley-Davidson™ motorcycle. Check out our brands, each of which offers something special for your ride.

With an outstanding focus on quality and what you desire, our product managers search the planet to find and deliver the very latest and best products available.

New for this year, we have refocused our efforts to greater support our brand offerings. This will allow us to better provide you with the finest quality, pricing and highest availability in each area.

Customize your ride with Custom Chrome branded products.





OUR PARTNERS

Custom Chrome partners with industry inventors and innovators. Here at Custom Chrome, we value our partners and strive to help them provide high quality products at a reasonable price.

As a Custom Chrome partner, we are here to help you. By reducing your R&D cost and time to manufacture, we allow you to bring your product to market quickly and in an affordable manner to meet the price point your customer will love.

With a full staff of product specialists, designers, engineers, manufacturing and marketing departments, we are able to offer our partners a complete solution to achieve their dream.

With the proven CCI network of distribution centers and dealers worldwide, we can get your products to the customer to meet their deadlines.



Exclusive designs by
master builder Jesse James



Exclusive designs by
master builder Kirk Taylor



Unique designs by
master builder Donnie Smith

john reed

Exclusive designs by
Motorcycle Hall of Fame inductee,
John Reed



Custom designs by
master builder Fred Kodlin



Rick Doss, Inc.
Exclusive designs by
master builder Rick Doss



PAUL YAFFE ORIGINALS
DESIGN & DEVELOPMENT

Original designs by
master builder Paul Yaffe

Look for these 'Signature Series' Products.

REVTECH MUSCLE

From the Pacific Coast Highway 1 to the Sonoma Drag Strip, this is the California bike that can handle it all. With a RevTech 125" inch beast of an engine and a 6-Speed Transmission putting the power to a matched set of 18" inch RevTech Billet Wheels this bike can move. The key to handling this much power is the superior suspension package. When it's time to stop this RevTech, 4-piston calipers have the braking power to safely reign in this beast!



SPORTSTER SCRAMBLER

This bike is a tribute to the old scrambler and hill climbers of days gone by. It all started with a stock 2006 XL. We gutted it and put the stock drivetrain into a rubber mounted Santee rigid frame. And the next step was selecting the parts to customize the style.

We choose from our collection of fuel injected gas tanks and then painted some custom fenders to match. Strapped on a LaRosa zippered saddle bag and finished up with some Santee Holeshoot pipes and sweet chrome end caps. That turned stock and boring into eye catching fun!



* Legal in California only for racing vehicles which may never be used, or registered or licensed for use, upon a highway.

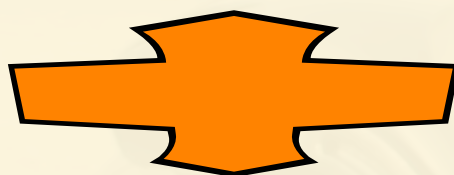


TABLE OF CONTENTS

MISSION STATEMENT BRANDS	2-3
PARTNERS	4-5
TABLE OF CONTENTS TESTIMONIALS	8-9
REVTECH	10-11
SANTEE	12-13
MOTORFACTORY	14-15
JAMMER CYCLES	16-17
'LUCKY SUCKER' COLLECTION	18-19
ULTRACOOOL COOLING SYSTEMS	20-21
ENGINE INTAKE EXHAUST	22-23
TRANSMISSION DRIVELINE	24-25
HANDLEBARS CONTROLS	26-27
CHASSIS	28-29
LIGHTING ELECTRICAL	30-31
SERVICE	32-33
SPEEDWAY BAGGER BIKE	36-37

TESTIMONIALS



"I have been building and repairing motorcycles for over 45 years. CCI is one of the go to companies when it comes to ordering parts. Their customer service and commitment to the motorcycle industry are top notch.

I look forward to working with them for many years to come."

Steve Broyles Sr.
Stevenson's Cycle
stevensonscycle.com



"I've been working with Custom Chrome for over 20 years. CCI has always impressed me with their commitment to bring new and innovative products to the V-Twin market. From the RevTech product line of performance drivetrain components, to the "Lucky Sucker" sheet metal/ body work line.

CCI is a leading force in the V-Twin industry."

Kirk Taylor
Custom Design Studios
customdesignstudios.com



"I have been in the custom motorcycle industry for 25 Years and have always had great experiences with Custom Chrome. While ALL manufacturers and suppliers have, at times, struggled with inventory and up and down cycles within the market, Custom Chrome has been one of the survivors for a reason. Their knowledgeable staff and desire to take care of their dealers is what makes me stay with them and support their position in this market!"

Kurt Peterson
Lil Evil Inkorpor8ted
lilevilinkorpor8ted.com



Custom Chrome has been one of Hot Rod Alleys primary distributors since 2000. The team at CCI has been there through the thick and thin of market ups and downs with us and has always been there when we needed them. From spark plugs to complete motorcycles, we have stayed loyal due to the impeccable service provided. The guys and gals from the sales and service teams have been a highlight of our day when we receive their calls. The technical support staff as well as warranty department are second to none. Thank you for 16 years of the best customer service a company could ask for.

Noah O'Geen
Hot Rod Alley/Enterprises Inc.

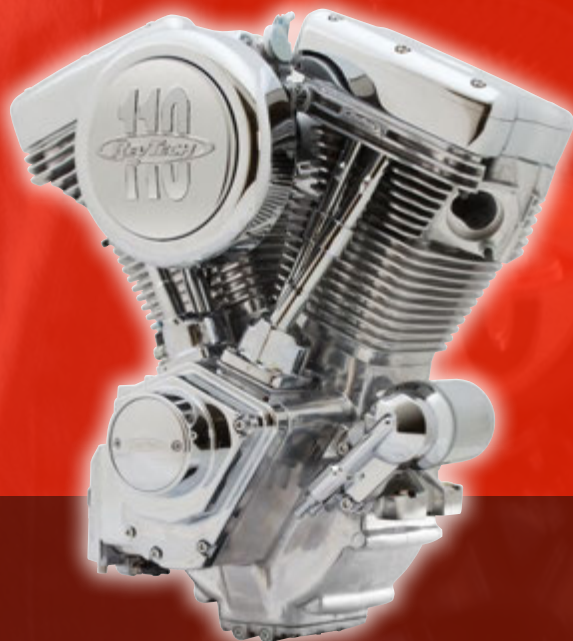


LEGENDARY PERFORMANCE.

You know the name. You know what you get from 45 years of hard work, research and performance. You get RevTech.

You get the right balance of power and precision. You get the complete line of RevTech tested products. All of them run through tests of fire by racing them, breaking them and then testing them some more. From engines to oils, wheels to controls and everything in between. You see one of the world's best selling brands everywhere: cycle shops, motorcycle rallies, to our CCI fans on the internet.

You know the name and you've heard the stories. You know what RevTech delivers. **Legendary Performance.**





Magnacharger and RevTech High Performance Oil Work Together

"Whether it is a total custom or a daily driver, Magnacharger now offers a 'drop-in', pre-run, **pre-tuned Supercharged RevTech 100" engine** ready to install and terrorize the rear tire! Like all our street Magnacharged engines, **we recommend RevTech High Performance 20W50 engine oil for reliability and peace of mind**, Top Quality lubrication blended in the USA, formulated for your V-Twin."

Bill Bushling - Magnacharger





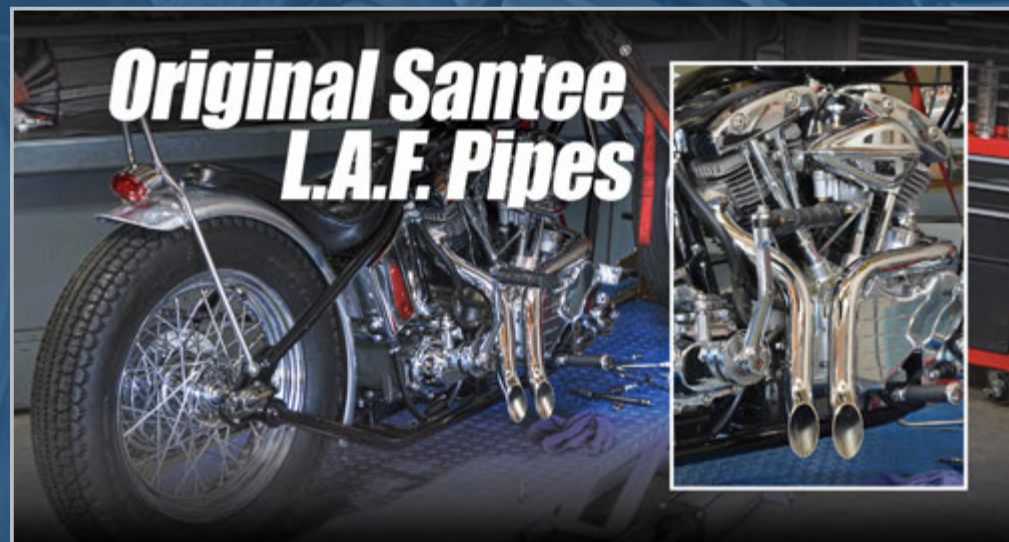
A RICH HERITAGE OF QUALITY.

Are you looking to build a new bike and need a frame and some new bars? How about matching tanks and fenders or a set of saddlebags? Or if you are just looking for the baddest pipes around, Santee has always been imitated but rarely duplicated. There is a huge selection of matched styles, sizes and fitments through the Santee® branded family.

Santee Motorcycle products started in SoCal and was designed to focus on premium "Made in America" items. We are proud to say that Santee still delivers on that promise of quality, selection and availability that you have come to expect.

Whether you are building new or upgrading your ride, you can't go wrong with Santee products. With Santee products you get OEM quality with custom style and fitments. Tall, Short, Skinny or Phat... Santee has the products you crave for that one of a kind look.

Foundation products with a rich heritage of quality.





* Legal in California only for racing vehicles which may never be used, or registered or licensed for use, upon a highway.


MOTORFACTORY

BEST QUALITY MAINTENANCE/REPLACEMENT PARTS

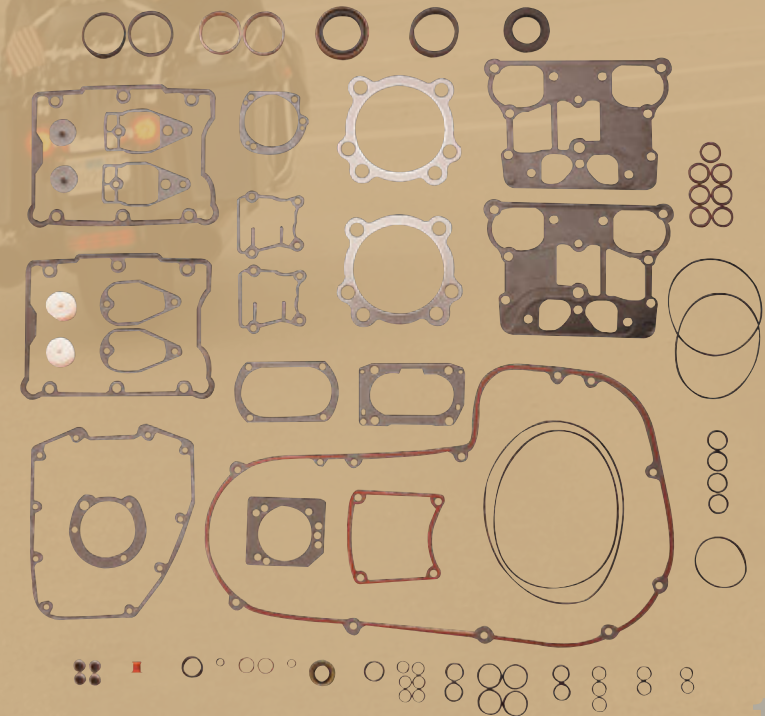


MotorFactory carries a complete line of maintenance and service products for V-Twin motorcycles from Knuckleheads to Twin Cams. Whether it's lubricants to batteries, filters to chains, you will always find the finest quality and best priced products that will keep you on the road.

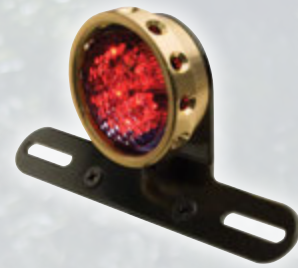
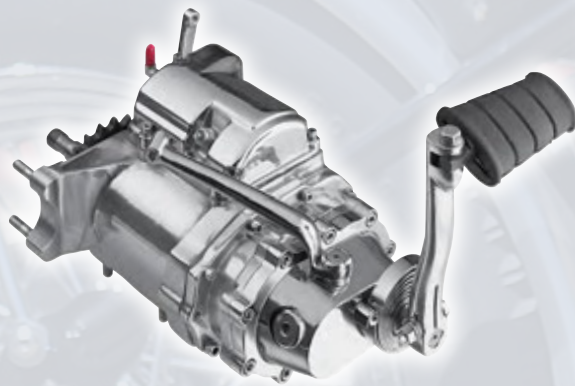




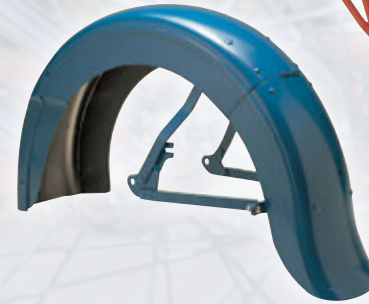
MotorFactory carries a complete line of gaskets that meet the performance needs for Harley V-Twin Models: Knuckleheads, Flatheads, Shovelheads, Panheads, Sportster, Evolution and Twin Cams.



JAMMER CYCLES



OLD SCHOOL COOL.



LUCKY SUCKER KIT

Looking to switch out your stock look for that awesome custom vibe you've been craving? Now it can be as easily done with our bolt on Lucky Sucker conversion kit! With variety of different options, the Lucky Sucker kit gives you lots of choices to get that feel you've wanted without breaking your budget to get it. With multiple tanks and additional options, you can get that rigid style while adding other options from the rest of the CCI book.



Lucky Sucker Gas Tank



Lucky Sucker Rigid Style
Fender Struts



Lucky Sucker Wide Rigid Style
Fender (200mm)



Lucky Sucker Solo Seat Kit



Cole Foster Gas Tank for EFI Models



Lucky Sucker Gas Tank Adapter



Here are some other additional part suggestions for your Softail® Lucky Sucker Kit. All hand selected and available inside the Custom Chrome catalog!



**Indian Larry
Styled Dished Tank**



**'Original' Santee
L.A.F. Pipes**



**Tear Drop Ribbed
Air Cleaner**

* Legal in California only for racing vehicles which may never be used, or registered or licensed for use, upon a highway.

COOL YOUR ENGINES!

Most riders will agree that when you are stuck in stop-n-go traffic or riding on those hot summer days, is when your bike will start to build up excessive amounts of heat leading to loss of performance, shortened engine longevity as well as discomfort to the rider. The goal is to maintain your engines oil temperature.

The way to do this is to let your engine get up to 210-220 to burn off the condensation in the crank cases. Then turn on the fan to drive the temperature down to 190 at that time the fan will turn off. As the temperature goes up to 210 the fan turns on to keep your engine cool. An oil cooler should be built to last, Made from top quality materials.

UltraCool uses all stainless steel bolts and nylock nuts. The covers are a steel construction with an ABS plastic grill that can take the abuse from the rocks and debris from the road. The custom made oil filter adapter is machined from 6061 aluminum. The cooling fans are water resistant and dust proof and the thermal switch is rated at 100,000 cycles of service.



**UltraCool Cooling Systems For
Touring/Dyna Models - Black**



**UltraCool Cooling Systems
For Touring/Dyna Models -
Chrome**



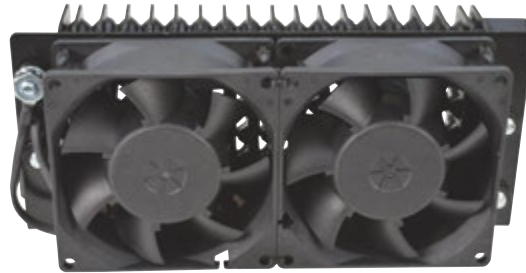
**UltraCool Cooling Systems For
Softtail Models - Chrome**

**UltraCool Cooling Systems For
Softtail Models - Black**



Heavy Duty Design For Touring, Dyna and Softail Models

- All steel housing for increased durability
- Sturdy ABS grill deflects road debris from fans
- Heavy-duty 1/8 inch thick mounting bracket



FRONT VIEW

Dual Fan Technology

- Compact yet powerful blade design for maximum air
- Powerful dual 90CFM fans
- Fans are rated to IP55 standards to resist dust and moisture invasion



Custom Oil Adapter

- Solid aluminum construction with a silicone coated gasket
- 6-bolt pattern for a leak free installation
- Built in thermal switch helps maintain proper oil temperature



Braided Stainless Steel Oil Lines

- Assembled from SS304 stainless braiding with PTSE silicone high temp tubing and a black nylon cover.
- AN-6 fittings for maximum oil flow



BACK VIEW

Heat Exchanger

- Highly efficient 17-row design for maximum oil cooling



LED Indicator Light

- Dash mounted LED for high visibility.
- A clear indication your fans are working.
- Another UltraCool exclusive.

ENGINE / INTAKE / EXHAUST

Engine, Intake & Exhaust include all parts related to the powerplant. Carbs, Air Cleaners providing the pure mix of fuel and air for combustion and horsepower production. Exhaust systems for performance and delivery tuned rumble of your V-Twin.

RevTech 125" Engine - Big Inch Muscle!

From 88 to 125 cubic inches the RevTech engine is engineered and assembled to a higher quality in the USA. Strength and endurance for the long haul. Engines designed with more power, dependability and detailed style. Engineered and tested under extreme conditions. All versions and sizes of our engines are perfect upgrades to existing Evolution power plants. Bigger, better, and rigorously tested. Built to precise specs and assembled with sourced parts from leaders in the industry. Remarkable brands such as Manley, KB Pistons, Dynatek, Andrews, Mikuni American Corp., Timken and many more quality parts manufacturers.

Assembled with pride in the U.S.A.

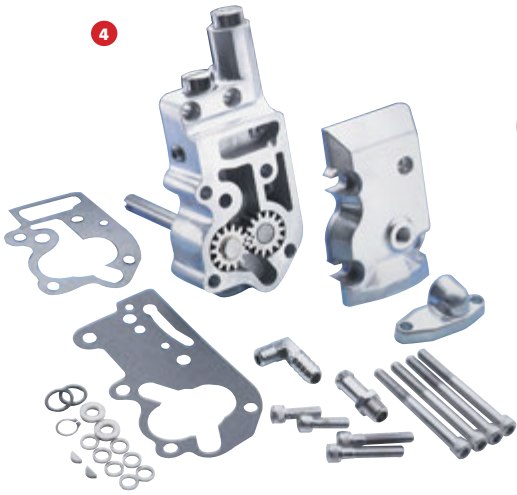
Intake

Where does the power begin? Some say at the point of clean air and high octane fuel mixture. Pay attention to this and use precise tuning to get the maximum horse power from your engine. Custom Chrome brings performance to the intake side of your engine. From air cleaners and filters to fuel optimizers and the finest high flow carburetors. All matched to pull out the highest peak power available.



- 1 **Santee "Designer Series" Double Barrel High Exhaust**
- 2 **Leather Covered Universal Exhaust Heat Shields by LaRosa Designs**
- 3 **RevTech Engines - Limited Edition Black Pan**
- 4 **RevTech Oil Pump Kits**
- 5 **Custom Chrome Economy Air Cleaner Kits**
- 6 **'Sculpted' 2-Piece Forged Aluminum Rocker Box Kit for Twin Cam Models**
- 7 **UltraCool Oil Cooling Systems**
- 8 **Custom Velocity Stack Air Cleaner**

* Legal in California only for racing vehicles which may never be used, or registered or licensed for use, upon a highway.



"The RevTech big bore kit changed our life on the road. Going from an 88" to 97" helped tremendously! Pulling luggage bags and a 600 pound trailer through mountains and highways all across the country was easy, even after 40,000 miles in 7 months!"

Chad "Torch" Land - Fire Performer
torchfireperformer.com



TRANSMISSION / DRIVELINE

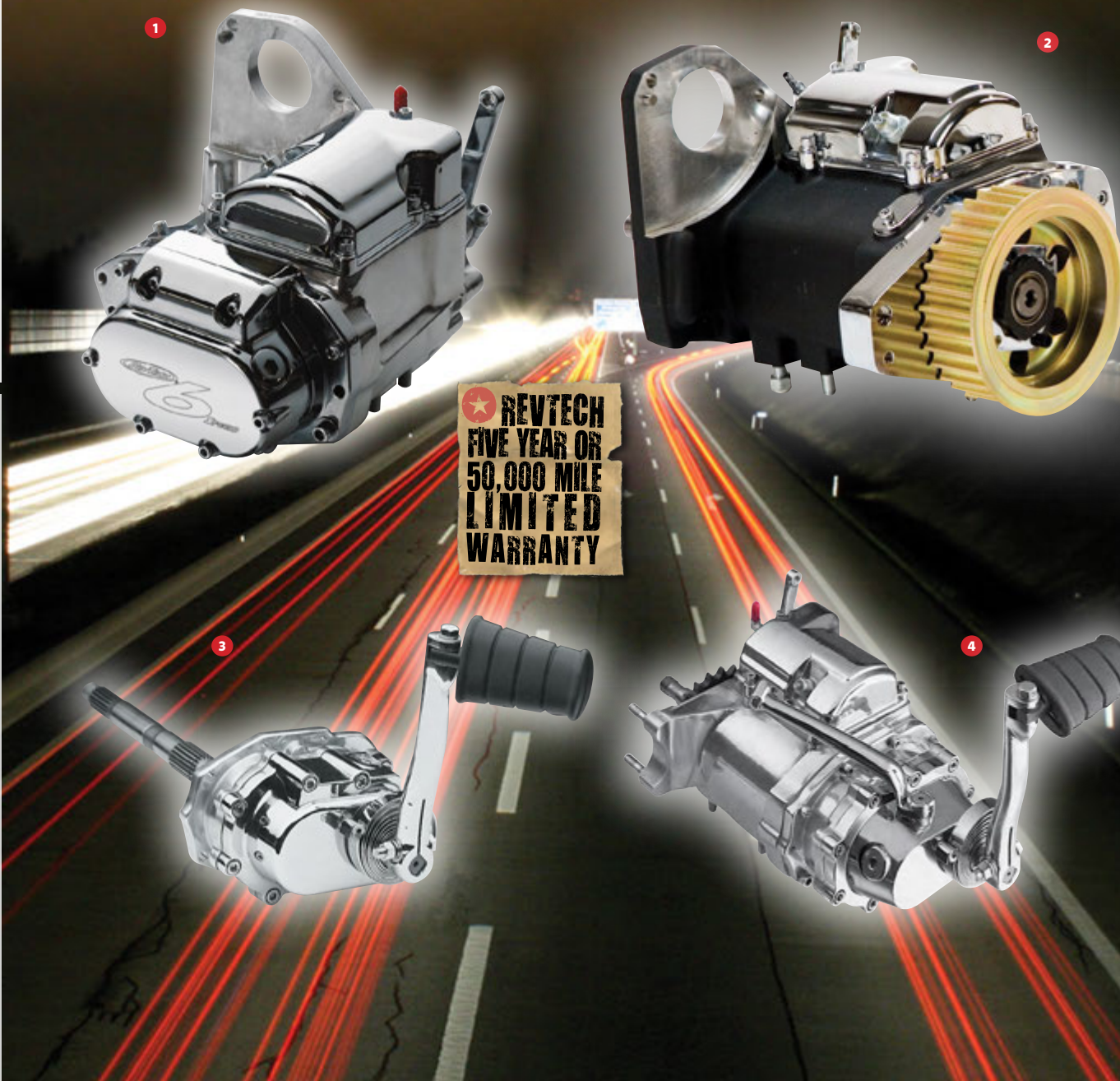
Transmission

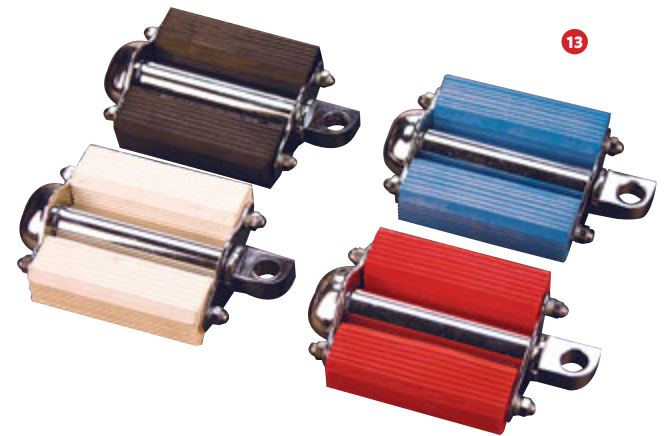
RevTech transmissions available in 4, 5, and 6 speed configurations are stress tested for 120 non-stop hours at extremely high loads. In addition to the durability testing, we perform an additional test of 50,000 to 60,000 shift cycles. Complete testing combined with precision machined shafts and specially-designed ratchet gears will smoothly transport your v-twin down the highway.

Driveline

From primaries, clutches, belt drives and chains Custom Chrome has you covered for all your driveline needs.

- 1 Revtech 6-Speed 'Overdrive' Complete Transmission
- 2 Revtech 6-Speed Transmission Assemblies
- 3 KickStart Kit for 5-Speed Transmissions
- 4 RevTech Right-Side Drive 6-Speed for Softails
- 5 Chrome or Black Cast Early-Style Outer Primary Covers
- 6 RevTech 6-Speed Gearset with Helical 5th and 6th Gears, includes Trapdoor and Bearings
- 7 Heavy Duty Soft Pull Clutch Kit by Custom Chrome
- 8 Rear Sprockets for 2000-Up Style Sealed Bearing Wheels
- 9 Replacement Belt Drive Clutch Kits
- 10 Chrome 'Porthole' Cover
- 11 RevTech 3" Open Belt Drive
- 12 MotorFactory O-Ring Chains
- 13 Colored Bicycle Style Kicker Pedals





HANDLEBARS / CONTROLS

Handlebars

Santee handlebars are constructed in a variety of designs to fit your stock Harley or next custom project bike. Ape Hangers, Bonanza bars designed by Fred Kodlin replacement bars for touring models, Jammer Hollywood and Speedster bars for springers. Constructed of steel tubing and CNC bent for smooth lines. Choose from several designs and measurements to custom fit your project.

Foot and Hand Controls

There is a reason they call them controls. With proper control the ride is more enjoyable. Ergonomically the reach for your hands and feet are different for each of us. Fine tune your bike controls to fit your style.

- 1 **The Chrome Smooth-Contour Control Kits**
- 2 **'Diablo' 1-1/4" Handlebars by Santee**
- 3 **Santee 1" Wide and Low Handlebars**
- 4 **Mirage and Inferno 'Asshole' Mirrors**
- 5 **Custom Ergonomic Lever Blades**
- 6 **Stroker Billet Grips**
- 7 **Panorama Custom Grips (Black/Bronze)**
- 8 **Custom Billet Shift Linkage**
- 9 **Santee 'Bonanza' Handlebars**
- 10 **Street Bob Handle Bar Risers**
- 11 **Straight Up 1 1/4" T-Bars**
- 12 **Extended Reach Floorboards**
- 13 **Chrome Billet Forward Controls**
- 14 **Black Billet Forward Controls**





CHASSIS

Chassis

Suspension and chassis are the skeleton of the bike. All you need hangs off these bones. Start with sturdy frames from Santee, forks, lowering kits and suspension. Select the right fenders front and rear to cover your wheels, bolt on custom gas tanks, oil tanks. The chassis will carry all you need to get you there and back.

- 1 **Santee Low Glide Stock Replacement Frame**
- 2 **FXR-Style Frame for Touring Model Drivelines**
- 3 **Santee Rigid Frame for 04-Up Rubber Mounted Sportsters**
- 4 **Santee 4-Speed Rigid Frame**
- 5 **RevTech Hydro Midnight Series Wheels**
- 6 **RevTech Velocity Midnight Series Wheels**
- 7 **40 Spoke Laced Wheel Assemblies**
- 8 **Dual Disc 41mm Front End Assemblies for FXWG Models from 80-83**
- 9 **West Coast Choppers Custom Stretched Gas Tank**
- 10 **PYO/Bagger Nation Custom Stretched Gas Tank**
- 11 **'One Ton Ho' and 'Two Ton Ho' Custom Rear Fenders**
- 12 **Polished Stainless Steel Brake Rotors by DNA**
- 13 **Solo Seats by LaRosa Designs**
- 14 **RevTech High Performance Billet 4-Piston Brake Caliper**
- 15 **RevTech Chassis Stabilizer**
- 16 **Solo Bags by LaRosa Designs**
- 17 **Motor Factory Speedometers**
- 18 **Stretched Saddlebags**





LIGHTING / ELECTRICAL

Lighting

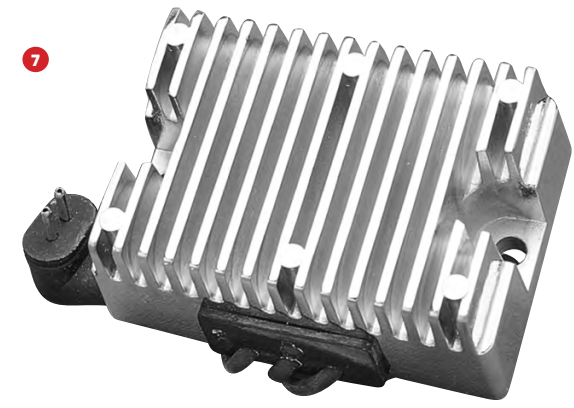
First, lights are helping others to see you. That's a great safety feature. Then after dark, the right headlight will clearly light the way. Lighting is an important necessity and accessory. From headlights, marker lights, and taillights; these Custom Chrome offerings are popular top sellers with too many to show them all here.

Electrical

Think about the electrical system of your V-Twin. How reliable are the electrical parts in this critical system within your bike? How old is it? Good questions since it carries the spark for the engine, juice for the lights and gauges, starters, coils, stators and regulators to name a few. Overall performance relies on these critical components.

- 1 **5.75" LED Headlights and Inserts**
- 2 **Retro Drilled Taillights (Brass/Black)**
- 3 **LED Star Turn Signals**
- 4 **'Laydown' Taillight Lenses with LED Lights**
- 5 **LED Curved License Plate Frame and Laydown Mount**
- 6 **MotorFactory Stators for Big Twin and Sportster Models**
- 7 **MotorFactory Finned Rectifier / Regulators**
- 8 **MotorFactory Prestolite-Type Starter**
- 9 **Custom Chrome LED Bullet Lights**
- 10 **MotorFactory High Torque Starters**
- 11 **RevTech High Performance 12-Volt Coils**
- 12 **MotorFactory OEM Style Performance Coils**
- 13 **Thunderbolt 12-Volt Coil**
- 14 **Solenoid Cover Starter Button Switches**





SERVICE / MAINTENANCE

Service and Maintenance

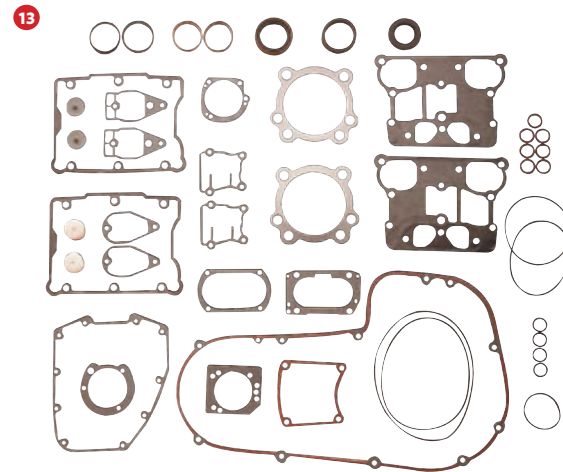
Custom Chrome offers complete line of service items in stock your shop. This allows your shop to be a complete service center.

RevTech and MotorFactory oils have been an industry standard for many years, formulated to meet the demands of the toughest Harley-Davidson V-Twin engines. Developed exclusively for Custom Chrome by a major U.S. oil company and blended in the USA.

Brakes, chains, filters and batteries manufactured the highest quality standards utilizing U.S. and European vendors.

- 1 **RevTech Complete Oil Change Kits**
- 2 **MotorFactory Brake Pads**
- 3 **MotorFactory Brake Fluid**
- 4 **RevTech PURE Ultimate Motor Oil**
RevTech Synthetic MTP Motor Oil
RevTech High Performance Motor Oil
- 5 **MotorFactory Primary Chain**
- 6 **MotorFactory SAE 20W50 Motorcycle Oil**
- 7 **RevTech High Performance Oil Filters**
- 8 **MotorFactory Drop-In Oil Filter**
- 9 **Heavy Duty Ratcheting Tie Downs**
- 10 **Custom Chrome Hardware Kits**
- 11 **MotorFactory Replacement Air Filters**
- 12 **Master Cylinder Rebuild Kits**
- 13 **MotorFactory Gasket and Seal Kits**
- 14 **MotorFactory Batteries**



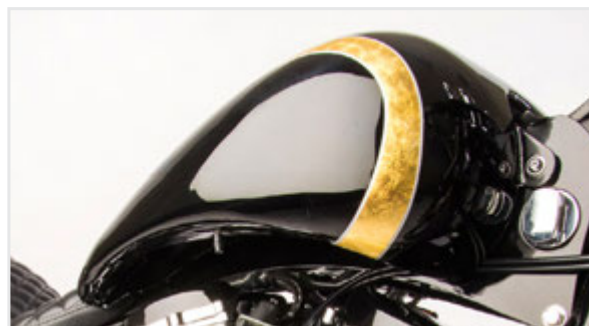


SPEEDWAY SPRINGER

Take a stock softail and the Custom Chrome catalog and let your imagination run. Let this work of low slung art inspire your next build. Start at the raked out springer front end holding the ample 23" inch wheel. See how the 4" inch halogen headlight and Custom Chrome mirrors tie in with the Tornado billet bronze grips, foot pegs and the Jammer Tear Drop smooth slotted air cleaner. End with exhaust pipes from Santee, heat shields from LaRosa and brass end caps. Customize and dream big with a Custom Chrome catalog.



CUSTOM ROTORS



STRETCHED 4 GALLON XL TANK



REVTECH HYDRO MIDNIGHT SERIES WHEEL



CUSTOM OIL TANK



PAN COVERS



LA ROSA HEAT SHIELDS



* Legal in California only for racing vehicles which may never be used, or registered or licensed for use, upon a highway.

IMPORTANT NOTICES

For over 40 years, Custom Chrome® (CCI) has been committed to serving the needs of the Harley-Davidson® rider. Our goal has been, and will continue to be, providing the very best and most innovative products possible. None of the products appearing in this catalog are licensed, manufactured, sponsored or endorsed by Harley-Davidson, Inc. Use of the word Harley-Davidson, various model names and designations, and OEM part numbers are provided solely for reference and application information, and there is no affiliation between Harley-Davidson, Inc. and Custom Chrome.

The words: Blast, Buell, Cyclone, Disc Glide, Electra Glide, Evolution, Fat Boy, Firebolt, HD, H-D, Harley, Harley-Davidson, Heritage Softail, Heritage Springer, Hugger, Lightning, Low Rider, Night Train, Revolution, Road Glide, Road King, Roadster, Screamin' Eagle, Softail, Sport Glide, Sportster, Springer Softail, Sturgis, Super Glide, T-Sport, Tour-Pak, Twin Cam 88, Ultra Classic, Wide Glide and V-Rod are registered trademarks of Harley-Davidson, Inc., Milwaukee, Wisconsin, U.S.A.

The words: Bad Boy, Convertible, Destroyer, Deuce, Duo-Glide, Dyna, Hydra-Glide, Night Rod, Street Bob, Street Glide, Street Rod, Thunderbolt, Twin Cam 88B, Twin Cam 95, Twin Cam 95B, Twin Cam 96, Twin Cam 103, Twin Cam 103B and Ulysses are trademarks of Harley-Davidson, Inc., Milwaukee, Wisconsin, U.S.A.

The following model designations for Harley-Davidson motorcycles are used in this catalog for reference only: EL, FL, FLH, FLS, FLD, FLHC, FLHF, FLHR, FLHRI, FLHRCI, FLHRS, FLHRSI, FLHRSEI, FLHRSEI2, FLHS, FLHT, FLHTC, FLHTCI, FLHTCSE, FLHTCSE2, FLHTCU, FLHTCUI, FLHTCUSE, FLHTI, FLHX, FLHXI, FLHTK, FLST, FLSTI, FLSTC, FLSTCI, FLSTSB, FLSTF, FLSTFI, FLSTFIAE, FLSTFSE, FLSTFSE2, FLSTN, FLSTNI, FLSTS, FLSTSC, FLSTSCI, FLSTSI, FLT, FLTC, FLTCU, FLTCUI, FLTR, FLTRI, FLTRSEI, FLTRSEI2, FLTRU, FLTRX, FX, FXCW, FXCWC, FXSB, FXB, FXD, FXDI, FXDB, FXDBI, FXDC, FXDCI, FXDG, FXDI35, FXDF, FXDL, FXDLI, FXDS-Conv., FXDWG, FXDWGI, FXDWG2, FXDWG3, FXDX, FXDXI, FXDXT, FXE, FXEF, FXLR, FXR, FXR2, FXR3, FXR4, FXRC, FXRD, FXRDG, FXRP, FXRS, FXRSE, FXRS-Conv., FXRS-SP, FXRT, FXS, FXSB, FXST, FXSTB, FXSTBI, FXSTC, FXSTD, FXSTDI, FXSTDSE, FXSTDSE2, FXSTI, FXSTS, FXSTSB, FXSTSI, FXWG, GE, K, KH, KHK, M2, S1, S1W, S2, S2T, S3, S3T, VRSCA, VRSCB, VRSCD, VRSCR, VRSCSE, VRSCSE2, VRXSE, WL,

WLA, X1, X1W, XB9R, XB9S, XB9SX, XB12R, XB12S, XB12Scq, XB12Ss, XB12X, XL, XL 53C, XL 883, XL 883C, XL 883L, XL 883R, XL 1200C, XL 1200L, XL 1200R, XL 1200S, XLCH, XLCR, XLH, XLH 883, XLH 1100, XLH 1200, XLR, XLS, XLT, XLX, XLX-61, XR-1000 and Nightster. XL1200CB, XL1200CP, XL883N, XL1200V, XL1200X

The words: Custom Chrome, Jammer Cycles, Jammer's Handbook, Premium, Santee, RevTech and MotorFactory are registered trademarks of Custom Chrome, Morgan Hill, California, U.S.A.

* Legal in California only for racing vehicles which may never be used, or registered or licensed for use, upon a highway.

All other brand names or trademarks or registered trademarks used in this catalog are the property of their respective holders.

© Copyright 1982-2016 by Custom Chrome - A division of DAE-IL USA, Inc. All rights reserved. No part of this publication may be reproduced, stored in a retrieval system or transmitted in any form or by any means; electronic, mechanical, photocopying, recording, or otherwise without prior written permission of the publisher.

NOTES

A series of horizontal lines for writing notes, with a large, light gray watermark in the center.



World's Finest Products For Harley-Davidsons



customchrome.com

