



**Performance
Motorcycle Exhaust
844-DND-PIPE**

D&D Performance LLC.

2923 Edith Lane

Fort Worth, Texas 76117

817-834-8961 Fax 817-831-4260

Info@danddexhaust.com sales@danddexhaust.com warranty@danddexhaust.com



Notes





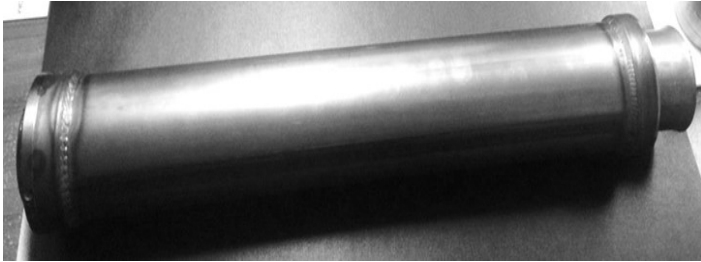
Back Cut



Slant Cut



Straight Cut



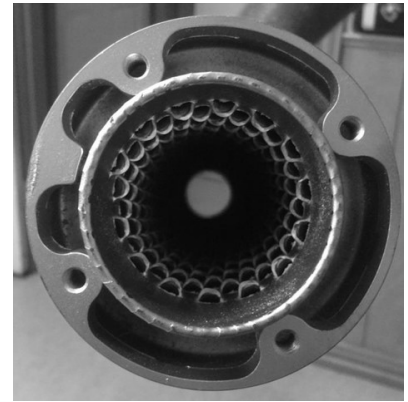
All Metal Baffle



Wrapped Baffle



Louvered Baffle



Vortex Baffle with End-Cap



Perforated Baffle



Perforated Wrapped

Index

Pages	5-15 Harley Davidson Touring Bikes
Pages	16-21 Harley Davidson Softail
Pages	22-23 Harley Davidson Dyna
Page	24 Harley Davidson V-Rod
Page	25 Harley Davidson Sportster
Page	26 Harley Davidson Street



Slip-on Mufflers



Back Cut



Slant Cut



Straight Cut

408-11TSVQ	95-16 FLH/FLT 3 1/2" Black Straight Cut Vortex baffle	\$549
408-12TSVQ	95-16 FLH/FLT 3 1/2" Chrome Straight Cut Vortex baffle	\$499
408-11LSVQ	95-16 FLH/FLT 3 1/2" Black Slant Cut Vortex baffle	\$549
408-12LSVQ	95-16 FLH/FLT 3 1/2" Chrome Slant Cut Vortex baffle	\$499
408-11BSVQ	95-16 FLH/FLT 3 1/2" Black Back Cut Vortex baffle	\$549
408-12BSVQ	95-16 FLH/FLT 3 1/2" Chrome Back Cut Vortex baffle	\$499

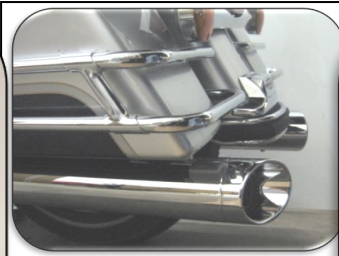
2"
Core

S/O		
536-11TVQ	95-16 FLH/FLT 4" Black Straight Cut Vortex baffle	\$699
536-12TVQ	95-16 FLH/FLT 4" Chrome Straight Cut Vortex baffle	\$599
536-11LVQ	95-16 FLH/FLT 4" Black Slant Cut Vortex baffle	\$699
536-12LVQ	95-16 FLH/FLT 4" Chrome Slant Cut Vortex baffle	\$599
536-11BVQ	95-16 FLH/FLT 4" Black Back Cut Vortex baffle	\$699
536-12BVQ	95-16 FLH/FLT 4" Chrome Back Cut Vortex baffle	\$599

2 1/2"
Core



End-Caps for Slip-on Muffler and Billet Cat

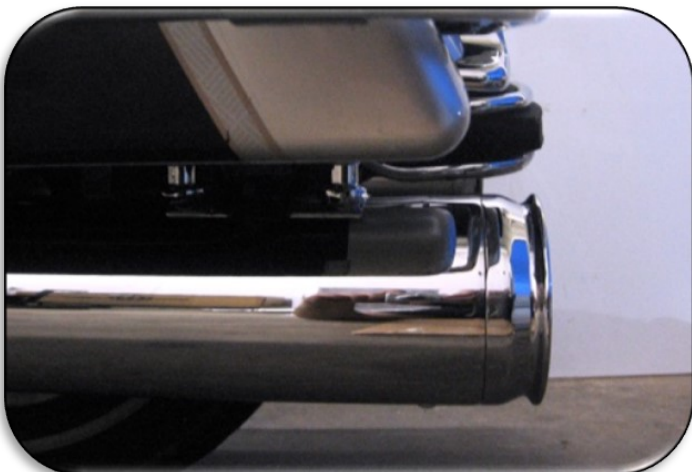


30 Degree Angle Cut End-cap



Straight Cut End-cap

Race Style



Fish Mouth End-cap

Slip-on Mufflers with Vortex Louvered Wrapped Baffle for Interchangeable End Caps Sold Separately



621-11TVQ	95-16	FLH/FLT 3 1/2" Black Straight cut Vortex baffle	\$549		2"
621-12TVQ	95-16	FLH/FLT 3 1/2" Chrome Straight cut Vortex baffle	\$499		Core
622-11TVQ	95-16	FLH/FLT 4" Black Straight cut Vortex baffle	\$699	S/O	End Caps Not 2 1/2"
622-12TVQ	95-16	FLH/FLT 4" Chrome Straight cut Vortex baffle	\$599		Core
624-11TVQ	95-16	FLH/FLT 4 1/2" Black Straight cut Vortex baffle	\$759		
624-12TVQ	95-16	FLH/FLT 4 1/2" Chrome Straight cut Vortex baffle	\$649		

End-Caps for Slip-on Mufflers and Billet Cat Full Systems

603-11EcapS	3 1/2" Black Straight Cut End-cap	\$99
603-11EcapFM	3 1/2" Black Fish Mouth Cut End-cap	\$99
603-11EcapRS	3 1/2" Black Race Style Cut End-cap	\$99
603-11Ecap30	3 1/2" Black 30 Degree Angle Cut End-cap	\$149
603-12EcapS	3 1/2" Chrome Straight Cut End-cap	\$99
603-12EcapFM	3 1/2" Chrome Fish Mouth Cut End-cap	\$99
603-12EcapRS	3 1/2" Chrome Race Style Cut End-cap	\$99
603-12Ecap30	3 1/2" Chrome 30 Degree Angle Cut End-cap	\$149
604-11EcapS	4" Black Straight Cut End-cap	\$99
604-11EcapFM	4" Black Fish Mouth Cut End-cap	\$99
604-11EcapRS	4" Black Race Style Cut End-cap	\$99
604-11Ecap30	4" Black 30 Degree Angle Cut End-cap	\$149
604-12EcapS	4" Chrome Straight Cut End-cap	\$99
604-12EcapFM	4" Chrome Fish Mouth Cut End-cap	\$99
604-12EcapRS	4" Chrome Race Style Cut End-cap	\$99
604-12Ecap30	4" Chrome 30 Degree Angle Cut End-cap	\$149
605-11EcapS	4.5" Black Straight Cut End-cap	\$125
605-11EcapFM	4.5" Black Fish Mouth Cut End-cap	\$125
605-11EcapRS	4.5" Black Race Style Cut End-cap	\$125
605-11Ecap30	4.5" Black 30 Degree Angle Cut End-cap	\$170
605-12EcapS	4.5" Chrome Straight Cut End-cap	\$125
605-12EcapFM	4.5" Chrome Fish Mouth Cut End-cap	\$125
605-12EcapRS	4.5" Chrome Race Style Cut End-cap	\$125
605-12Ecap30	4.5" Chrome 30 Degree Angle Cut End-cap	\$170

Sold
As
Each



X-Cat 2 into 2 Header System



623Z-21X	09-16 FLH/FLT Black X-Cat 2:2 Header and Shields Only	\$779	2:2	18mm & 12mm
623Z-22X	09-16 FLH/FLT Chrome X-Cat 2:2 Header and Shields only	\$679	2:2	02 Bungs

MUFFLERS and End-Caps NOT INCLUDED see on page 5

Stubby Cat



619Z-31	09-16 FLH/FLT Black with Vortex Wrapped baffle	\$1,549	F/S	18mm & 12mm	2"
619Z-32	09-16 FLH/FLT Chrome with Vortex Wrapped baffle	\$1,399	F/S	02 Bungs	Core
	Directional End-Cap			1 3/4" primaries	

Will Not Fit 1995-2008 because of mounting issues

Notice:

The Stubby Cat was designed to be use with long stretch bags. When using on stock bags and aggressive riding you might damage the end of the muffler and there is NO WARRANTY for this issue.

Mega Cat for S&S T143 will not fit any other motor



- | | | | | |
|--|--|----------------|------------|------------------------|
| 625Z-31T | 09-16 FLH/FLT Black 2:1 with 4.5" Straight Cut Muffler | \$1,879 | F/S | 18mm & 12mm |
| 625Z-32T | 09-16 FLH/FLT Chrome 2:1 with 4.5" Straight Cut Muffler | \$1,779 | F/S | 02 Bungs |
| End-Caps NOT INCLUDED see on page 5 | | | | |
| Header Steps 2"-2 1/8"-2 1/4"-2 1/2" at Muffler | | | | |



M8 Billet Cat 2017-2018



633Z-31T	17-18	FLH/FLT	Black 4" Straight Cut Muffler Vortex Baffle	\$1,249	F/S	18mm & 12mm	2 1/2"
630N-31TG	09-18	FLH/FLT	Black 4" Ghost Pipe Straight Cut	\$459	G/P	02 Bungs	Vortex
633Z-32T	17-18	FLH/FLT	Chrome 4" Straight Cut Muffler Vortex Baffle	\$1,099	F/S		Core
630N-32TG	09-18	FLH/FLT	Chrome 4" Ghost Pipe Straight Cut	\$389	G/P		

End-Caps NOT INCLUDED see on page 5

Billet Cat 2009-2016



627Z-31T	09-16	FLH/FLT	Black 4" Straight Cut Muffler Vortex Baffle	\$1,249	F/S	18mm & 12mm	2 1/2
630N-31TG	09-18	FLH/FLT	Black 4" Ghost Pipe Straight Cut	\$459	G/P	02 Bungs	Vortex
627Z-32T	09-16	FLH/FLT	Chrome 4" Straight Cut Muffler Vortex Baffle	\$1,099	F/S		Core
630N-32TG	09-18	FLH/FLT	Chrome 4" Ghost Pipe Straight Cut	\$389	G/P		

End-Caps NOT INCLUDED see on page 5

Diablo Gato 2009-2016



631Z-31T	09-16	FLH/FLT	Black 4" Straight Cut Muffler Vortex Baffle	\$1,249	F/S	18mm & 12mm	2 1/2
630N-31TG	09-18	FLH/FLT	Black 4" Ghost Pipe Straight Cut	\$459	G/P	02 Bungs	Vortex
631Z-32T	09-16	FLH/FLT	Chrome 4" Straight Cut Muffler Vortex Baffle	\$1,099	F/S		Core
630N-32TG	09-18	FLH/FLT	Chrome 4" Ghost Pipe Straight Cut	\$389	G/P		

End-Caps NOT INCLUDED see on page 5



Boss Fat Cat 2009-2016



Ghost Pipe

556Z-31BQQ	FLH/FLT Black 4" Back Cut Louvered Wrapped	\$1,249	F/S	18mm	2 1/4"
556Z-31BQ	FLH/FLT Black 4" Back Cut Perforated Wrapped	\$1,249	F/S	&12mm	2 1/2"
556Z-31B	FLH/FLT Black 4" Back Cut Perforated	\$1,249	F/S	02 Bungs	2 1/2"
549N-31BG	FLH/FLT Black 4" Back Cut Ghost Pipe	\$459	G/P		Core
556Z-32BQQ	FLH/FLT Chrome 4" Back Cut Louvered Wrapped	\$1,099	F/S	18mm	2 1/4"
556Z-32BQ	FLH/FLT Chrome 4" Back Cut Perforated Wrapped	\$1,099	F/S	&12mm	2 1/2"
556Z-32B	FLH/FLT Chrome 4" Back Cut Perforated	\$1,099	F/S	02 Bungs	2 1/2"
549N-32BG	FLH/FLT Chrome 4" Back Cut Ghost Pipe	\$389	G/P		Core
556Z-31LQQ	FLH/FLT Black 4" Slant Cut Louvered Wrapped	\$1,249	F/S	18mm	2 1/4"
556Z-31LQ	FLH/FLT Black 4" Slant Cut Perforated Wrapped	\$1,249	F/S	&12mm	2 1/2"
556Z-31L	FLH/FLT Black 4" Slant Cut Perforated	\$1,249	F/S	02 Bungs	2 1/2"
549N-31LG	FLH/FLT Black 4" Slant Cut Ghost Pipe	\$459	G/P		Core
556Z-32LQQ	FLH/FLT Chrome 4" Slant Cut Louvered Wrapped	\$1,099	F/S	18mm	2 1/4"
556Z-32LQ	FLH/FLT Chrome 4" Slant Cut Perforated Wrapped	\$1,099	F/S	&12mm	2 1/2"
556Z-32L	FLH/FLT Chrome 4" Slant Cut Perforated	\$1,099	F/S	02 Bungs	2 1/2"
549N-32LG	FLH/FLT Chrome 4" Slant Cut Ghost Pipe	\$389	G/P		Core
556Z-31TQQ	FLH/FLT Black 4" Straight Cut Louvered Wrapped	\$1,249	F/S	18mm	2 1/4"
556Z-31TQ	FLH/FLT Black 4" Straight Cut Perforated Wrapped	\$1,249	F/S	&12mm	2 1/2"
556Z-31T	FLH/FLT Black 4" Straight Cut Perforated	\$1,249	F/S	02 Bungs	2 1/2"
549N-31TG	FLH/FLT Black 4" Straight Cut Ghost Pipe	\$459	G/P		Core
556Z-32TQQ	FLH/FLT Chrome 4" Straight Cut Louvered Wrapped	\$1,099	F/S	18mm	2 1/4"
556Z-32TQ	FLH/FLT Chrome 4" Straight Cut Perforated Wrapped	\$1,099	F/S	&12mm	2 1/2"
556Z-32T	FLH/FLT Chrome 4" Straight Cut Perforated	\$1,099	F/S	02 Bungs	2 1/2"
549N-32TG	FLH/FLT Chrome 4" Straight Cut Ghost Pipe	\$389	G/P		Core

Fat Cat 1995-2008



502N-31B	FLH/FLT Black 4" Back Cut Louvered	\$1,149	F/S	18mm	2 1/4"
502N-31BBQ	FLH/FLT Black 4" Back Cut Perforated Wrapped	\$1,149	F/S	02 Bungs	2 1/2"
502-31BG	07-08 FLH/FLT Black 4" Back Cut Ghost Pipe	\$459	G/P		Core
506-31BG	95-06 FLH/FLT Black 4" Back Cut Ghost Pipe	\$459	G/P		
502N-32B	FLH/FLT Chrome 4" Back Cut Louvered	\$999	F/S	18mm	2 1/4"
502N-32BBQ	FLH/FLT Chrome 4" Back Cut Perforated Wrapped	\$999	F/S	02 Bungs	2 1/2"
502-32BG	07-08 FLH/FLT Chrome 4" Back Cut Ghost Pipe	\$389	G/P		Core
506-32BG	95-06 FLH/FLT Chrome 4" Back Cut Ghost Pipe	\$389	G/P		
502N-31L	FLH/FLT Black 4" Slant Cut Louvered	\$1,149	F/S	18mm	2 1/4"
502N-31LBQ	FLH/FLT Black 4" Slant Cut Perforated Wrapped	\$1,149	F/S	02 Bungs	2 1/2"
502-31LG	07-08 FLH/FLT Black 4" Slant Cut Ghost Pipe	\$459	G/P		Core
506-31LG	95-06 FLH/FLT Black 4" Slant Cut Ghost Pipe	\$459	G/P		
502N-32L	FLH/FLT Chrome 4" Slant Cut Louvered	\$999	F/S	18mm	2 1/4"
502N-32LBQ	FLH/FLT Chrome 4" Slant Cut Perforated Wrapped	\$999	F/S	02 Bungs	2 1/2"
502-32LG	07-08 FLH/FLT Chrome 4" Slant Cut Ghost Pipe	\$389	G/P		Core
506-32LG	95-06 FLH/FLT Chrome 4" Slant Cut Ghost Pipe	\$389	G/P		
502N-31T	FLH/FLT Black 4" Straight Cut Louvered	\$1,149	F/S	18mm	2 1/4"
502N-31TBQ	FLH/FLT Black 4" Straight Cut Perforated Wrapped	\$1,149	F/S	02 Bungs	2 1/2"
502-31TG	07-08 FLH/FLT Black 4" Straight Cut Ghost Pipe	\$459	G/P		Core
506-31TG	95-06 FLH/FLT Black 4" Straight Cut Ghost Pipe	\$459	G/P		
502N-32T	FLH/FLT Chrome 4" Straight Cut Louvered	\$999	F/S	18mm	2 1/4"
502N-32TBQ	FLH/FLT Chrome 4" Straight Cut Perforated Wrapped	\$999	F/S	02 Bungs	2 1/2"
502-32TG	07-08 FLH/FLT Chrome 4" Straight Cut Ghost Pipe	\$389	G/P		Core
506-32TG	95-06 FLH/FLT Chrome 4" Straight Cut Ghost Pipe	\$389	G/P		



Boss Boarzilla 2009-2016



566Z-31BQ	FLH/FLT Black 4" Back Cut Perforated Wrapped	\$1,299	F/S	18mm	2 1/2"
566Z-31B	FLH/FLT Black 4" Back Cut Perforated	\$1,299	F/S	&12mm	2 1/2"
549N-31BG	FLH/FLT Black 4" Back Cut Ghost Pipe	\$459	G/P	02 Bungs	Core
566Z-32BQ	FLH/FLT Chrome 4" Back Cut Perforated Wrapped	\$1,149	F/S	18mm	2 1/2"
566Z-32B	FLH/FLT Chrome 4" Back Cut Perforated	\$1,149	F/S	&12mm	2 1/2"
549N-32BG	FLH/FLT Chrome 4" Back Cut Ghost Pipe	\$389	G/P	02 Bungs	Core
566Z-31LQ	FLH/FLT Black 4" Slant Cut Perforated Wrapped	\$1,299	F/S	18mm	2 1/2"
566Z-31L	FLH/FLT Black 4" Slant Cut Perforated	\$1,299	F/S	&12mm	2 1/2"
549N-31LG	FLH/FLT Black 4" Slant Cut Ghost Pipe	\$459	G/P	02 Bungs	Core
566Z-32LQ	FLH/FLT Chrome 4" Slant Cut Perforated Wrapped	\$1,149	F/S	18mm	2 1/2"
566Z-32L	FLH/FLT Chrome 4" Slant Cut Perforated	\$1,149	F/S	&12mm	2 1/2"
549N-32LG	FLH/FLT Chrome 4" Slant Cut Ghost Pipe	\$389	G/P	02 Bungs	Core
566Z-31TQ	FLH/FLT Black 4" Straight Cut Perforated Wrapped	\$1,299	F/S	18mm	2 1/2"
566Z-31T	FLH/FLT Black 4" Straight Cut Perforated	\$1,299	F/S	&12mm	2 1/2"
549N-31TG	FLH/FLT Black 4" Straight Cut Ghost Pipe	\$459	G/P	02 Bungs	Core
566Z-32TQ	FLH/FLT Chrome 4" Straight Cut Perforated Wrapped	\$1,149	F/S	18mm	2 1/2"
566Z-32T	FLH/FLT Chrome 4" Straight Cut Perforated	\$1,149	F/S	&12mm	2 1/2"
549N-32TG	FLH/FLT Chrome 4" Straight Cut Ghost Pipe	\$389	G/P	02 Bungs	Core

Boarzilla 1995-2008



503N-31B	FLH/FLT Black 4" Back Cut Perforated	\$1,249	F/S	18mm	2 1/2"
503N-31BQ	FLH/FLT Black 4" Back Cut Perforated Wrapped	\$1,249	F/S	02 Bungs	2 1/2"
503-31BG	07-08 FLH/FLT Black 4" Back Cut Ghost Pipe	\$459	G/P		Core
507-31BG	95-06 FLH/FLT Black 4" Back Cut Ghost Pipe	\$459	G/P		
503N-32B	FLH/FLT Chrome 4" Back Cut Perforated	\$1,099	F/S	18mm	2 1/2"
503N-32BQ	FLH/FLT Chrome 4" Back Cut Perforated Wrapped	\$1,099	F/S	02 Bungs	2 1/2"
503-32BG	07-08 FLH/FLT Chrome 4" Back Cut Ghost Pipe	\$389	G/P		Core
507-32BG	95-06 FLH/FLT Chrome 4" Back Cut Ghost Pipe	\$389	G/P		
503N-31L	FLH/FLT Black 4" Slant Cut Perforated	\$1,249	F/S	18mm	2 1/2"
503N-31LQ	FLH/FLT Black 4" Slant Cut Perforated Wrapped	\$1,249	F/S	02 Bungs	2 1/2"
503-31LG	07-08 FLH/FLT Black 4" Slant Cut Ghost Pipe	\$459	G/P		Core
507-31LG	95-06 FLH/FLT Black 4" Slant Cut Ghost Pipe	\$459	G/P		
503N-32L	FLH/FLT Chrome 4" Slant Cut Perforated	\$1,099	F/S	18mm	2 1/2"
503N-32LQ	FLH/FLT Chrome 4" Slant Cut Perforated Wrapped	\$1,099	F/S	02 Bungs	2 1/2"
503-32LG	07-08 FLH/FLT Chrome 4" Slant Cut Ghost Pipe	\$389	G/P		Core
507-32LG	95-06 FLH/FLT Chrome 4" Slant Cut Ghost Pipe	\$389	G/P		
503N-31T	FLH/FLT Black 4" Straight Cut Perforated	\$1,249	F/S	18mm	2 1/2"
503N-31TQ	FLH/FLT Black 4" Straight Cut Perforated Wrapped	\$1,249	F/S	02 Bungs	2 1/2"
503-31TG	07-08 FLH/FLT Black 4" Straight Cut Ghost Pipe	\$459	G/P		Core
507-31TG	95-06 FLH/FLT Black 4" Straight Cut Ghost Pipe	\$459	G/P		
503N-32T	FLH/FLT Chrome 4" Straight Cut Perforated	\$1,099	F/S	18mm	2 1/2"
503N-32TQ	FLH/FLT Chrome 4" Straight Cut Perforated Wrapped	\$1,099	F/S	02 Bungs	2 1/2"
503-32TG	07-08 FLH/FLT Chrome 4" Straight Cut Ghost Pipe	\$389	G/P		Core
507-32TG	95-06 FLH/FLT Chrome 4" Straight Cut Ghost Pipe	\$389	G/P		



New M8 Softail Fat Cat 2018



634Z-31B	2:1 Straight Black Back Cut with Louvered Baffle	\$1,099	F/S	18mm &12mm
634Z-32B	2:1 Straight Chrome Back Cut with Louvered Baffle	\$949	F/S	Bungs
Fits	Heritage Classic-Sport Glide-Deluxe-Fat Bob- Slim Low Rider-Street Bob			
638Z-31B	2:1 Straight Black Back Cut with Louvered Baffle	\$1,099	F/S	18mm &12mm
638Z-32B	2:1 Straight Chrome Back Cut with Louvered Baffle	\$949	F/S	Bungs
Fits	Wide Tire Breakout-Fat Boy			

New M8 Softail Low Cat 2018



635Z-31B	2:1 Black Up-Swept with Louvered Baffle	\$1,099	F/S	18mm &12mm
635Z-32B	2:1 Chrome Up-Swept with Louvered Baffle	\$949	F/S	Bungs
Fits	Heritage Classic-Sport Glide-Deluxe-Fat Bob- Slim Low Rider-Street Bob			
639Z-31B	2:1 Black Up-Swept with Louvered Baffle	\$1,099	F/S	18mm &12mm
639Z-32B	2:1 Chrome Up-Swept with Louvered Baffle	\$949	F/S	Bungs
Fits	Wide Tire Breakout-Fat Boy			

New M8 Softtail Bob Cat 2018



<p>636Z-31A 636Z-31B 636Z-31C 636Z-32A 636Z-32B 636Z-32C</p>	<p>2:1 Black Up-Swept with Perforated Baffle A— High Polished looks like Chrome, B—Black C— Carbon Fiber 2:1 Chrome Up-Swept with Perforated Baffle A— High Polished looks like Chrome, B—Black C— Carbon Fiber</p>	<p>\$1,099 F/S 18mm &12mm F/S Bungs \$949</p>
<p>Fits Heritage Classic-Sport Glide-Deluxe-Fat Bob– Slim Low Rider-Street Bob</p>		

<p>640Z-31A 640Z-31B 640Z-31C 640Z-32A 640Z-32B 640Z-32C</p>	<p>2:1 Black Up-Swept with Perforated Baffle A— High Polished looks like Chrome, B—Black C— Carbon Fiber 2:1 Chrome Up-Swept with Perforated Baffle A— High Polished looks like Chrome, B—Black C— Carbon Fiber</p>	<p>\$1,099 F/S 18mm &12mm F/S Bungs \$949</p>
<p>Fits Wide Tire Breakout-Fat Boy</p>		

New M8 Softtail Abuelo Cat 2018



<p>637Z-31M 637Z-32M</p>	<p>2:1 Black Up-Swept with Louvered Wrapped Baffle 2:1 Chrome Up-Swept with Louvered Wrapped Baffle</p>	<p>\$1,099 F/S 18mm &12mm \$949 F/S Bungs</p>
<p>Fits Heritage Classic-Sport Glide-Deluxe-Fat Bob– Slim Low Rider-Street Bob</p>		
<p>641Z-31M 641Z-32M</p>	<p>2:1 Black Up-Swept with Louvered Wrapped Baffle 2:1 Chrome Up-Swept with Louvered Wrapped Baffle</p>	<p>\$1,099 F/S 18mm &12mm \$949 F/S Bungs</p>
<p>Fits Wide Tire Breakout-Fat Boy</p>		



Softail Fat Cat 1984-2017



579Z-31F

2:1 Black 45 Degree Cut with Louvered Baffle

\$949

579Z-31FBQ

2:1 Black 45 Degree Cut with Perforated Wrapped

\$949

F/S 18mm &12mm

579Z-32F

2:1 Chrome 45 Degree Cut with Louvered Baffle

\$799

Bungs

579Z-32FBQ

2:1 Chrome 45 Degree Cut with Perforated Wrapped

\$799

Heritage Softail Fat Cat 1984-2017



580Z-31B

2:1 Black Back Cut with Louvered Baffle

\$949

580Z-31BBQ

2:1 Chrome Back Cut with Perforated Wrapped

\$949

F/S 18mm &12mm

580Z-32B

2:1 Black Back Cut with Louvered Baffle

\$799

Bungs

580Z-32BBQ

2:1 Chrome Back Cut with Perforated Wrapped

\$799

Softail Low Cat and Bob Cat 1984-2017



577Z



610Z

577Z-31F	2:1 Black 45 Degree Cut with Louvered Baffle	\$949	
577Z-31FBQ	2:1 Black 45 Degree Cut with Perforated Wrapped	\$949	F/S 18mm &12mm
577Z-32F	2:1 Chrome 45 Degree Cut with Louvered Baffle	\$799	Bungs
577Z-32FBQ	2:1 Chrome 45 Degree Cut with Perforated Wrapped	\$799	

Low Cat for Breakout

610Z-31F	2:1 Black 45 Degree Cut with Louvered Wrapped	\$949	F/S 18mm &12mm
610Z-32F	2:1 Black 45 Degree Cut with Perforated Wrapped	\$799	Bungs



578Z



611Z

578Z-31A	2:1 Black Up-Swept with Perforated Baffle	\$1,049	
578Z-31B	A— High Polished looks like Chrome, B—Black		F/S 18mm &12mm
578Z-31C	C— Carbon Fiber		Bungs
578Z-32A	2:1 Chrome Up-Swept with Perforated Baffle	\$899	
578Z-32B	A— High Polished looks like Chrome, B—Black		
578Z-32C	C— Carbon Fiber		

Bob Cat for Breakout

611Z-31A	2:1 Black Up-Swept with Perforated Baffle	\$1,049	
611Z-31B	A— High Polished looks like Chrome, B—Black		F/S 18mm &12mm
611Z-31C	C— Carbon Fiber		Bungs
611Z-32A	2:1 Chrome Up-Swept with Perforated Baffle	\$899	
611Z-32B	A— High Polished looks like Chrome, B—Black		
611Z-32C	C— Carbon Fiber		



Softail Boarzilla 1984-2017



576Z-31F

2:1 Black 45 Degree Cut with Perforated Baffle

\$1,149

576Z-31FQ

2:1 Black 45 Degree Cut with Perforated Wrapped

\$1,149

F/S

18mm & 12mm

2 1/2"

576Z-32F

2:1 Chrome 45 Degree Cut with Perforated Baffle

\$999

Bungs

Core

576Z-32FQ

2:1 Chrome 45 Degree Cut with Perforated Wrapped

\$999

Does Not Work with Bags

Dyna Fat Cat



448-31F	89-00	2:1 Black Louvered Baffle	\$949			
448-31FQ		2:1 Black Louvered Wrapped Baffle	\$949	F/S		2 1/4"
448-32F		2:1 Chrome Louvered Baffle	\$799			Core
448-32FQ		2:1 Chrome Louvered Wrapped baffle	\$799			
<i>Will fit 87-88 but you have to make spacers to mount the trans bracket.</i>						
525-31F		2:1 Black Louvered Baffle	\$949	F/S		2 1/4"
525-31FBQ	95-05	2:1 Black Perforated Wrapped Baffle	\$949		18mm	2 1/2"
525-32F		2:1 Chrome Louvered Baffle	\$799		Bungs	2 1/4"
525-32FBQ		2:1 Chrome Perforated Wrapped baffle	\$799			2 1/2"
582Z-31F		2:1 Black Louvered Baffle	\$949	F/S		2 1/4"
582Z-31FBQ	06-17	2:1 Black Perforated Wrapped Baffle	\$949		18mm & 12mm	2 1/2"
582Z-32F		2:1 Chrome Louvered Baffle	\$799		Bungs	2 1/4"
582Z-32FBQ		2:1 Chrome Perforated Wrapped baffle	\$799			2 1/2"





Dyna Bob Cat 2006-2017



592Z-31A
592Z-31B
592Z-31C
592Z-32A
592Z-32B
592Z-32C

2:1 Black Up-Swept with Perforated Baffle
A— High Polished looks like Chrome, B—Black
C— Carbon Fiber
2:1 Chrome Up-Swept with Perforated Baffle
A— High Polished looks like Chrome, B—Black
C— Carbon Fiber

\$999

\$879

F/S 18mm & 12mm
2”
Core
Bung

Dyna Boarzilla



526-31F		2:1 Black 45 Degree Cut with Perforated Baffle	\$1,149			2 1/2"
526-31FQ	95-05	2:1 Black 45 Degree Cut with Perforated Wrapped	\$1,149	F/S	18mm	Core
526-32F		2:1 Chrome 45 Degree Cut with Perforated Baffle	\$999		Bung	
526-32FQ		2:1 Chrome 45 Degree Cut with Perforated Wrapped	\$999			
581Z-31F		2:1 Black 45 Degree Cut with Perforated Baffle	\$1,149			2 1/2"
581Z-31FQ	06-17	2:1 Black 45 Degree Cut with Perforated Wrapped	\$1,149	F/S	18mm & 12mm	Core
581Z-32F		2:1 Chrome 45 Degree Cut with Perforated Baffle	\$999		Bung	
581Z-32FQ		2:1 Chrome 45 Degree Cut with Perforated Wrapped	\$999			



V-Rod



612ZSE-31F	06	2:1 Black 45 Degree Louvered Wrapped	\$999	F/S	497 Bracket	2 1/4
612ZSE-32F		2:1 Chrome 45 Degree Louvered Wrapped	\$849		12mm & 18mm	Core
612ZS-31F	07-17	2:1 Black 45 Degree Louvered Wrapped	\$999	F/S	12mm & 18mm	2 1/4
612ZS-32F		2:1 Chrome 45 Degree Louvered Wrapped	\$849		Bungs	Core
612ZM-31F	07-17	2:1 Black 45 Degree Louvered Wrapped	\$999	F/S	12mm & 18mm	2 1/4
612ZM-32F		2:1 Chrome 45 Degree Louvered Wrapped	\$849		Bungs	Core

No Other Baffle

**Will not fit with Mid-Controls. Hits Brake Lever/
Pedal**

Sportster 2004-2018



- 615Z-31A
- 615Z-31B
- 615Z-31C
- 615Z-32A
- 615Z-32B
- 615Z-32C

- 2:1 Black Up-Swept with Perforated Baffle
- A— High Polished looks like Chrome, B—Black
- C— Carbon Fiber
- 2:1 Chrome Up-Swept with Perforated Baffle
- A— High Polished looks like Chrome, B—Black
- C— Carbon Fiber

\$999

F/S 18mm & 12mm
Bung

2"
Core

\$879



Street 500-750



629-11B

Black Slip-on Muffler with Perforated Baffle

\$449

S/O Use Stock

2"

629-11C

Black Carbon Slip-on Muffler with Perforated Baffle

\$449

S/O Mounting Bracket

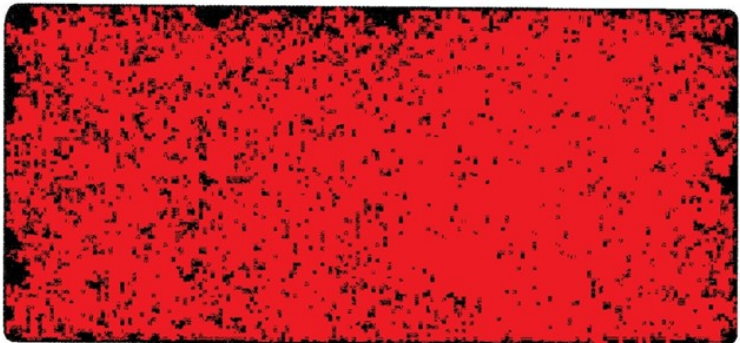
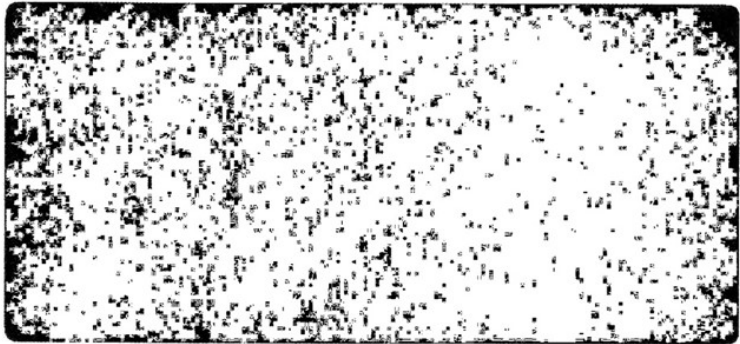
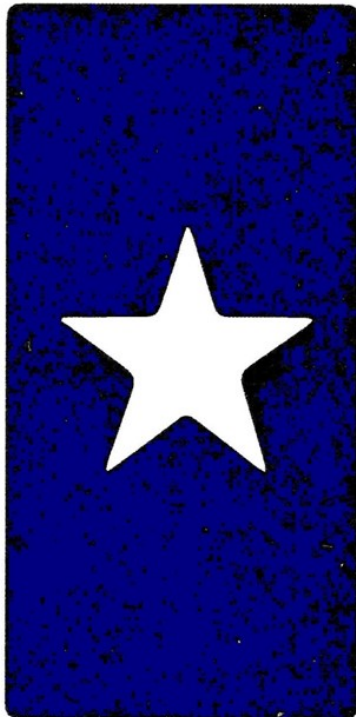
Core

Notes



Prices May Change at Anytime

MADE IN



TEXAS

USA