



INSTALLATION

DRIVING LIGHTS for FLHT/FLHR 5029

PARTS INCLUDED

- 1 Right Driving Light Assembly—Black
- 1 Left Driving Light Assembly—Black
- 1 Right Driving Light Bracket—Black
- 1 Left Driving Light Bracket—Black
- 4 Driving Light Plugs—Black
- 1 Hardware Kit Including:
 - 4 5/16"-18 Hex Jam Nuts
 - 4 5/16" Flat Washers
 - 2 1/4"-20 x 3/4" Socket Head Cap Screws (SHCS)
 - 2 1/4" Narrow Flat Washers
 - 4 Driving Light Spacers
 - 4 5/16"-18 x 1" Socket Button Head Cap Screws (SBHCS)
 - 4 5/16"-24 x 1" Socket Button Head Cap Screws (SBHCS)
- 1 Wiring Components Kit Including:
 - 1 Double Rocker Switch
 - 6 6" Cable Ties
 - 1 24" Power Y 16 AWG Wire Assembly (White)
 - 2 24" 16 AWG Wire (White)
 - 2 24" 16 AWG Wire (Yellow)
 - 8 Heat Shrink Butt Connectors
- 1 All Purpose Lighting Installation Kit Including:
 - 1 Dielectric Grease Pack
 - 6 Female T-Tap Connectors
 - 6 Male Spade Connectors
 - 4 Insulated Bullet Receptacles
 - 4 Insulated Bullet Connectors
 - 2 3 Terminal AMP Socket Connectors
 - 2 Large White 4 Pin AMP Connector Housings
 - 2 AMP 6 Circuit Plugs
 - 1 .070 Tab
 - 1 .070 Receptacle
 - 6 6" Cable Ties
- 1 Installation Instructions

Note: Not all parts will be used in the installation of this product.

Please read and understand entire instructions before starting installation.

THANK YOU FOR CHOOSING KÜRYAKYN!

IN ORDER TO PROTECT YOU AND OTHERS FROM POSSIBLE INJURY AND/OR PROPERTY DAMAGE OR LOSS, PLEASE PAY CLOSE ATTENTION TO ALL INSTRUCTIONS, WARNINGS, CAUTIONS AND ATTENTION NOTES REGARDING THE USE AND CARE OF THIS PRODUCT.

WARNING! THIS INDICATION ALERTS YOU TO THE FACT THAT IGNORING THE CONTENTS DESCRIBED HEREIN CAN RESULT IN POTENTIAL DEATH OR SERIOUS INJURY.

ATTENTION! This indication alerts you to the fact that ignoring the contents described herein may negatively affect product performance and functionality.

CAUTION! This indication alerts you to the fact that ignoring the contents described herein can result in potential injury or material damage.

CUSTOMER SERVICE

877.370.3604 (toll free)

INSTALLATION QUESTIONS

techsupport@kuryakyn.com
or call 715.247.2983

LIMITED WARRANTY

Kuryakyn warrants that any Kuryakyn products sold hereunder, shall be free of defects in materials and workmanship for a period of one (1) year from the date of purchase by the consumer excepting the following provisions:

- Kuryakyn shall have no obligation in the event the customer is unable to provide a receipt showing the date the customer purchased the product(s).
 - The product must be properly installed, maintained and operated under normal conditions.
 - Kuryakyn makes no warranty, expressed or implied, with respect to any gold plated products.
 - Kuryakyn shall not be liable for any consequential and incidental damages, including labor and paint, resulting from failure of a Kuryakyn product, failure to deliver, delay in delivery, delivery in nonconforming condition, or for any breach of contract or duty between Kuryakyn and a customer.
- Kuryakyn products are often intended for use in specific applications. Kuryakyn makes no warranty if a Kuryakyn product is used in applications other than intended.
- Kuryakyn electrical products are warranted for one (1) year from the date of purchase by the consumer. L.E.D.'S contained in components of Kuryakyn products will be warranted for defects in materials and workmanship for 3 years from the date of purchase where as all other components shall be warranted for one(1) year. This includes, but is not limited to; control modules, wiring, chrome & other components.

• Kuryakyn makes no warranty of any kind in regard to other manufacturer's products distributed by Kuryakyn. Kuryakyn will pass on all warranties made by the manufacturer and where possible, will expedite the claim on behalf of the customer, but ultimately, responsibility for disposition of the warranty claim lies with the manufacturer.

ABOUT OUR CATALOG

For purchasing Kuryakyn® products, you can receive a complete catalog free of charge. Send the Proof-of-Purchase below with your address to: Kuryakyn, P.O. Box 339, Somerset, WI 54025. Please indicate either Accessories Catalog for Harley-Davidson® or GL & Metric Cruisers.

Be sure to ask your local dealer about other Kuryakyn® products, the motorcycle parts and accessories designed for riders by riders.

©2005 Kuryakyn USA® All Rights reserved.



kuryakyn.com

TOOLS SUGGESTED

Set of Hex Wrenches, Set of Torx Wrenches, Screwdrivers, Small Pick, Vise Grips, Set of Combination Wrenches, Socket Set and Ratchet, Wire Strippers.

STRICTLY OBSERVE THE FOLLOWING GUIDELINES IN ORDER TO USE THE PRODUCT PROPERLY AND AVOID POTENTIALLY DANGEROUS ACCIDENTS.

NOTE: There are two different mounting procedures, please refer to the appropriate sections for your model of motorcycle.

NOTE: Pictures shown are of chrome parts. Installation of Black parts will be the same.

For All Models

STEP 1 Read and understand all steps in the instructions before starting the installation. Park the motorcycle on a hard, level surface and turn off the ignition. Let cool.

WARNING! YOU WILL BE WORKING AROUND THE ENGINE AND EXHAUST SYSTEM DURING INSTALLATION. ENSURE THAT THE ENGINE AND EXHAUST SYSTEM HAVE FULLY COOLED TO PREVENT INJURY.

ATTENTION! A factory service manual for your model will be needed in performing this installation. There are specific procedures outlined in the service manual that need to be followed to complete this installation. Do not attempt to perform this installation with out a service manual or if you are not confident in your ability to complete all of the steps in the procedure; consult a trained technician.

CAUTION! Avoid potential electrical shock! Disconnect the battery before starting this procedure.

For Electra Glide and Street Glide Models

STEP 2 Remove the outer fairing and windscreen as described in the service manual. Unplug the headlight connector and gently set the outer fairing on a soft, sturdy surface.

CAUTION! Avoid damage to the motorcycle. Protect painted surfaces with a soft cloth or blanket.

ATTENTION! Assistance is recommended to secure the outer fairing after all of the Torx screws have been removed to prevent damage.

STEP 3 Locate and separate the right and left turn signal connectors. The connectors are located inside the fairing usually near the speakers. PIC 1 There will be one violet wire, one blue wire and one black wire coming out of the connector.

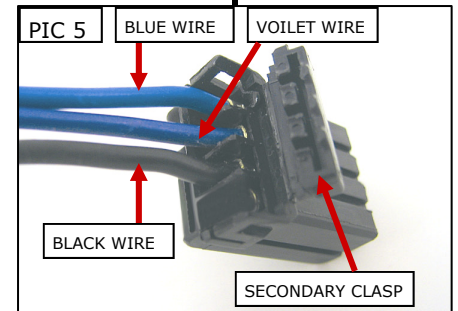
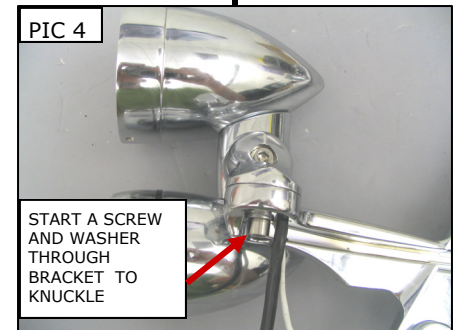
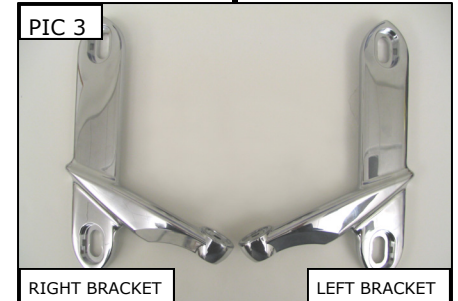
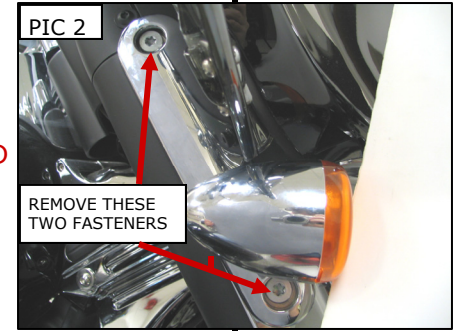
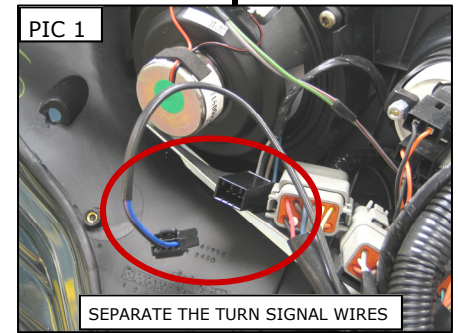
STEP 4 Remove the screws securing the right turn signal bracket from the motorcycle as shown in PIC 2 and remove the bracket.

STEP 5 Refer to PIC 3 to determine the right driving light bracket; route the wires through the notch.

STEP 6 Place the knuckle on the bracket and start a 1/4"-20 x 3/4" SHCS screw and a 1/4" flat washer as shown in PIC 4.

STEP 7 Insert the terminal sockets on the blue, violet and black wires into the 4-circuit plug from the hardware kit, refer to PIC 5 for the location of the wires; close the secondary clasp once the wires have been inserted.

-cont.-



STEP 8 Determine whether 5/16"-18 x 1" (coarse) or 5/16"-24 x 1" (fine) SBHCS screws are needed to mount the brackets to the motorcycle; mount the brackets to the motorcycle and secure with the proper screws and 5/16" flat washers as shown in PIC 6.

ATTENTION! Küryakyn recommends the use of dielectric grease on electrical connections.

STEP 9 Route the wires through the channel in the light bracket and into the fairing as shown in PIC 7. Connect the right turn signal harness from the light to the OEM harness.

STEP 10 Repeat **STEP 3** through **STEP 9** for the left side.

Installing the Switch

STEP 11 Remove the ignition switch key lock as described in the service manual.

STEP 12 Remove the nut, metal collar and plastic spacer that are located below the ignition knob as shown in PIC 8. Lightly lift up on the switch position plate to disengage the tabs and remove the plate. PIC 8 Remove the screws (PIC 9) on the sides of the fairing cap and set them aside for now. Gently remove the fairing cap from the motorcycle.

STEP 13 Determine which empty auxiliary switch location you wish to mount the switch for the lights. Remove the two screws securing the bracket on the backside of the fairing cap, where you choose to install the switch. PIC 10

STEP 14 With the bracket removed, gently pry on the metal tabs that secure the blank cover you choose to remove. PIC 11 Install the included double rocker switch to this location on the bracket. Reinstall the bracket to the fairing cap.

STEP 15 Locate the two 24" yellow wires and two 24" white wires from the hardware kit. Referring to PIC 12, connect the female spade ends of the yellow and white wires to the double rocker switch. Decide which side of the Double Rocker switch that you would like to use to operate the Driving Lights and mark the wires from that side of the switch as the ones to continue with.

NOTE: If you are not going to use the second set of yellow and white wires at this time, wrap the ends of the wires in electrical tape and mark them for future use.

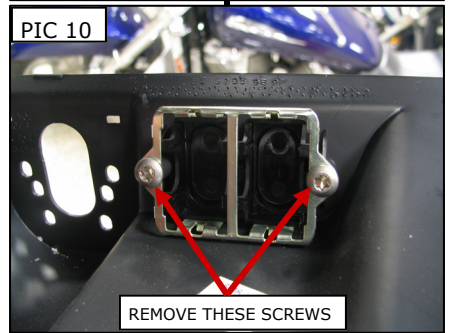
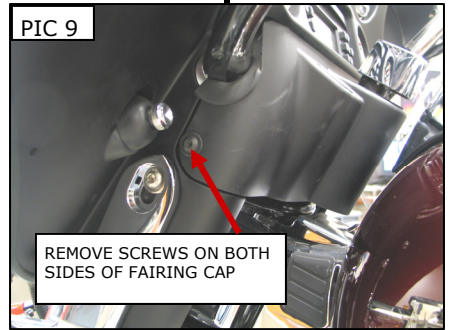
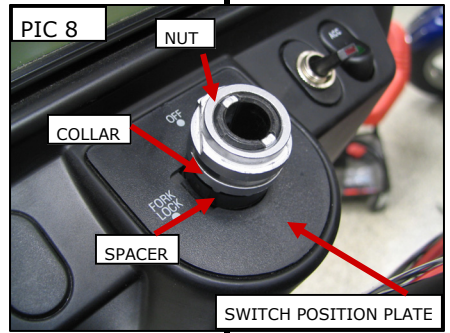
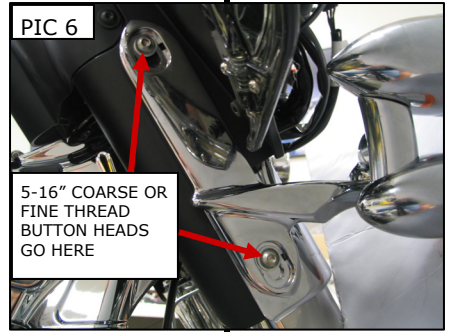
STEP 16 Reinstall the fairing cap while routing all four wires from the switch out towards the front of the fairing. Reinstall the fairing cap with the OEM hardware.

STEP 17 Reinstall the switch position plate, plastic spacer; metal collar and nut. PIC 8 Tighten the nut to secure the spacer and collar. Be careful not to over tighten it.

STEP 18 Reinstall the ignition switch key lock as described in the service manual. Turn the key knob to the "off" position ensuring that the knob turns properly.

STEP 19 Place a small amount of dielectric grease on the male spades of the yellow wire and white wire and insert the yellow wire into the orange accessory wire off the headlight plug. PIC 14 Using the included white Y wire, connect the single spade end to the white wire from the switch. Connect each of the other ends of the Y wire to each of the white wires from the Driving Lights.

STEP 20 Reconnect the battery and turn the ignition on and check to make sure that the running lights function and the turn signals operate.



STEP 21 Flip the switch for the driving lights, ensuring that both are operating properly. If the Double Rocker Switch does not operate in the desired direction, you may connect the white Y wire from the Driving Lights into the yellow wire and connect the white wire from the switch to the orange accessory wire from the headlight. This will reverse the ON and OFF position of the switch.

STEP 22 Reconnect the headlight. Reinstall the outer fairing and the windscreen.

STEP 23 Adjust the driving lights to the desired angle/position by loosening and retightening the screws that secure the lights to the brackets. Snap the driving light plugs into the holes on the side of the driving light brackets as shown in PIC 15.

ATTENTION! It is the installer's responsibility to ensure that all of the fasteners (including pre-assembled) are tightened before operation of the motorcycle. Küryakyn will not warranty components lost due to improper installation. Periodic maintenance may be required.



Procedure for Road King Models

NOTE: This procedure will allow you to reuse the OEM driving light switch.

STEP 2 Remove the headlight from the motorcycle as described in the service manual. Set the headlight and hardware aside, they will be reused.

STEP 3 Disconnect the turn signal wiring harness (2 blue, 2 violet and 2 black wires) and the driving light harness (2 grey wires) as shown in PIC 15.

STEP 4 Remove the acorn nuts securing the driving light bar and carefully remove the light bar from the motorcycle.

NOTE: It may be helpful to have assistance to remove the light bar.

STEP 5 Refer to PIC 3 to determine the right driving light bracket; place the knuckle on the bracket and start a 1/4"-20 x 3/4" SHCS screw and a 1/4" flat washer as shown in PIC 4. Route the wires through the notch. PIC 7

STEP 6 Repeat for the left side.

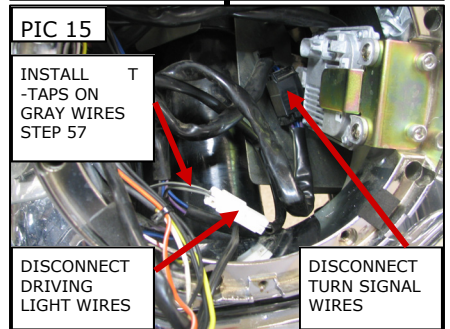
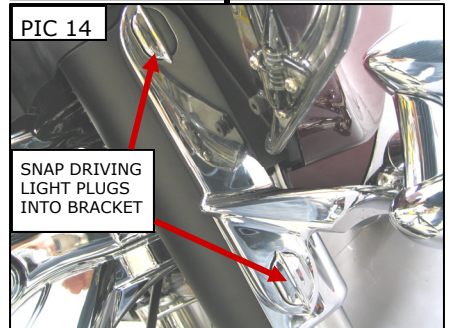
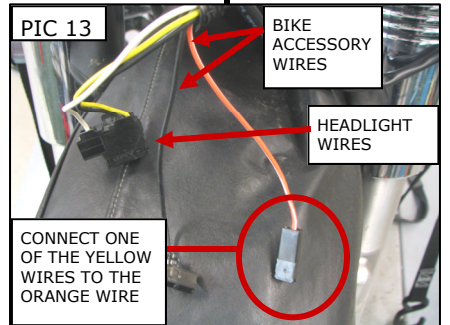
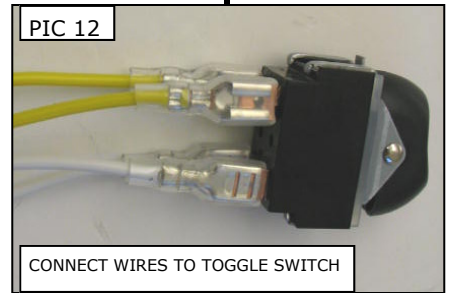
STEP 7 Mount the light brackets on the sides of the forks and secure with 5/16"-18 hex jam nuts and 5/16" flat washers from the hardware kit.

NOTE: If the stud protrudes out of the mounting bracket, install the included spacers between the mounting bracket and the forks.

STEP 8 Insert the terminal sockets on the blue, violet and black wires into the 6-circuit plug from the hardware kit, working from each outside edge, insert a black wire, then violet, and then a blue wire, refer to PIC 16 for the location of the wires; close the secondary clasp once the wires have been fully inserted. Route the wires from the lights along the fork, under the front cover and up into the headlight housing area.

ATTENTION! Secure all wiring away from any moving parts, pinch points or extreme heat. Küryakyn WILL NOT warranty any electrical component that fails due to pinched, crimped, broken, abraded, melted or frayed wires.

STEP 9 Place the a Female T-Tap connector over each of the grey driving light wires inside the headlight housing (PIC 16) and close them ensuring that the tab is engaged. PIC 17.



-cont.-

ATTENTION! Kuryakyn recommends the use of dielectric grease on electrical connections.

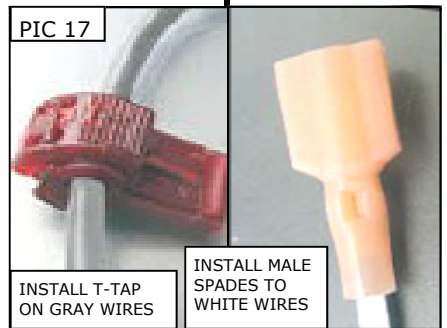
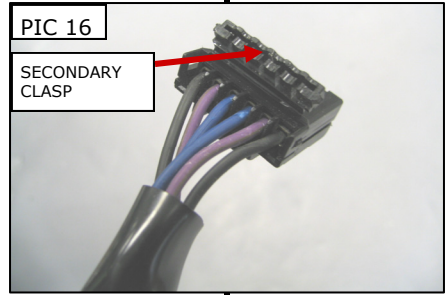
STEP 10 Insert each of the white wires from the driving lights into a Male Spade and crimp the connector to secure the wire as shown in PIC 17. Install them on the Female T-Taps that were installed on the grey wires.

STEP 11 Connect the turn signal harness to the harness inside the headlight housing that was disconnected in **STEP 49**. Secure the excess wires in the housing with the included cable ties.

STEP 12 Reinstall the headlight in the housing as described in the service manual.

STEP 13 Adjust the driving lights to the desired angle/position by loosening and retightening the screws that secure the lights to the brackets.

STEP 14 Snap the driving light plugs into the holes on the side of the driving light brackets. PIC 14



REPLACING THE LIGHT BULB

STEP 1 As shown in PIC 18, remove the Button Head Cap Screw located at the bottom of the light housing.

STEP 2 Remove the light bezel by twisting the bezel counter clockwise and pulling the bezel outward.

STEP 3 Remove the rubber inner seal from the chrome light housing. The glass light housing should now be free.

NOTE Please note the orientation of the locating ring. This will greatly help when reassembling the lights. PIC 20.

STEP 4 Pull the glass housing out away from the chrome housing and disconnect the wires PIC 19.

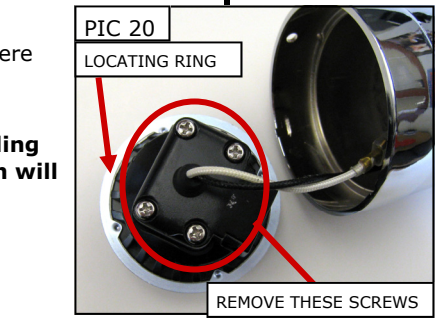
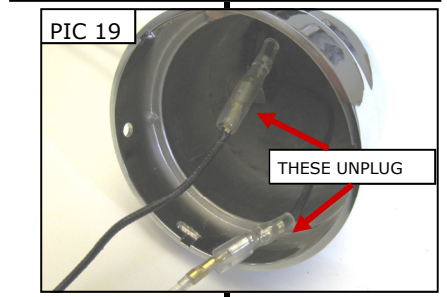
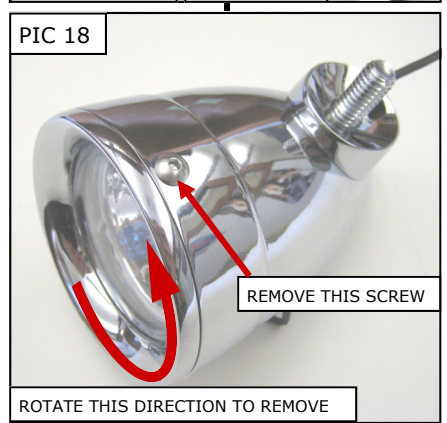
STEP 5 As shown in PIC 20, remove the 4 screws to gain access to the light bulb.

STEP 6 Pull the light bulb from the mount with the white wire attached.

STEP 7 Take the new light and insert the white wire through the mount from the front side. (The wire should fit through the rubber boot on the backside of the mount). Do not handle the new bulb with your bare hands. Oil from your fingers will stay on the bulb and create a hot spot, shortening the life of the bulb. If you do touch the bulb, clean it with an ammonia based cleaner, such as window cleaner or with alcohol before installation.

STEP 8 Reassemble the glass housing and the chrome housing in the reverse order they were disassembled.

ATTENTION! It is the installer's responsibility to ensure that all of the fasteners (including preassembled) are tightened before operation of the motorcycle. Kuryakyn will not warranty components lost due to improper installation.



Ride On!

Ride On!